

# FINAL PROGRAM/PROGRAMME FINAL

June 18-21, 2006  
Du 18 au 21 juin 2006

## GEOTEC event2006

Ottawa Congress Centre  
Centre des congrès d'Ottawa  
Ottawa Canada

CELEBRATING HISTORY AND INNOVATION  
CÉLÉBRONS L'HISTOIRE ET L'INNOVATION



This conference is sponsored and supported by GeoTec Media, publisher of GeoWorld magazine and developer of the GeoPlace.com Web portal.

Cette conférence est parrainée et appuyée par GeoTec Media, éditeur du magazine GeoWorld et concepteur du portail Web GeoPlace.com.

Rendering provided by the City of Ottawa, Surveys and Mapping, historical map courtesy of ACMLA / La représentation 3-D est fournie par la Ville d'Ottawa, Secteur des levés et cartographie; les cartes historiques sont une gracieuseté de l'ACACC.

# 200 D-SIZE COLOUR PRINTS. BY 9 AM. NO PROBLEM.

Introducing the HP Designjet 4500 Printer series.  
Unattended printing makes getting more done possible.



#### HP DESIGNJET 4500 PRINTER SERIES<sup>1</sup>

- Large input, output and ink capacities that enable virtually unattended operation
- Exceptional output quality
- Sophisticated printer management and monitoring
- High-performance copy and scan (available with Designjet 4500mfp)

Could you use more time? Now you don't have to spend as much of it attending to your printer thanks to the new HP Designjet 4500 Printer series. Two high-capacity media rolls and high-capacity ink cartridges enable fast, virtually unattended printing of dozens of wide-format colour prints – up to 200 D-size colour prints with the optional stacker. The stacker and high-capacity media and ink capabilities let you set big jobs to print overnight to hit early deadlines and free up the printer for daytime use. Whether you are printing complex orthophoto, topographic or survey maps, you will get the outstanding HP colour quality and crisp line definition you expect.

See a demo – Contact your authorized  
HP Colour Elite reseller today!

Click [www.hp.ca/dj4500](http://www.hp.ca/dj4500)  
Visit **your local HP reseller**



**PROGRAM COMMITTEE**

**COMITÉ DE LA CONFÉRENCE**

- Louise Boily, Public Health Agency of Canada/Agence de santé Publique du Canada
- Sébastien Caquard, Cybercartography and the New Economy Project, Carleton University
- Marc Cockburn, Library and Archives Canada/Bibliothèque et Archives Canada (Association of Canadian Map Libraries and Archives/ Association des Cartothèques et Archives Cartographiques du Canada)
- Kelly Dean, Agriculture and Agri-Food Canada/Agriculture et Agroalimentaire Canada
- Christine Earl, Carleton University (Canadian Cartographic Association/ L' Association canadienne de cartographie)
- Christopher Eckstein, Ontario Ministry of Natural Resources/Ministère des Richesses naturelles de l'Ontario
- Ian Gillespie, Environment Canada/Environnement Canada
- Jody Jeffrey, PCI Geomatics
- Ed Kennedy, Geomatics Industry Association of Canada/ L'Association Canadienne des Entreprises de Géomatique
- Dave McIlhagga, DM Solutions
- Susan Mowers, University of Ottawa (Association of Canadian Map Libraries and Archives/ Association des cartothèques et archives cartographiques du Canada)
- Stephen Perkins, City of Ottawa/Ville d'Ottawa
- Mike Sawada, University of Ottawa/Université d'Ottawa
- Neil Spooner, ESRI Canada
- Cameron Wilson, Natural Resources Canada/Ressources naturelles Canada
- Geoff Zeiss, Autodesk

**Celebrating Technology and Innovation**

This year's GeoTec Event marks the 100th anniversary of the Atlas of Canada and the 20th anniversary of the event. This year also marks an expansion of the audience with the co-location of the annual meetings of the Association of Canadian Map Libraries and Archives, the Canadian Cartographic Association and the Geomatics Industry Association of Canada's Leaders Forum.

This document is designed to help you navigate all the offerings at this event. The Conference at a Glance grid starting on page 16 provides a broad overview of everything that is taking place. You may also search by subject and by day.

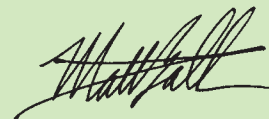
We hope you enjoy your time at the 2006 GeoTec Event. Thank you for attending and please don't hesitate to visit the show management office in the Executive Suite if there's anything we can do to make this experience more rewarding.

**Célébration de la Technologie et de l'Innovation**

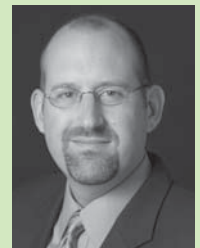
La conférence GeoTec de cette année souligne le 100e anniversaire de l'Atlas du Canada de même que le 20e anniversaire de l'événement. Cette année est également marquée par l'expansion du nombre de participants avec le co-emplacement des assemblées annuelles de l'Association des cartothèques et archives cartographiques du Canada, de l'Association canadienne de cartographie et du Forum annuel des leaders en géomatique de l'Association canadienne des entreprises de géomatique.

Ce document est conçu pour vous guider à travers toutes les contributions à cet événement. La grille « Coup d'oeil sur la conférence » à la page 16 fournit une vue d'ensemble de tout ce qui est offert. Vous pouvez également consulter une liste de présentations et activités par sujet et par jour.

Nous espérons que vous apprécierez l'événement 2006 de GeoTec. Merci de votre présence et n'hésitez pas à visiter le bureau de gestion d'exposition dans la suite exécutive si nous pouvons faire quelque chose pour rendre votre expérience plus enrichissante.



Matt Ball  
Show Manager and Editor,  
*GeoWorld* magazine  
Responsable du salon et rédacteur  
en chef, Magazine *GeoWorld*



**TABLE OF CONTENTS /  
TABLE DES MATIÈRES**

Conference at a Glance . . . . .	16-17
Exhibitor Directory /Répertoire des Exposants . . .	23-27
Floor Plans/Map . . . . .	28-29
General Information /Information Générale . . . . .	30
General Sessions/Séances Générales . . . . .	4
GIAC . . . . .	18
Registration /Inscription . . . . .	30
Sessions by Day/Séances Quotidiennes	
Monday /Lundi . . . . .	8-9
Tuesday / Mardi . . . . .	10-13
Wednesday /Mercredi . . . . .	14, 19, 20
Sessions by Subject/Séances par Sujet . . . . .	6-7
Special Events /Activités Spéciales . . . . .	15
Vendor Seminars /Séances des Fournisseurs . . . . .	21-22
Workshops/Ateliers . . . . .	5

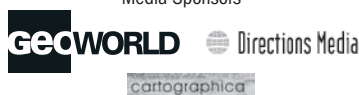
This year, the GeoTec Event will be co-located with the following organizations /  
Cette année, la conférence GeoTec sera donnée en collaboration avec les organismes suivants:



Supporting Organizations / Organismes de soutien



Media Sponsors



**MONDAY, JUNE 19/  
LUNDI 19 JUIN**

**08:30 - 09:00**

**OCC - Hall E**

**Opening Ceremony /  
Cérémonie d'ouverture**

Matt Ball, Show Manager, GeoTec Event  
The Honourable Gary Lunn, Minister, Natural Resources Canada / Ressources naturelles Canada  
Ian Wilson, Librarian and Archivist of Canada, Library and Archives Canada / Bibliothèque et Archives Canada  
Elizabeth Wong, Stamp Manager, Canada Post / Postes Canada

**09:00 - 10:00**

**OCC - Hall E**

**Opening Keynote /  
Discours d'ouverture**

Ambient Findability:  
Mapping the Future Present  
Peter Morville, President,  
Semantic Studios, Ann Arbor,  
MI, USA



Ambient findability describes a world, at the crossroads of ubiquitous computing and the Internet, in which we can find anyone or anything from anywhere at anytime. It's not necessarily a goal, since this vision raises serious questions about privacy. And we'll never reach the destination, for perfect findability is impossible. But we're surely headed in the right direction, and it's about time we surveyed the road ahead.

Of course, it's not so easy to map this territory where boundaries blur, for as the Web becomes both interface and infrastructure for a location-aware Internet of objects we can barely imagine, search and wayfinding are combining to create a whole new category of spatio-semantic experience, and an entirely new relationship to place.

In this provocative cyberspace safari, Peter Morville explores the future present in mobile devices, mapping mashups, geotags, sensors, search algorithms, ontologies, folksonomies, findable objects, and the long tail of the geospatial Web. Reflect with Peter as he challenges us to think differently about the power of search and findability to redefine where we go, what we find, and who we become.

**CONCURRENT PANEL  
DISCUSSIONS / DISCUSSIONS  
EN GROUPES SIMULTANÉES**

Join one of two concurrent panels that will address future technology directions. Audience participation is encouraged and facilitated.

Joignez-vous à un des deux panels simultanés qui porteront sur les orientations technologiques futures. Nous encourageons et favorisons la participation du public.

**10:30 - 12:00**

**PANEL—Geospatial Technology**

**Outlook  
OCC - Hall E**

*Moderator: Matt Ball, Editor, GeoWorld magazine,  
Boulder, CO, USA*

Panelists:

Joseph K. Berry, Keck Scholar in the Geosciences, University of Denver, Denver, CO, USA  
Dr. Berry is column author of "Beyond Mapping" for *GeoWorld*. He has written more than 200 papers on the analytic capabilities of GIS, and he authored the popular books "Beyond Mapping" and "Spatial Reasoning." Since 1976, he has presented workshops on GIS technology and map analysis concepts to thousands of professionals.

Henry Kucera, President, Swiftsure Spatial Systems, Victoria, BC, Canada

Mr. Kucera is a recognised expert in spatial and temporal systems design in Canada and abroad. His experience in spatial information management and analysis spans the fields of agriculture, mining, mineral and petroleum exploration, forestry, facilities management, health information, remote sensing, nautical charting and topographic mapping.

Nick Chrisman, Professor of Geomatics Sciences, Université Laval, Québec, QC, Canada  
Dr. Chrisman's research has concentrated on time in GIS, data quality testing and the social and institutional aspects of GIS. He serves as Scientific Director of the GEOIDE Network, one of the Networks of Centres of Excellence.

**PANEL—National Atlases:  
Now and in the Future  
OCC - 4B/5B**

This panel brings together the private sector, academia, Canadian and U.S. government leaders to discuss their views on National Atlases. Each panelist will provide a brief overview followed by a question and answer session. Potential discussion points are: Why a national atlas? What form of governance suits national atlases in the future? What are the roles of government, industry, academia and the public in a national atlas? What is the balance between a citizen participatory atlas and an authoritative atlas?

*Moderator: Cameron Wilson, Project Manager, Atlas of Canada, Natural Resources Canada, Ottawa, ON, Canada*

Panelists:

Karen Siderelis, Associate Director for Geospatial Information and Chief Information Officer, U.S. Geological Survey, Reston, VA, USA

Irwin J. Itzkovitch, Assistant Deputy Minister, Earth Sciences Sector, Natural Resources Canada, Ottawa, ON, Canada

Fraser Taylor, Distinguished Research Professor in International Affairs, Geography and Environmental Studies, and the Director of the Geomatics and Cartographic Research Centre, Carleton University, Ottawa, ON, Canada

Alex Miller, President, ESRI Canada, Toronto, ON, Canada

**Gala Dinner Keynote /  
Conférencier-invité au dîner de gala**

Rex Murphy presents informed, insightful and sometimes biting commentary. Murphy is a social commentator and editorial journalist with weekly television commentary on *The National Magazine*, host of the Sunday afternoon CBC Radio program *Cross Country Checkup*, an editorial contributor to CBC Radio's *Definitely Not the Opera*, and a weekly Saturday columnist in *The Globe and Mail*.



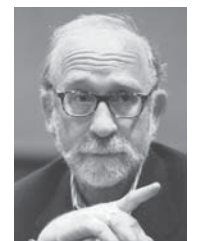
**WEDNESDAY, JUNE 21/  
MERCREDI 21 JUIN**

**08:00 - 09:00**

**OCC - Hall E**

**Keynote Breakfast /  
Petit-déjeuner conférence**

The Meaning in the Map:  
Examples from Medical Cartography  
Tom Koch, Adjunct Professor of Geography (medical) University of British Columbia and Adjunct Professor of Gerontology, Simon Fraser University, Vancouver, BC, Canada



Mapping is about collecting data and presenting ideas that define the policies that make the world in which we live. The result is not "representative," as in a picture of the world. It is instead the world centered on a specific problem and the solution we wish to achieve. Medical geographer and historian Tom Koch argues that this is what mapping has always done and what it does for us today. The author of *Cartographies of Disease*, a history of medical mapping from 1690 to the present redefines mapping and its purpose through the medical example, showing how modern GIS technologies increase the potential of the process.

**GEOTEC**

**SUNDAY, JUNE 18 /  
DIMANCHE 18 JUIN**

**09:00 - 17:00**

OCC - Room 1A

**Best Practices for Developing Geographic Information Models**

*David Arctur, Interoperability Engineer, ESRI, Austin, TX, USA and Douglas Adams, Baltimore County GIS Manager, Baltimore, MD, USA*

**URISA CERTIFIED WORKSHOP**

This workshop shows how you can build on your existing data and skills to take advantage of the latest generation of GIS tools and practices for database design. After an introduction to the fundamental concepts of GIS database design, a variety of case studies of GIS databases will be discussed.

OCC - Room 5A

**eGovernment—Planning, Policy and the Portal**

*Jury Konga, manager, GIS Services, Town of Richmond Hill, Richmond Hill, ON, Canada*

**URISA CERTIFIED WORKSHOP**

This workshop is a must to understand the full scope of what eGovernment is and to assess the role that technologies such as GIS need to play.

OCC - Room 6A

**Geospatial Metadata Implementation Strategies**

*Bruce Westcott, Geospatial Metadata Consultant, Marshfield, VT, USA*

The United States and Canada are working together to develop a North American “profile” of ISO metadata for joint use. The goal of the workshop is to help information managers and metadata authors gain a complete conceptual understanding of the challenges and benefits of profile compliance.

OCC - Room 4A

**GIS Modeling**

*Joseph Berry, Keck Scholar in Geosciences, University of Denver, Denver, CO, USA*

This intermediate level workshop presents the basic concepts, procedures and applications of grid-based GIS modeling with emphasis in natural resources, environmental management and business geographics.

University of Ottawa, LAGGIS, 60

University Street

**Integrating Geomatics and Photorealistic Geovisualization**

*Michael Sawada, Associate Professor of Geomatics and Director Laboratory for Applied Geomatics and GIS Science (LAGGIS), Geography, University of Ottawa and Zoran Reljic, M. Sc. Candidate, LAGGIS, Ottawa, ON, Canada*

This hands-on workshop will provide practical knowledge in the application of contemporary geovi-

ualization and its integration with state-of-the-art “Hollywood” photorealistic visualization software. The workshop will be held in a computer lab.

OCC - Room 2A

**Introduction to Open Source GIS**

*Paul Ramsey, President, Refractions Research, Victoria, BC, Canada*

This hands-on workshop will cover the building of a complete spatial data management system using only open-source components. Participants will install and configure the spatial database, load demonstration data into it, view the data and edit it with a desktop tool, create a Web mapping service that publishes cartographic maps to the Internet, and create a Web feature service that publishes GML to the Internet.

OCC - Room 3A

**OGC Web Services**

*Sam Bacharach, executive director, Outreach and Adoption Program, The Open Geospatial Consortium, Fairfax, VA, USA*

This workshop will explain the foundation of international standardization efforts, including those of the International Organization for Standardization (ISO), relate them to specific business case requirements, and delve into technical detail about the OpenGIS Implementation and Encoding specifications that form the Open Geospatial Consortium family of standards.

**ACMLA/L'ACACC**

**SATURDAY, JUNE 17 /  
SAMEDI 17 JUIN**

**09:00 - 17:00**

University of Ottawa, Morisset Library, Room 211

**Demystifying Geospatial Data Cataloguing**

*Mary Larsgaard, Assistant Head, Map and Imagery Laboratory, Alexandria Digital Library/Davidson Library, University of California, Santa Barbara, CA, USA and Frank Williams, University of Ottawa and Christine Alexander, Library and Archives Canada, Ottawa, ON, Canada*

This one-day workshop is intended for cataloguers and map librarians who want to learn the basics of cataloguing geospatial data.

**SUNDAY, JUNE 18 /  
DIMANCHE 18 JUIN**

**09:00 - 17:00**

Carleton University, MacOdrum Library, Room 102

**GIS Reference Services**

*Heather McAdam, Carleton University and Susan Mowers, University of Ottawa, Ottawa, ON, Canada*

This hands-on workshop will deal with geospatial reference questions with an introduction to ArcCatalog.

**CCA/L'ACC**

**SUNDAY, JUNE 18 /  
DIMANCHE 18 JUIN**

**09:00 - 12:30**

Carleton University, Loeb A237

**Managing Geographic Names in a GIS**

*David Raymond, Cartography Faculty, Centre of Geographic Sciences (COGS), Lawrencetown, NS, Canada*

This workshop will encompass four parts: 1. Results of the GIS Reference Survey. 2. Discussion of geospatial reference questions. 3. Introduction to MrSID images. 4. Custom ArcGIS map project using data digital air photos, satellite images and road network data.

**13:30 - 17:00**

Carleton University, Loeb A220

**Planning for and Implementing Cartographic Representations in ArcGIS 9.2**

*Robert Jensen, cartographer, and Peter Kasianchuk, instructor, ESRI, Redlands, CA, USA*

This workshop will discuss the “best practices” for preparing a geodatabase and will demonstrate the creation, interaction and management of representations in map production.



Photo By: University of Ottawa

## ATLASES, CARTOGRAPHY AND VISUALIZATION

The history of Canada is reflected in the history of the atlas. In recognition of the centennial, this track is designed to celebrate the past and explore future roles of atlases. This track represents the effective use of cartographic skills for map communication, and the many new means for more realistic map visualization. In addition, this track explores the impact of digital data and software tools on traditional cartographic skills and atlas creation.

### Monday, June 19/ Lundi 19 juin

#### 13:00 - 14:30

Regional Atlases (CCA) — OCC, Room 3A  
Reporting Framework — OCC, Room 4B  
Past and Present Atlas — OCC, Room 5B

#### 15:30 - 17:00

History of Cartography (CCA/ACMLA) — OCC, Room 3A  
Atlas Futures — OCC, Room 5B

### Tuesday, June 20/ Mardi 20 juin

#### 09:00 - 10:30

Mountain Cartography and DEMs I (CCA) — GCC, Annex Room  
The Future of Internet Mapping (ICA Commission on Maps and the Internet) — OCC, Room 2A

#### 11:00 - 12:30

Mountain Cartography and DEMs II (CCA) - GCC, Annex Room

#### 13:30 - 15:00

PANEL—Future of Topographic Mapping in Canada (ACMLA) - GCC, Sussex Room  
Map Design I (CCA) - GCC, Annex Room

#### 15:30 - 17:00

PANEL—Cybercartography: Maps and Mapping in the Information Era — GCC, Sussex Room  
Map Design II (CCA) - GCC, Annex Room

### Wednesday, June 21/ Mercredi 21 juin

#### 09:00 - 10:30

Planning for the Future (ACMLA) — GCC, Annex Room

#### 13:30 - 15:00

PANEL—Atlas of Canada: Future Opportunities — GCC, Annex Room  
User-Centered Design and Development (CCA) — OCC, Room 1A

## ENTERPRISE INTEGRATION

Geospatial technology is increasingly finding a home in information technology (IT) departments. This track includes sessions on IT requirements for geospatial technology integration, spatial databases, enterprise application integration, Web services, geospatial intelligence and document management.

### Monday, June 19/ Lundi 19 juin

#### 13:00 - 14:30

Transforming to IT Infrastructure — OCC, Room 2A

#### 15:30 - 17:00

System Integration Examples — OCC, Room 2A

### Tuesday, June 20/ Mardi 20 juin

#### 11:00 - 12:30

Web Mapping — OCC, Room 2A

#### 13:30 - 15:00

Decision Support Systems — OCC, Room 4B

#### 15:30 - 17:00

Public Safety — OCC, Room 2A

### Wednesday, June 21/ Mercredi 21 juin

#### 09:00 - 10:30

Database Development — OCC, Room 2A

#### 11:00 - 12:30

Collaborative Resource Management — OCC, Room 2A

## GEO SPATIAL DATA

Timely access to accurate geospatial data is crucial to any GIS project. Sessions will address data storage, field data collection, data integration, management, dissemination, development and promotion of standards and best practices.

### Monday, June 19/ Lundi 19 juin

#### 13:00 - 14:30

Parcel Mapping — OCC, Room 1A

#### 15:30 - 17:00

Cross-Border Census Collaboration — OCC, Room 1A

### Tuesday, June 20/ Mardi 20 juin

#### 09:00 - 10:30

Archiving I (ACMLA) — GCC, Sussex Room  
Data Sharing Agreements — OCC, Room 1A

#### 11:00 - 12:30

Archiving II (ACMLA) — GCC, Sussex Room

#### 13:30 - 15:00

Road Network — OCC, Room 1A

#### 15:30 - 17:00

Elevation Data — OCC, Room 1A

### Wednesday, June 21/ Mercredi 21 juin

#### 13:30 - 15:00

Geographic Names — OCC, Room 4B

## GEO SPATIAL RESEARCH AND EDUCATION

This track offers educational research highlights and a forum for educators, students and employers to measure curriculum against occupational demand.

### Wednesday, June 21/ Mercredi 21 juin

#### 09:00 - 10:30

PANEL—Map Production and Education: What We Do and What We Teach (CCA) — OCC, Room 3A

#### 13:30 - 15:00

Cartography and GIS: Human Dimensions (CCA) — OCC, Room 3A

#### 15:30 - 17:00

Geospatial Career Opportunities Panel — OCC, Room 4B

## GIS DEVELOPMENT

The flexibility of current GIS tools and architecture has led to increased flexibility for solution customization. This track contains sessions on tools and resources to empower the advanced GIS user and systems integrator to create custom solutions of their own.

### Monday, June 19/ Lundi 19 juin

#### 13:00 - 14:30

Business Geographics — GCC, Annex Room

#### 15:30 - 17:00

Immersive Environments — OCC, Room 4B

**Tuesday, June 20/  
Mardi 20 juin**

**09:00 - 10:30**

Analytical Problems in GIS (CCA) — OCC, Room 3A

**11:00 - 12:30**

Collaboration Tools — OCC, Room 1A  
Incorporating Real-Time Data Feeds — OCC, Room 3A

**13:30 - 15:00**

Open Source Overview — OCC, Room 3A  
Visualization — OCC, Room 2A

**15:30 - 17:00**

Geographic Exploration Systems — OCC, Room 5B  
Open Source Applications — OCC, Room 3A

**Wednesday, June 21/  
Mercredi 21 juin**

**09:00 - 10:30**

Location-Based Services - OCC, Room 7A  
Web 2.0 a Platform for Geomatics and the Atlas of Canada — OCC, Room 1A

**11:30 - 12:30**

Imagery Analysis — OCC, Room 7A

**13:30 - 15:00**

Analytical Approaches — OCC, Room 7A

**GIS AND PUBLIC POLICY**

GIS is a powerful tool for local and national policy makers. This track deals with data policy issues as well as the application of GIS in social services, emergency response, and disaster planning and mitigation efforts.

**Tuesday, June 20/  
Mardi 20 juin**

**11:00 - 12:30**

Decision Support for Emergencies — OCC, Room 4B

**Wednesday, June 21/  
Mercredi 21 juin**

**09:00 - 10:30**

Mapping Issues in the Geography of Health (CCA), OCC, Room 4B

**11:00 - 12:30**

Climate Change — OCC, Room 1A  
Public Health — OCC, Room 4B  
Contemporary and Historical Geographies of the Canadian Métis — OCC, Room 3A

**13:30 - 15:00**

PANEL—PC-IDEA — OCC, Room 2A

**INFRASTRUCTURE AND  
INTEROPERABILITY**

Geospatial data must be shared in order to leverage existing investments and minimize production costs and the duplication of effort. Learn how the geospatial data barrier problem is being solved by both large-scale data distribution efforts, such as the GeoConnections program, and the data and system standardization efforts of the Open Geospatial Consortium.

**Monday, June 19/  
Lundi 19 juin**

**15:30 - 17:00**

Data Access — GCC, Sussex Room

**Tuesday, June 20/  
Mardi 20 juin**

**09:00 - 10:30**

Northern Initiatives — OCC, Room 7A

**11:00 - 12:30**

Imagery Management and Distribution — OCC, Room 7A

**13:30 - 15:00**

System Interoperability — OCC, Room 7A

**15:30 - 17:00**

International Standards — OCC, Room 7A

**Wednesday, June 21/  
Mercredi 21 juin**

**11:00 - 12:30**

Data Distribution Issues — OCC, Room 5B

**13:30 - 15:00**

Canadian and U.S. Partnerships — OCC, Room 5B

**INTEGRATED CASE STUDIES**

These sessions are devoted to a specific organization's implementation of integrated geospatial technology. Presentations provide multiple perspectives with a focus on increased efficiency, better decision making and reduced costs.

**Monday, June 19/  
Lundi 19 juin**

**15:30 - 17:00**

CLAIMaps and Geology Ontario — GCC, Annex Room

**Tuesday, June 20/  
Mardi 20 juin**

**09:00 - 10:30**

How the City of Sarajevo Reduced the Cost of Infrastructure Locate Requests through Automation — OCC, Room 5B

Hurricane Katrina — OCC, Room 4B

**11:00 - 12:30**

National Land and Water Information Service (NLWIS) — OCC, Room 5B

**15:30 - 17:00**

Defence Geomatics — OCC, Room 4B

**Wednesday, June 21/  
Mercredi 21 juin**

**09:00 - 10:30**

On-Demand Mapping at the Innovation Acceleration Centre (IAC) within Natural Resources Canada (NRCAN), International Division — OCC, Room 5B

**11:00 - 12:30**

Hands-On: Build an Interactive Online Atlas with the Cybercartographic Atlas Framework — GCC, Annex Room

**POSTER SESSION**

The following poster presentations will take place in the poster area in the Exhibit Hall. Authors will be available to discuss their presentations during the Opening Reception from 4 - 6 p.m. on Tuesday, June 20. The posters will be displayed throughout the conference.

**Design and Implementation of a Moving Objects Server for Location-Based Services**, InSung Jang, Senior Researcher, ETRI, Daejeon, South Korea

**National Atlases of European Countries: Brief Overview and Comparison**, Vit Vozelinek, Dept. of Geoinformatics, Palacky University in Olomouc, Olomouc, Czech Republic

**The Use of Geographic Metadata Catalogues: A Contextual Inquiry**, Shelley Roberts, PhD. Candidate, Carleton University, Ottawa, ON, Canada

## MONDAY, JUNE 19/ LUNDI 19 JUIN

**08:30 - 9:00**

### Introduction — OCC, Hall E

**Opening Remarks**, Matt Ball, Editor, *GeoWorld* magazine, Boulder, CO, USA

**Welcome**, The Honourable Gary Lunn, Minister of Natural Resources, Ottawa, ON, Canada

**Terra Nostra Book Launch**, Ian E. Wilson, Librarian and Archivist of Canada, Library and Archives Canada / Bibliothèque et Archives, Canada, Ottawa, ON, Canada

**Commemorative Stamp**, Elizabeth Wong, Manager of Stamp Design and Production, Canada Post, Ottawa, ON, Canada

**09:00 - 10:00**

### Opening Keynote—Ambient Findability: Mapping the Future Present — OCC, Hall E

Peter Morville, president Semantic Studios and professor at the University of Michigan's School of Information, Ann Arbor, MI, USA

**10:30 - 12:00**

### PANEL—Geospatial Technology Outlook—OCC, Hall E

*Moderator: Matt Ball, Editor, GeoWorld magazine, Boulder, CO, USA*

**Panelist**, Joseph K. Berry, Keck Scholar in the Geosciences, University of Denver, Denver, CO, USA

**Panelist**, Henry Kucera, President, Swiftsure Spatial Systems, Victoria, BC, Canada

**Panelist**, Nick Chrisman, Professor of Geomatics Sciences, Université Laval, Québec, QC, Canada

### PANEL—National Atlases: Now and in the Future—OCC, Room 4B/5B

*Moderator: Cameron Wilson, Project Manager, Atlas of Canada, Natural Resources Canada, Ottawa, ON, Canada*

**Panelist**, Karen Siderelis, Associate Director for Geospatial Information and Chief Information Officer, U.S. Geological Survey, Reston, VA, USA

**Panelist**, Irwin J. Itzkovitch, Assistant Deputy Minister, Earth Sciences Sector, Natural Resources Canada, Ottawa, ON, Canada

**Panelist**, Fraser Taylor, Distinguished Research Professor in International Affairs, Geography and Environmental Studies, and the Director of the Geomatics and Cartographic Research Centre, Carleton University, Ottawa, ON, Canada

**Panelist**, Alex Miller, President, ESRI Canada, Toronto, ON, Canada

**13:00 - 14:30**

### ATLASES, CARTOGRAPHY & VISUALIZATION

#### Past and Present Atlas — OCC, Room 5B

*Moderator: Donna Williams, Project Manager, Atlas of Canada, Natural Resources Canada, Ottawa, ON, Canada*

**The Evolution of the Atlas of Canada 1906-2006**, Claire Gosson, Senior Geographer, Natural Resources Canada, Ottawa, ON, Canada

**The Historical Atlas of Canada Online Learning Project: Past, Present and Future**, Byron Moldofsky, Cartographer and GIS Analyst, University of Toronto, Toronto, ON, Canada

**The U.S. Census: 1870 and Today**, Tim Trainor, Assistant Division Chief for Geographic Areas and Cartographic Data Products, U.S. Census Bureau, Washington, D.C., USA

### ATLASES, CARTOGRAPHY & VISUALIZATION

#### Regional Atlases (CCA) — OCC, Room 3A

*Moderator: Sébastien Caquard, Post-Doctoral Fellow, Carleton University, Ottawa, ON, Canada*

**Atlas of Tehran Metropolis**, Mohammad Hassan Mousavizadeh, Petroleum University of Technology, Tehran, Iran

**A Renewal of Indonesian National Atlas**, Trini Hastuti, Head for Resource and Public Atlas Division, National Coordinating Agency for Surveys and Mapping, Jakarta, Indonesia

**Do Regional Atlases Age Well?**, Majella-J. Gauthier, Geographer, Professor Emeritus, Université du Québec à Chicoutimi, Chicoutimi, QC, Canada

### GeoConnections Regional Atlas: An Integrated Approach to Regional Decision-Making.

Denis Poliquin, Regional Atlas Advisor GeoConnections, Ottawa, ON, Canada

### ATLASES, CARTOGRAPHY & VISUALIZATION

#### Reporting Framework — OCC, Room 4B

*Moderator: Bruce Westcott, Geospatial Metadata Consultant, Marshfield, VT, USA*

**Protected Areas: A New Canadian Framework for National Reporting**, Anna Regan, Geomatics Engineer, Natural Resources Canada, Ottawa, ON, Canada

**Watersheds: The Evolution of a New Environmental Star**, Peter Paul, Project Manager, Natural Resources Canada, Ottawa, ON, Canada

**GI Management in an Atlas Project**, Vit Vozelinek, Dept. of Geoinformatics, Palacky University in Olomouc, Olomouc, Czech Republic

### ENTERPRISE INTEGRATION

#### Transforming to IT Infrastructure — OCC, Room 2A

*Moderator: Stephen Perkins, City of Ottawa, Ottawa, ON, Canada*

**Best Practices for Enterprise and Multi-agency GIS**, Vivek Bajjal, Vice President, Consulting, Linnet Systems, Kanata, ON, Canada

**Enterprise GIS - The Ottawa Experience**, Laine Wyman, GIS Manager, City of Ottawa, Ottawa, ON, Canada

**Inter Agency Committee on Geomatics: Perspectives on the Coordination of Geomatics in the Federal Government**, Julie Leese, Director Geomatics, Public Works and Government Services Canada, Ottawa, ON, Canada

### GEOSPATIAL DATA

#### Parcel Mapping — OCC, Room 1A

*Moderator: Robert Penner, Supervisor, Business Systems Improvement, Town of Markham, Markham, ON, Canada*

**There's Got to be a Better (Mapping) Mousetrap!**, Bill Martin, Partner, Martin Newby Consulting, Calgary, AB, Canada



**Ontario Parcel Program — Revisited**, Mike Power, Executive Director, eServices, Teranet Inc., Toronto, ON, Canada

**Geographic IQ: The Impact of Convergence**, Mike Donald, Managing Director, Terralink International Limited, Wellington, New Zealand

**GIS DEVELOPMENT**  
**Business Geographics —**  
**GCC, Annex Room**

**What's New in Business GIS?**, Deepta Rayner, Research Solutions Inc., Toronto, ON, Canada

**Getting Down to the Postal Code**, Don Penfold, Research Solutions Inc., Toronto, ON, Canada

**Retail Competition Analysis**, Joseph Berry, Keck Scholar in Geosciences, University of Denver, Denver, CO, USA

**15:30 - 17:00**

**ATLASES, CARTOGRAPHY &**  
**VISUALIZATION**

**Atlas Futures — OCC, Room 5B**

*Moderator: Denis Hains, Director, GeoAccess Division, Natural Resources Canada, Ottawa, ON, Canada*

**Future Vision for the Atlas of Canada**, Marc D'Iorio, Director General, Canada Centre for Remote Sensing, Natural Resources Canada, Ottawa, ON, Canada

**Cybercartographic Atlases, Society and Government: New Directions for the Future**, Fraser Taylor, Distinguished Research Professor in International Affairs, Geography and Environmental Studies, and the Director of the Geomatics and Cartographic Research Centre, Carleton University, Ottawa, ON, Canada

**The Animated Atlas**, Michael Peterson, Professor of Geography, University of Nebraska at Omaha, Omaha, NE, USA

**ATLASES, CARTOGRAPHY &**  
**VISUALIZATION**

**History of Cartography (CCA/ACMLA)**  
**— OCC, Room 3A**

*Moderator: Betty Kidd, (Retired), National Archives of Canada, Ottawa, ON, Canada*

**David Thompson's Mapping of the International Boundary, 1816-1826**, Frances Pollitt, Maine Historical Society, Portland, ME, USA

**Why Did Augustus Jones Cease Surveying in 1800?**, Alun Hughes, Associate Professor, Department of Geography, Brock University, St. Catharines, ON, Canada

**Re-envisioning the Map Display Case: Libraries, Historic Maps and Google Earth**, Larry W. Laliberté, GIS Librarian, University of Manitoba, Winnipeg, MB, Canada

**Historical Maps Showing First Nations in the Southern Interior of British Columbia**, Ken Favrholt, Instructor, Thompson Rivers University, Kamloops, BC, Canada

**ENTERPRISE INTEGRATION**  
**System Integration Examples —**  
**OCC, Room 2A**

*Moderator: Laine Wyman, GIS Manager, City of Ottawa, Ottawa, ON, Canada*

**Asset Management Integration for Sign Maintenance**, Robert Penner, Supervisor, Business Systems Improvement, Town of Markham, Markham, ON, Canada

**Integrating GIS with Document Management**, Hugh Ritchie, Solutions Manager, Hummingbird, Toronto, ON, Canada

**GEOSPATIAL DATA**  
**Cross-Border Census Collaboration —**  
**OCC, Room 1A**

*Moderator: Paula Hurtubise, Chief Client Liaison, Geography Division, Statistics Canada, Ottawa, ON, Canada*

**Finding Common Ground - Analysis of Geographic Units Between the U.S. Census Bureau and Statistics Canada**, Timothy Trainor, Assistant Division Chief for Geocartographic Products and Customer Services, U.S. Census Bureau, Washington, D.C., USA and Henry Puderer, Chief, Geographic Concepts, Statistics Canada, Ottawa, ON, Canada

**The Road Network File**, Randy Fusaro, Chief, National Geographic Partnerships Team, U.S. Census Bureau, Washington, D.C., USA and Peter Rushforth, Senior GIS Systems Analyst, Statistics Canada, Ottawa, ON, Canada

**GIS DEVELOPMENT**  
**Immersive Environments —**  
**OCC, Room 4B**

*Moderator: Joseph Berry, Keck Scholar in Geosciences, University of Denver, Denver, CO, USA*

**Virtual University City**, Marlen Kokaz, GIS Director, University Of Pennsylvania, Philadelphia, PA, USA

**Digital City Models from the Ground Up**, Fuad Khan, Photogrammetry Team Lead/Engineer, Immersive Media Corp., Calgary, AB, Canada

**Photorealistic Geovisualization**, Michael Sawada, Associate Professor of Geomatics and Director Laboratory for Applied Geomatics and GIS Science (LAGGISS), Geography, University of Ottawa, Ottawa, ON, Canada

**INFRASTRUCTURE &**  
**INTEROPERABILITY**  
**Data Access — GCC, Sussex Room**

*Moderator: Christopher Eckstein, Ontario Ministry of Natural Resources, Peterborough, ON, Canada*

**Leveraging Google Earth for Local Government Data Dissemination**, Jason Birch, Sr. Applications Analyst, City of Nanaimo, Nanaimo, BC, Canada

**Topographic Information Available through Web Mapping Services**, Pierre Desjardins, Project Manager, Natural Resources Canada, Sherbrooke, QC, Canada

**The Community Information Database (CID)**, Kate Humpage, Manager of Research and Analysis, Agriculture and Agri-Food Canada, Calgary, AB, Canada

**INTEGRATED CASE STUDY**  
**CLAIMaps and Geology Ontario**  
**— GCC, Annex Room**

Brian Berdusco, GIS Project Manager, Ontario Ministry of Northern Development and Mines, Sudbury, ON, Canada

## TUESDAY, JUNE 20 / MARDI 20 JUIN

09:00 - 10:30

### ATLASES, CARTOGRAPHY & VISUALIZATION

#### Mountain Cartography and DEMs I (CCA) — GCC, Annex Room

*Moderator: Roger Wheate, Geography/GIS  
Coordinator, University of Northern British  
Columbia, Prince George, BC, Canada*

**Designing a New Visitor Map of Glacier  
Bay National Park, Alaska**, Tom Patterson,  
Cartographer, Harpers Ferry Center, U.S.  
National Park Service, Harpers Ferry, WV, USA

**Current Mountain Cartographic Work by  
the Alpine Mapping Guild**, Martin Gamache,  
Alpine Mapping Guild & American Alpine  
Journal, Boston, MA, USA

**Mapping the Natural Playgrounds of  
New Zealand: The Terralink International  
Recreational Map Series**, Fanny Larivière,  
Cartography Unit Manager, Terralink  
International Limited, Wellington, New Zealand

### ATLASES, CARTOGRAPHY & VISUALIZATION

#### PANEL—The Future of Internet Mapping (ICA Commission on Maps and the Internet) — OCC, Room 2A

*Moderator: Michael P. Peterson, Chair, Maps  
and the Internet Commission of the International  
Cartographic Association, Professor, University of  
Nebraska at Omaha, Omaha, NE, USA*

**Panelist**, Sverre Iversen, Senior Engineer, GIS  
and Web Application Developer, Geological  
Survey of Norway, Trondheim, Norway

**Panelist**, Jeff McKenna, Geomatics Manager,  
DM Solutions Group, Ottawa, ON, Canada

**Panelist**, Peter L. Pulsifer, Research Associate,  
Geomatics and Cartographic Research Centre,  
Carleton University, Ottawa, ON, Canada

**Panelist**, Tim Trainor, Assistant Division Chief  
for Geographic Areas and Cartographic Data  
Products, U.S. Census Bureau, Washington,  
D.C., USA

### GEOSPATIAL DATA Archiving I (ACMLA) — GCC, Sussex Room

*Moderator: Anna Jasiak, Research Geographer, Atlas  
of Canada, Natural Resources Canada, Ottawa,  
ON, Canada*

**Archiving and Preserving Geospatial Data: Some  
Challenges**, Fraser Taylor, Distinguished Research  
Professor in International Affairs, Geography and  
Environmental Studies, and the Director of the  
Geomatics and Cartographic Research Centre,  
Carleton University, Ottawa, ON, Canada

**Do Data Access Portals, Repositories, and  
Catalogues, Preserve or Archive Geospatial  
and Science Data?**, Tracey Lauriault, Carleton  
University, Ottawa, ON, Canada

**Case Study in Building a Preservation  
Environment for a GIS**, Evelyn Peters McLellan,  
Corporate Information Analyst, Insurance  
Corporation of British Columbia, Vancouver,  
BC, Canada

### GEOSPATIAL DATA Data Sharing Agreements — OCC, Room 1A

*Moderator: Greg Bay, Manager, Data Warehousing  
and Distribution Systems, Ontario Ministry of  
Natural Resources, Peterborough, ON, Canada*

**Cutting Orthophotography Costs Through  
Partnerships**, Quintin Lang, Project Leader GIS,  
County of Lambton, Wyoming, ON, Canada

**Data Sharing on a Shoestring: Local  
Government Perspective**, Jason Birch, Sr.  
Applications Analyst, City of Nanaimo,  
Nanaimo, BC, Canada

**CivicAccess.ca: Democracy in an Information  
Age and the Need for Free and Open Civic Data**,  
Gabe Sawhney, Co-Founder, Producer and Technical  
Director, [murmur], Toronto, ON, Canada

### GIS DEVELOPMENT Analytical Problems in GIS (CCA) — OCC, Room 3A

*Moderator: Ian J. O'Connell, Senior Instructor and  
Co-ordinator, Geomatics Program, Department of  
Geography, University of Victoria, Victoria, BC, Canada*

**An Anti-Aliasing Algorithm for Calculating  
the Perimeter of Raster Polygons**, Steven  
Prashker, Instructor, Department of Geography  
& Environmental Studies, Carleton University,  
Ottawa, ON, Canada

**Mapping the Effects of the Modifiable Areal  
Unit Problem on Local Measures of Spatial  
Autocorrelation**, Carson Farmer, Masters  
Student, Department of Geography, University  
of Victoria, Victoria, BC, Canada

**Immigrant Settlement Services in Toronto:  
A Case Study on Accessibility for Seven  
Immigrant Groups**, Alejandro Cervantes,  
M.Sc. Student, University of British Columbia,  
Vancouver, BC, Canada

### INFRASTRUCTURE & INTEROPERABILITY Northern Initiatives — OCC, Room 7A

**Canada's Northern Geospatial Infrastructure**,  
Daniel Clavet, Project Officer, Natural Resources  
Canada, Sherbrooke, QC, Canada

**ERS Interferometric CDED Production for  
Northern Canada**, Alexandre Beaulieu, Post-  
Doctoral Fellow, Natural Resources Canada,  
Sherbrooke, QC, Canada

**Mapping Susceptibility to Landslides in  
a Permafrost Environment**, Simon Riopel,  
Geomatics Specialist, Natural Resources Canada,  
Ottawa, ON, Canada

### INTEGRATED CASE STUDY How the City of Sarajevo Reduced the Cost of Infrastructure Locate Requests through Automation — OCC, Room 5B

Geoff Zeiss, Director of Technology, Enterprise,  
Autodesk, Ottawa, ON, Canada

Haris Kurtagic, General Manager, SL-King Inc.,  
Slovenia

### INTEGRATED CASE STUDY Hurricane Katrina — OCC, Room 4B

*Moderator: Matt Ball, Editor, GeoWorld  
magazine, Boulder, CO, USA*

**Mississippi Experience**, Talbot Brooks,  
Director, Center for Interdisciplinary Geospatial  
Information Technologies, Delta State University,  
Cleveland, MS, USA

**GIS and Remote Sensing Implementation  
for Emergency Response During Hurricanes  
Katrina and Rita**, Jason Blackburn, World Health  
Organization Collaborating Center for Remote  
Sensing and GIS for Public Health, Louisiana  
State University, Baton Rouge, LA, USA

**11:00 - 12:30**

## **ATLASES, CARTOGRAPHY & VISUALIZATION**

### **Mountain Cartography and DEMs II (CCA) — GCC, Annex Room**

*Moderator: Tom Patterson, Cartographer, Harpers Ferry Center, U.S. National Park Service, Harpers Ferry, WV, USA*

**A Data Model for Named Features of the Natural Landscape**, Aileen R. Buckley, Cartography Research Group, ESRI, Redlands, CA, USA

**Reconstructing Past Landscapes Using DEM Manipulation Techniques**, Alex Tait, Chief Cartographer, International Mapping Associates, Ellicott City, MD, USA

**Value Added Mapping: 3D Modeling and Photorealistic Representation of Arctic Mountain Landscapes**, Zoran Reljic, Laboratory for Applied Geomatics and GIS Science (LAGGISS), Ottawa, ON, Canada

## **ENTERPRISE INTEGRATION**

### **Web Mapping — OCC, Room 2A**

*Moderator: Patrick Moore, Director, Integral GIS, Inc., Seattle, WA, USA*

**Web Mapping - Past, Present and Future**, Glen Newton, Group Leader (Acting), Research, National Research Council Canada, CISTI, Ottawa, ON, Canada

**Land Information Ontario's Web Services: What You Can Do with Web Mapping**, Greg Bay, Manager, Data Warehousing and Distribution Systems, Ontario Ministry of Natural Resources, Peterborough, ON, Canada

**The Challenges in Implementing Enterprise Systems for Municipalities**, Valerie Kelly, Senior Project Manager, CARIS, Fredericton, NB, Canada

## **GEOSPATIAL DATA**

### **Archiving II (ACMLA) — GCC, Sussex Room**

*Moderator: David Brown, Library and Archives Canada/Bibliothèque et Archives Canada, Ottawa, ON, Canada*

**Digital Record-keeping Practices of GIS Archaeologists Worldwide**, Randy Preston, Research Assistant, The University of British Columbia, Vancouver, BC, Canada

**Building a Digital Photo Library System for the National Air Photo Library**, Karen McEwen, Geomatics Specialist, Natural Resources Canada, Ottawa, ON, Canada

## **GIS DEVELOPMENT**

### **Collaboration Tools — OCC, Room 1A**

*Moderator: Jason Birch, Senior Applications Analyst, City of Nanaimo, Nanaimo, BC, Canada*

**Internet-based Onscreen-Digitizing**, Henri Audirac, President, Cartodata, Zapopan, Jalisco, Mexico

**Using Collaboration Technology to Create Efficiencies and Maximize the Value of Existing Investments in Geospatial Data**, Allister Lundberg, DWF Infrastructure Sr.Product Marketing Manager, Autodesk, San Francisco, CA, USA

## **GIS DEVELOPMENT**

### **Incorporating Real-Time Data Feeds — OCC, Room 3A**

*Moderator: Michael Sawada, Associate Professor of Geomatics and Director Laboratory for Applied Geomatics and GIS Science (LAGGISS), Geography, University of Ottawa, Ottawa, ON, Canada*

**Near Real-Time Dissemination of Geo-Referenced Imagery by an Enterprise Server**, Alison Brown, NAVSYS Corporation, Colorado Springs, CO, USA

**Sensor Server: A Tool for Real-time In-situ Sensor Data**, Patrick Assouad, President, ACG Space Technologies Corp., Ottawa, ON, Canada

**Modernizing the Municipal Geo-Spatial Reference System in British Columbia**, Brad Hlasny, Manager, Geo-Spatial Reference Section, Base Mapping & Geomatic Services, Victoria, BC, Canada

## **GIS & PUBLIC POLICY**

### **Decision Support for Emergencies — OCC, Room 4B**

*Moderator: Ian Gillespie, Geographic Information Officer, Environment Canada, Burlington, ON, Canada*

**Emergency Response and Security Business Issues**, Ian Becking, Manager Geomatics, Public Safety and Emergency Preparedness Canada, Ottawa, ON, Canada

**Meeting Up-to-Date E911 and Disaster Management Geodata Needs**, Mark Sondheim, Manager, Provincial Baseline Atlas, Integrated Land Management Bureau, Victoria, BC, Canada

**Researching the Role of GIS in Emergency Management and Critical Infrastructure Protection**, Brian Klinkenberg, Associate Professor, University of British Columbia, Vancouver, BC, Canada

## **INFRASTRUCTURE & INTEROPERABILITY**

### **Imagery Management and Distribution — OCC, Room 7A**

*Moderator: Quintin Lang, Project Leader GIS, County of Lambton, Wyoming, ON, Canada*

**DIM as an Interoperable Web-Based Digital Image Management System**, Rostam Yazdani, DIM Program Manager, Ministry of Agriculture and Lands, Victoria, BC, Canada

**Creating a Seamless Nationwide Digital Orthophoto Access Service**, Jose Ornelas de Anda, GIS Applications Subdirector, INEGI, Aguascalientes, Ags, Mexico

**High Performance Image Serving with Open Source**, Chris Hodgson, Senior Analyst, Refractions Research, Victoria, BC, Canada

## **INTEGRATED CASE STUDY**

### **National Land and Water Information Service (NLWIS) — OCC, Room 5B**

*Moderator: Kelly Dean, National Land and Water Information Service, Agriculture and Agri-Food Canada, Ottawa, ON, Canada*

**A National Land and Water Information Service**, Susan Till, Assistant Deputy Minister, National Land and Water Information Service, Agriculture and Agri-Food Canada, Ottawa, ON, Canada

**Inside the National Land and Water Information Service**, Peter Schut, Director, Geomatics, National Land and Water Information Service, Agriculture and Agri-Food Canada, Ottawa, ON, Canada

**National Land and Water Information Service Applications**, Bob Parkinson, Outreach and Detailed Business Requirements Manager, National Land and Water Information Service, Agriculture and Agri-Food Canada, Calgary, AB, Canada

**13:30 - 15:00**

## ATLASES, CARTOGRAPHY & VISUALIZATION

### PANEL—Future of Topographic Mapping in Canada (ACMLA) - GCC, Sussex Room

*Moderator: David Jones, Map Librarian, University of Alberta, Edmonton, AB, Canada (ACMLA President)*

**NRCan Perspective**, Jean Cooper, Director General, Mapping Services Branch, Natural Resources Canada, Ottawa, ON, Canada

**ACMLA Perspective**, Colleen Beard, Map Librarian, James A. Gibson Library, Brock University St. Catharines, ON, Canada

**CCA Perspective**, James Boxall, Director, GIS Centre, Dalhousie University, Halifax, NS, Canada

**Commercial Distributor Perspective**, Juliet Atha, Federal Maps, Inc., Toronto, ON, Canada

## ATLASES, CARTOGRAPHY & VISUALIZATION

### Map Design I (CCA) — GCC, Annex Room

*Moderator: Sally Hermansen, Senior Instructor, Department of Geography, University of British Columbia, Vancouver, BC, Canada*

**Eye Movements in Map Comparison - Preliminary Results and Lessons Learned**, Claus Rinner, Department of Geography, University of Toronto, Toronto, ON, Canada

**Smarter Symbols: Smarter Maps**, Edith M. Punt, ESRI, Redlands, CA, USA

**Perception of Symbol Size on Online Maps as a Function of Zoom Factor and Map Density**, Avi Parush, Associate Professor, Human Oriented Technology Laboratory, Department of Psychology, Carleton University, Ottawa, ON, Canada

## ENTERPRISE INTEGRATION

### Decision Support Systems — OCC, Room 4B

*Moderator: Kelly Dean, National Land and Water Information Service, Agriculture and Agri-Food Canada, Ottawa, ON, Canada*

**Managing the Bulk Transmission Grid with GIS**, Patrick Moore, Director, Integral GIS, Inc., Seattle, WA, USA

**The National Geospatial-Intelligence Agency's Palanterra - A secure, Web-enabled Common Operational Picture**, Mark Riccio, National Geospatial-Intelligence Agency (NGA), Bethesda, MD, USA

**Deployment of Service Oriented Architecture for Dynamic Multi-Scale Multi-Temporal Intelligence Analysis**, Henry Kucera, Senior Principal, Swiftsure Spatial Systems Inc, Victoria, BC, Canada

## INFRASTRUCTURE & INTEROPERABILITY

### System Interoperability — OCC, Room 7A

*Moderator: Christopher Wooding, Spatial Vision Group Inc., Gananogue, ON, Canada*

**Maintenance of Enterprise Geospatial Data with Open Standards Based Solutions**, Yao Cui, Sr. Geospatial Data Specialist, Integrated Land Management Bureau, Victoria, BC, Canada

**Spatial ETL: Bringing the Power of Location to Applications**, Don Murray, President, Safe Software Inc., Surrey, BC, Canada

**GPS, Geography Markup Language, OpenGeospatial Web Services and Google Earth**, David Burggraf, Director of Research and Development, Galdos Systems Inc., Vancouver, BC, Canada

## GEOSPATIAL DATA

### Road Network — OCC, Room 1A

*Moderator: Mark Sondheim, Manager, Provincial Baseline Atlas, Integrated Land Management Bureau, Victoria, BC, Canada*

**Updating Statistics Canada's Geographic Framework with Collaborative Road Network Data**, Glen Hohlmann, Geographic Analyst, Statistics Canada, Ottawa, ON, Canada

**The Ontario Road Network**, Tom Malone, Manager, Geographic Information Ontario, Ministry of Natural Resources, Peterborough, ON, Canada

**Multi-Phase Conflation and Maintenance of a Provincial Road/Boundary Network**, Samuel Smith, Senior Analyst, Refractions Research, Victoria, BC, Canada

## GIS DEVELOPMENT

### Open Source Overview — OCC, Room 3A

*Moderator: Peter Pulsifer, Carleton University, Ottawa, ON, Canada*

**Delivery of Geospatial Content through Open Source Web Mapping Technology**, Dave McIlhagga, President, DM Solutions Group, Ottawa, ON, Canada

**A Brief Survey of Open Source GIS**, Paul Ramsey, President, Refractions Research, Victoria, BC, Canada

**Infrastructure Management using Open Source for the Utility, Telecom, and Government Sectors**, Geoff Zeiss, Director of Technology, Autodesk Canada, Ottawa, ON, Canada

**Exploring the Boundaries of Open Source Geospatial: Integration for Communicating and Exploring Environmental Change**, Peter Pulsifer, Carleton University, Ottawa, ON, Canada

## GIS DEVELOPMENT

### Visualization — OCC, Room 2A

*Moderator: Jo Treadwell, Publisher, GeoTec Media, San Francisco, CA, USA*

**Computer Simulation and Visualization of Diesel Plume Using MVS Software**, Hélène Richer, Eng. Associate, Golder Associates Ltd., Montréal, QC, Canada

**Geology Integrated with GIS: Strategies for Development**, Débora Rios, Federal University of Bahia (Brazil), Salvador, BA, Brazil

**First Airborne IFSAR Mapping in Alberta: The Old Man River Project**, Hugh MacKay, Business Development Manager, Intermap Technologies, Ottawa, ON, Canada

**15:30 - 17:00**

## ATLASES, CARTOGRAPHY & VISUALIZATION

### PANEL—Cybercartography: Maps and Mapping in the Information Era — GCC, Sussex Room

*Moderator: Fraser Taylor, Distinguished Research Professor in International Affairs, Geography and Environmental Studies, and the Director of the Geomatics and Cartographic Research Centre, Carleton University, Ottawa, ON, Canada*

**Panelist,** Glenn Brauen, PhD Student & Lead Sound Cluster, Geomatics and Cartographic Research Centre, Ottawa, ON, Canada

**Panelist,** Elvia Martinez Viveros, Centro de Investigación en Geografía y Geomática (CentroGEO), Mexico City, Mexico

**Panelist,** Brian Eddy, PhD Student & Lead Trade Atlas, Geomatics and Cartographic Research Centre, Ottawa, ON, Canada

**Panelist,** Tracey Lauriault, PhD Student - Lead Collaboration and Transdisciplinarity, Carleton University, Ottawa, ON, Canada

**Panelist,** Peter Pulsifer, PhD Student & Lead Antarctica Atlas, Geomatics and Cartographic Research Centre, Ottawa, ON, Canada

**Panelist,** Carmen Reyes, Director, Centro de Investigación en Geografía y Geomática (CentroGEO), Mexico City, Mexico

**Panelist,** Amos Hayes, Technical Manager, Geomatics and Cartographic Research Centre, Carleton University, Ottawa, ON, Canada

## ATLASES, CARTOGRAPHY & VISUALIZATION

### Map Design II (CCA) — OCC, Annex Room

*Moderator: Lori King, Geomatics Analytical Technician/ Cartographer, Ontario Ministry of Natural Resources, Timmins, ON, Canada*

**How Not to Lie with Maps: Some Old Rules for the New GIS Cartographers,** Sally Hermansen, Senior Instructor, University of British Columbia, Vancouver, BC, Canada

**A Framework for Quality Assessment of Web Mapping,** Mike Ballard, Professor, Geographic Information Systems Technologist Program, Algonquin College, Ottawa, ON, Canada

**Interactive 3D Geographic Animation Using Macromedia Flash,** Kris Moulton, Cartography Student, Centre of Geographic Sciences (COGS), Lawrencetown, NS, Canada

## ENTERPRISE INTEGRATION

### Public Safety — OCC, Room 2A

*Moderator: Louise Boily, Chief, Geo-Spatial Information System, Public Health Agency of Canada, Ottawa, ON, Canada*

**Supporting Municipalities Using a Spatial-Temporal GIS for Earthquake Recovery,** Hiroyuk Yamada, Researcher, National Research Institute for Earth Science and Disaster Prevention, Kawasaki-shi, Kanagawa, Japan

**Geovisualization of Opportunity — At and Between Ports-of-Entry,** Fraser Moffatt, Manager - Research and Corporate Statistics, Canada Border Services Agency, Ottawa, ON, Canada

**Development of Spatial Temporal GIS for Disaster Information Management,** Shigeru Kakumoto, Vice Director, National Institute of Earth Science and Disaster Prevention, Kawasaki, Kana, Japan

## GEOSPATIAL DATA

### Elevation Data — OCC, Room 1A

*Moderator: Jeff Clark, Spatial Vision Group, North Vancouver, BC, Canada*

**Digital Elevation Models for the World,** Hugh MacKay, Business Development Manager, Intermap Technologies, Ottawa, ON, Canada

**Validation of CDED Data with ICESat LIDAR,** Alexandre Beaulieu, Post-Doctoral Fellow, Natural Resources Canada, Sherbrooke, QC, Canada

**Cartographic Visualization of Topographic Maps in the Atlas of Canada,** Peter Bruton, Project Officer, Natural Resources Canada, Ottawa, ON, Canada

## GIS DEVELOPMENT

### Geographic Exploration Systems — OCC, Room 5B

*Moderator: Matt Ball, Editor, GeoWorld Magazine, Boulder, CO, USA*

**Panelist,** Bernard Szukalski, Senior Product Manager, ESRI, Redlands, CA, USA

**Panelist,** Michael Jones, CTO, Google Earth, Mountain View, CA, USA

**Panelist,** Vincent Tao, Director, MSN Virtual Earth, Redmond, WA, USA

**Panelist,** Ronnie Yaron, President, Skyline Software Systems, Inc., Chantilly, VA, USA

## GIS DEVELOPMENT

### Open Source Applications — OCC, Room 3A

*Moderator: Dave McIlbagger, President, DM Solutions Group, Ottawa, ON, Canada*

**Developing a Water Monitoring OGC Portal Using Open Source Tools,** Tom Kralidis, Senior Systems Scientist, Environment Canada, Burlington, ON, Canada

**The uDig Open Source Desktop,** Paul Ramsey, President, Refractions Research, Victoria, BC, Canada

**The Atlas of Canada Using Open Source,** Jean-Francois Doyon, Internet Service Development and Systems Support, Natural Resources Canada, Ottawa, ON, Canada

**Enhancing the Delivery of Health Care through Web-based Mapping,** William Bronsema, Sr Applications Specialist, DM Solutions Group, Ottawa, ON, Canada

## INFRASTRUCTURE & INTEROPERABILITY

### International Standards — OCC, Room 7A

**Worldwide Standards Overview,** Sam Bacharach, Executive Director, Outreach and Adoption Program, The Open Geospatial Consortium, Fairfax, VA, USA

**ISO19100 Suite of Standards: A Canadian Implementation Perspective,** Jean Brodeur, Senior Project Officer, Natural Resources Canada, Sherbrooke, QC, Canada

### Standards Implementation Showcase

## INTEGRATED CASE STUDY

### Defence Geomatics — OCC, Room 4B

*Moderator: Pierre Bilodeau, Commanding Officer, Mapping and Charting Establishment, Ottawa, ON, Canada*

**Mapping and Charting Establishment's Support to Canadian Forces Operation ARCHER in Kandahar, Afghanistan,** Y. Michaud, Officer Commanding (OC), Geomatic Support Squadron (GEO SP), Mapping and Charting Establishment, National Defence HQ, Ottawa, ON, Canada

**3-Dimensional Terrain Database (3DTDB) Section**, Glen Cornect, Officer Commanding Digital Production Squadron, Mapping and Charting Establishment, National Defence HQ, Ottawa, ON, Canada

**Collection of High-resolution Digital Stereo Imagery for Rapid Mapping Applications**, Matieu Primeau, Captain, Operations Officer, Geomatics Support Squadron, Mapping and Charting Establishment, National Defence HQ, Ottawa, ON, Canada

## WEDNESDAY, JUNE 21 / MERCREDI 21 JUIN

**08:00 - 09:00**

### Keynote Breakfast

**The Meaning in the Map: Examples from Medical Cartography**, Tom Koch, Adjunct Professor of Geography (medical), University of British Columbia and Adjunct Professor of Gerontology, Simon Fraser University, Vancouver, BC, Canada

**09:00 - 10:30**

### ATLASES, CARTOGRAPHY & VISUALIZATION

#### Planning for the Future (ACMLA) — GCC, Annex Room

*Moderator: Colleen Beard, Map Librarian, James A. Gibson Library, Brock University St. Catharines, ON, Canada*

**When a Library Morphs into a Centre: Geographic Information Management Issues**, James Boxall, Director, GIS Centre, Dalhousie University, Halifax, NS, Canada

**GéoIndex: un nouvel accès aux données géospatiales du Centre d'information géographique et statistique de la Bibliothèque de l'Université Laval**, Stéfano Biondo, Centre Géo/Stat, et Pierre Racine, Étudiant à la maîtrise en géographie, Université Laval, Laval QC, Canada

**Toward a Canadian Digital Information Strategy**, Susan Haigh, Senior Advisor, Transformation, Library and Archives Canada/Bibliothèque et Archives Canada, Gatineau, QC, Canada

### ENTERPRISE INTEGRATION Database Development — OCC, Room 2A

*Moderator: Bob Johnson, Coordinator, GeoBase Secretariat, GeoBase Steering Committee, Ottawa, ON, Canada*

**Database Management Systems: A Platform for Geospatial Applications**, Jean Ihm, Principal Product Manager, Oracle, Nashua, NH, USA

**Optimizing Traditional Vector Mapping Data for Use in a Municipal GIS**, Stephen Perkins, City of Ottawa, Ottawa, ON, Canada

**Technical Architecture for a Municipal Enterprise GIS**, Dave Tracy, Technical Coordinator, City of Ottawa, Ottawa, ON, Canada

### GEOSPATIAL RESEARCH & EDUCATION

#### PANEL—Map Production and Education: What We Do and What We Teach (CCA) — OCC, Room 3A

*Moderator: Lori King, Geomatics Analytical Technician/ Cartographer, Ontario Ministry of Natural Resources, Timmins, ON, Canada*

**Panelist**, Aileen R. Buckley, Cartography Research Group, ESRI, Redlands, CA, USA

**Panelist**, Paul Heersink, Cartographer, Ontario Ministry of Natural Resources, Peterborough, ON, Canada

**Panelist**, Anna Jasiak, Research Geographer, Atlas of Canada, Natural Resources Canada, Ottawa, ON, Canada

**Panelist**, Ian J. O'Connell, Senior Instructor Geomatics, University of Victoria, Victoria, BC, Canada

**Panelist**, Clifford H. Wood, Professor (Retired), Memorial University, Ilderton, ON, Canada

**Panelist**, Patricia Connor, Director, Cartographic Services, The University of Western Ontario, London, ON, Canada

### GIS DEVELOPMENT Location-Based Services — OCC, Room 7A

*Moderator: Bob Parkinson, Outreach and Detailed Business Requirements Manager for the National Land and Water Information Service, Agriculture and Agri-Food Canada, Calgary, AB, Canada*

**Uniting Web Services, Open Source Systems and OGC's OpenLS Standards to Deploy Location-Based Services**, Geovane Magalhaes, Technology Innovation Manager, CPqD - Telecom & IT Solutions, Campinas, SP, Brazil

**Implementing An Enterprise-Wide AVL Application**, Brent Gannon, Manager Operations, TELUS Geomatics, Edmonton, AB, Canada

**Implementing a Cultural Assets Guide**, Sangho Yeon, Professor, P.Eng, Semyung University, Jecheon-SiChungbuk, South Korea

### GIS DEVELOPMENT

#### Web 2.0 a Platform for Geomatics and The Atlas of Canada — OCC, Room 1A

*Moderator: Cameron Wilson, Project Manager, Atlas of Canada, Natural Resources Canada, Ottawa, ON, Canada*

**Web 2.0 Business Models — Opportunities and Challenges**, Max Bottoni, Principal, Sierra Systems, Ottawa, ON, Canada

**GlobeXplorer Web 2.0 Industry Solutions and Case Studies**, Paul Smith, COO, GlobeXplorer, Walnut Creek, CA, USA

**Geomatics and Web 2.0**, Mike Adair, Geospatial Infrastructure Architect, Natural Resources Canada, Ottawa, ON, Canada

**Atlas of Canada Prototype Based on Web 2.0 Technologies and Business Models**, Dave McIlhagga, President, DM Solutions Group, Cameron Wilson, Peter Morton, Natural Resources Canada, Ottawa, ON, Canada

### GIS & PUBLIC POLICY

#### Mapping Issues in the Geography of Health (CCA) — OCC, Room 4B

*Moderator: Scott Mitchell, Assistant Professor, Department of Geography & Environmental Studies, Carleton University, Ottawa, ON, Canada*

**Open Source Online Mapping as an Innovative Cost-Effective Approach for Health Services Planning and Delivery**, Malcolm Anderson, PhD candidate, Department of Physical Medicine and Rehabilitation, Queen's University, Kingston, ON, Canada

CONTINUED ON PAGE 19

**SATURDAY / SAMEDI**

**10:00 - 15:00**

**Steam Train To Wakefield/  
Train à vapeur vers Wakefield**

All aboard for a scenic expedition of a lifetime! In just five hours, take in the beauty of the Gatineau countryside on a journey on the award-winning Hull-Chelsea-Wakefield Steam Train. Go back to a time when the train was one of the only ways to travel. En voiture pour une excursion inoubliable! En cinq heures seulement, admirez la beauté de la nature en parcourant les collines de la Gatineau à bord du train à vapeur Hull-Chelsea-Wakefield; attrait touristique qui a reçu les plus hauts honneurs de son industrie. Remontez au temps où le train constituait l'un des seuls moyens de voyager.

**SUNDAY / DIMANCHE**

**16:30 - 18:30**

**CCA Orienteering Event/  
Course d'orientation de l'ACC**

Take to the field to practice your map-reading skills. Orienteers will be given a map and set free on the University of Ottawa campus. Pit your skills against others in a friendly competition.

Rendez-vous sur le terrain pour pratiquer vos habiletés à lire une carte. Les coureurs d'orientation recevront une carte et seront relâchés sur le campus de l'Université d'Ottawa. Testez vos capacités contre les autres lors d'une compétition amicale.

**18:30 - 21:00**

**CCA/ACMLA Icebreaker Reception/  
Réception de brise-glace**

University of Ottawa / Université d'Ottawa  
509 Arts Hall, 70 Laurier Avenue East

**MONDAY / LUNDI**

**18:00 - 00:30**

**The Atlas of Canada Gala Dinner and Dance/  
Dîner de gala et soirée dansante de l'Atlas du Canada**

Canadian Museum of Civilization / Musée canadien des civilisations

**The Atlas of Canada Turns 100!/  
L'Atlas du Canada a 100 ans!**



A special evening is planned to celebrate the 100th Anniversary of The Atlas of Canada. The event will take place in the magnificent Grand Hall. The Gala will include dinner, distinguished keynote speakers, and an evening of dancing overlooking the Ottawa River and Parliament Hill.

OCC = Ottawa Congress Centre/Centre des congrès d'Ottawa

Une soirée exclusive est prévue afin de célébrer le 100e anniversaire de l'Atlas du Canada. L'événement se tiendra dans la Grande Galerie. Le gala comprendra le dîner, la présence de conférenciers d'honneur ainsi qu'une soirée au cours de laquelle vous pourrez danser tout en admirant la merveilleuse vue qu'offre la rivière des Outaouais et la Colline du Parlement.

**Gala Dinner Keynote/  
Conférencier-invité au dîner de gala**

Rex Murphy is a social commentator and editorial journalist with weekly television commentary on *The National Magazine*. Described as *The National's* "star opinion jockey," Rex Murphy presents informed, entertaining and fiercely witty commentary on current events and noteworthy subjects.



Rex Murphy, commentateur social et journaliste éditorial; à chaque semaine, il participe à l'émission télévisée de la SRC, *The National*. Décrit comme étant la « star de l'opiniâtreté » du *The National*, Rex Murphy est connu pour ses commentaires fondés, divertissants et pleins d'esprit sur l'actualité et sur d'autres sujets intéressants.

**TUESDAY / MARDI**

**12:00 - 13:30**

**ACMLA Annual General Meeting—  
GCC, Sussex Room**

**16:00 - 18:00**

**Exhibit Reception and Wine Tasting/  
Réception et dégustation donnée lors de l'exposition**

SPONSORED BY: **BAE SYSTEMS**

Join the exhibitors for an evening reception with light hors d'oeuvres and an Ontario wine tasting.

Joignez-vous aux exposants lors d'une soirée où l'on vous proposera de petits hors-d'œuvre accompagnés d'une dégustation de vins de l'Ontario.

**18:00 - 20:00**

**ACMLA/CCA Reception, Library and Archives Canada Book Launch Reception  
ACACC/ACC, Lancement de livre de Bibliothèque et Archives Canada  
Congress Centre Terrace/Terrasse du Centre des congrès**

Members of ACMLA and CCA are invited to the launch of the new publication *Terra Nostra: The Stories Behind Canada's Maps, 1550-1950*, written by senior archivist Jeffrey S. Murray of Library and Archives Canada.

Les membres de l'ACACC et de l'ACC sont invités au lancement de *Terra Nostra. Les cartes du Canada et leurs secrets, 1550-1950*, rédigé par Jeffrey S. Murray, archiviste principal à Bibliothèque et Archives Canada.



**WEDNESDAY / MERCREDI**

**11:00 - 13:30**

**CCA Annual General Meeting and Awards Luncheon —  
GCC, Centennial Room (Fifth Floor)**

**THURSDAY / JEUDI**

**09:00 - 12:00**

**Gatineau Preservation Centre/  
Centre de préservation de Gatineau**

This centre houses all of the National Archives of Canada's preservation laboratories. Storage vaults accommodate a significant portion of Canada's archival heritage.

Tous les laboratoires de préservation de Bibliothèque et Archives Canada se trouvent dans ce centre. Les chambres d'entreposage contiennent une part importante du patrimoine documentaire canadien.

**12:30 - 16:30**

**Gatineau Satellite Receiving Station/  
Station de réception de Gatineau**

The Gatineau Satellite Station receives data from the following Earth observation satellites: ERS, ENVISAT, Landsat, RADARSAT-1.

La station de réception de Gatineau reçoit des données des satellites d'observation de la Terre suivants : ERS, ENVISAT, Landsat, RADARSAT-1.

**17:30 - 21:00**

**Horseback Riding in the Gatineau Hills/  
Équitation à travers les collines de la Gatineau**

Captiva Farms offers acres of trails through panoramic mountains and hillsides of the Gatineau.

Captiva Farms offre des acres de sentiers à travers les montagnes panoramiques et les collines de la Gatineau.

# CONFERENCE AT A GLANCE

**GeoTEC**  
EVENT 2006

## WORKSHOPS / ATELIERS

**Saturday, June 17, 2006 / Samedi 17 juin**

**Registration (17:00 - 19:00)**

**Full Day / Journée Complète (09:00 - 17:00)**

**ACMLA — Geospatial Map Cataloguing - University of Ottawa, Morisset Library, Room 211**

**Sunday, June 18, 2006 / Dimanche 18 juin**

**Registration (07:30 - 17:00)**

**Full Day / Journée Complète (09:00 - 17:00)**

**ACMLA — GIS Reference Services - Carleton University, MacOdrum Library, Room 102**

**Best Practices for Developing Geospatial Information Models - OCC, Room 1A**

**eGovernment - Planning, Policy and the Portal - OCC, Room 5A**

**GIS Modeling - OCC, Room 4A**

**Integrating Geomatics and Photorealistic Geovisualization - University of Ottawa, LAGGIS, 60 University St.**

**Intro. to Open Source GIS - OCC, Room 2A**

**Metadata Implementation Strategies - OCC, Room 6A**

**OGC Web Services - OCC, Room 3A**

## CCA Half-Day Workshops

**Morning / Avant-midi (09:00 - 12:30)**

**Managing Geographic Names in a GIS - Carleton University, Loeb A237**

**Afternoon / Après-midi (13:30 - 17:00)**

**Planning for and Implementing Cartographic Representations in ArcGIS 9.2 - Carleton University, Loeb A220**

## Vendor Seminars / Conférences de Fournisseur

**Monday, June 19 /**

**Lundi 19 juin**

09:00 - 09:30

09:30 - 10:00

10:00 - 10:30

10:30 - 11:00

11:00 - 11:30

11:30 - 12:00

12:00 - 13:00

13:00 - 13:30

13:30 - 14:00

14:00 - 14:30

14:30 - 15:00

15:00 - 15:30

15:30 - 16:00

16:00 - 16:30

16:30 - 17:00

**Tuesday, June 20 / Mardi**

**20 juin**

NRCan - CSRS

BAE Systems

ESRI Canada

Cansel Survey Equip

Spatial Geo Link

Kheops Technologies

**Wednesday, June 21 /**

**Mercredi 21 juin**

ESRI Canada

MapInfo

Cansel Survey Equip

Spatial Geo Link

Intergraph

PCI Geomatics

NRCan - CSRS

GeoConnections

MDA Geospatial

MapText, Inc.

MapInfo

ER Mapper

Optech

CARIS

PCI Geomatics

Intermap

MapInfo

Linnet Systems

ESRI Canada

Cansel Survey Equip.

MDA Geospatial

Spatial Geo Link

PCI Geomatics

## SESSIONS / SÉANCES

**Monday, June 19, 2006 / Lundi 19 juin**

OCC, Hall E

Welcome and Introduction / Mot de bienvenue et introduction

OPENING KEYNOTE—Ambient Findability: Mapping the Future Present. Peter Morville, President, Semantic Studios, Ann Arbor, MI, USA

Break

OCC, Hall E

PANEL/Réunion d'experts—Geospatial Technology Outlook

Lunch Break

GCC, Sussex Room

GIS DEVELOPMENT  
Business Geographics

INTEGRATED CASE STUDY  
CLAIMaps and Geology  
Ontario

INFRAStructure &  
INTEROPERABILITY  
Data Access

Break in the Exhibit Hall

The Atlas of Canada Gala Dinner and Dancing - Museum of Civilization

Registration 08:00 - 17:00

Exhibits 14:00 - 18:00

OCC, Room 4B/5B

PANEL/Réunion d'experts—National Atlases: Now and in the Future

ENTERPRISE INTEGRATION  
Transforming to IT  
Infrastructure

ENTERPRISE INTEGRATION  
System Integration Examples

GEOSPATIAL DATA  
Parcel Mapping

GEOSPATIAL DATA  
Cross-Border Census  
Collaboration

ATLASES, CARTOGRAPHY &  
VISUALIZATION  
Regional Atlases (CCA)

ATLASES, CARTOGRAPHY &  
VISUALIZATION  
History of Cartography  
(CCA/ACMLA)

ATLASES, CARTOGRAPHY &  
VISUALIZATION  
Reporting Framework

ATLASES, CARTOGRAPHY &  
VISUALIZATION  
Immersive Environments

ATLASES, CARTOGRAPHY &  
VISUALIZATION  
Past and Present Atlas

ATLASES, CARTOGRAPHY &  
VISUALIZATION  
Atlas Futures

OCC, Room 2A

OCC, Room 1A

OCC, Room 4B

OCC, Room 5B

OCC, Room 7A

OCC, Room 7A



Tuesday, June 20, 2006 / Mardi 20 juin

09:00 - 10:30	GCC, Susssex Room GEOSPATIAL DATA Archiving I (ACMLA)	GCC, Annex Room ATLASES, CARTOGRAPHY & VISUALIZATION Mountain Cartography and DEMs I (CCA)	OCC, Room 1A GEOSPATIAL DATA Data Sharing Agreements	OCC, Room 2A ATLASES, CARTOGRAPHY & VISUALIZATION The Future of Internet Mapping (ICA Commission on Maps and the Internet)	OCC, Room 3A GIS DEVELOPMENT Analytical Problems in GIS (CCA)	OCC, Room 4B INTEGRATED CASE STUDY Hurricane Katrina	OCC, Room 5B INTEGRATED CASE STUDY How the City of Sarajevo Reduced the Cost of Infrastructure Locate Requests through Automation	OCC, Room 7A INFRASTRUCTURE & INTEROPERABILITY Northern Initiatives
10:30 - 11:00	Break in the Exhibit Hall							
11:00 - 12:30	GEOSPATIAL DATA Archiving II (ACMLA)	ATLASES, CARTOGRAPHY & VISUALIZATION Mountain Cartography and DEMs II (CCA)	GIS DEVELOPMENT Collaboration Tools	ENTERPRISE INTEGRATION Web Mapping	GIS DEVELOPMENT Incorporating Real-Time Data Feeds	GIS & PUBLIC POLICY Decision Support for Emergencies	INTEGRATED CASE STUDY NLWS	INFRASTRUCTURE & INTEROPERABILITY Imagery Management and Distribution
12:30 - 13:30	Lunch Break							
13:30 - 15:00	ATLASES, CARTOGRAPHY & VISUALIZATION PANEL—Future of Topographic Mapping in Canada (ACMLA)	ATLASES, CARTOGRAPHY & VISUALIZATION Map Design I (CCA)	GEOSPATIAL DATA Road Network	GIS DEVELOPMENT Visualization	GIS DEVELOPMENT Open Source Overview	ENTERPRISE INTEGRATION Decision Support Systems		INFRASTRUCTURE & INTEROPERABILITY System Interoperability
15:00 - 15:30	Break in the Exhibit Hall							
15:30 - 17:00	ATLASES, CARTOGRAPHY & VISUALIZATION PANEL—Cybercartography: Maps and Mapping in the Information Era	ATLASES, CARTOGRAPHY & VISUALIZATION Map Design II (CCA)	GEOSPATIAL DATA Elevation Data	ENTERPRISE INTEGRATION Public Safety	GIS DEVELOPMENT Open Source Applications	INTEGRATED CASE STUDY Defence Geomatics	GIS DEVELOPMENT Geographic Exploration Systems	INFRASTRUCTURE & INTEROPERABILITY International Standards
16:00 - 18:00	Exhibit Hall Reception & Wine Tasting (Sponsored by BAE Systems)							
18:00 - 20:00	Terra Nostra Book Launch for ACMLA/CCA Members							

Wednesday, June 21, 2006 / Mercredi 21 juin

08:00 - 09:00	OCC, Hall E Keynote Breakfast: The Meaning in the Map: Examples from Medical Cartography - Tom Koch, Adjunct Professor of Geography (medical), University of British Columbia and Adjunct Professor of Gerontology, Simon Fraser University, Vancouver, BC, Canada							
09:00 - 10:30	GCC, Susssex Room GIAC LEADERS FORUM	GCC, Annex Room ATLASES, CARTOGRAPHY & VISUALIZATION Planning for the Future (ACMLA)	OCC, Room 1A GIS DEVELOPMENT Web 2.0 a Platform for Geomatics and the Atlas of Canada	OCC, Room 2A ENTERPRISE INTEGRATION Database Development	OCC, Room 3A GEOSPATIAL RESEARCH & EDUCATION PANEL Map Production and Education: What We Do and What We Teach (CCA)	OCC, Room 4B GIS & PUBLIC POLICY Mapping Issues in the Geography of Health (CCA)	OCC, Room 5B INTEGRATED CASE STUDY On-Demand Mapping at the Innovation Acceleration Centre (IAC) within Natural Resources Canada (NRCAN), International Division	OCC, Room 7A GIS DEVELOPMENT Location-Based Services
10:30 - 11:00	Break in the Exhibit Hall							
11:00 - 12:30		INTEGRATED CASE STUDY Hands-On: Build an Interactive Online Atlas with the Cybercartographic Atlas Framework	GIS & PUBLIC POLICY Climate Change	ENTERPRISE INTEGRATION Collaborative Resource Management	GIS & PUBLIC POLICY Public Health	GIS & PUBLIC POLICY Contemporary and Historical Geographies of the Canadian Mérids	INFRASTRUCTURE & INTEROPERABILITY Data Distribution Issues	GIS DEVELOPMENT Imagery Analysis
12:30 - 13:30	Lunch Break							
13:30 - 15:00		ATLASES, CARTOGRAPHY & VISUALIZATION PANEL—Atlas of Canada: Future Opportunities	ATLASES, CARTOGRAPHY & VISUALIZATION User-Centered Design and Development (CCA)	GIS & PUBLIC POLICY PANEL—PC-IDEA	GEOSPATIAL RESEARCH & EDUCATION Cartography and GIS: Human Dimensions (CCA)	GEOSPATIAL DATA Geographic Names	INFRASTRUCTURE & INTEROPERABILITY Canadian and U.S. Partnerships	GIS DEVELOPMENT Analytical Approaches
15:30 - 17:00						GEOSPATIAL RESEARCH & EDUCATION Geospatial Career Opportunity Panel		

Thursday, June 22, 2006 / Jeudi 22 juin

GIAC Geomatics Leaders Forum (see pg. 18 for schedule)

Post-Conference Tours / Visites organisées après la conférence

Gatineau Preservation Centre - 09:00 - 12:00

Gatineau Satellite Receiving Station - 12:30 - 16:30

Horseback Riding - 17:30 - 21:00

# 2006 GEOMATICS LEADERS FORUM / FORUM DES LEADERS EN GÉOMATIQUE 2006

Geomatics Industry  
Association of  
Canada



L'Association Canadienne  
des Entreprises  
de Géomatique

The annual GIAC GEOMATICS LEADERS FORUM provides a unique opportunity for industry and government representatives to exchange views and develop closer working relationships. This year's Forum will feature presentations by trendsetters in the spatial information business, several international speakers, as well as updates on Canadian federal programs of interest to the geomatics community. The forum will be held at the Government Conference Centre.

Le Forum annuel des leaders en géomatique offrira une occasion unique aux représentants de l'industrie et du gouvernement d'échanger leurs visions et de créer des relations de travail plus étroites. Cette année, le forum mettra en vedette des exposés de la part de faiseurs de tendances et de plusieurs conférenciers de renommée internationale ainsi que les mises à jour des programmes fédéraux qui pourraient intéresser les gens provenant du milieu de la géomatique. Le forum se tiendra au Centre de conférences du gouvernement.

**WEDNESDAY, JUNE 21/  
MERCREDI 21 JUIN**

**9:30 - 9:50**

**Refreshment Break / Pause santé**

SPONSORED BY:  **ESRI Canada** ★

**9:50 - 12:00**

**Serving a Rapidly Changing Spatial Information Market / Servir un marché de l'information spatiale en évolution rapide**

**The Changing Role of GIAC**, Alex Miller, GIAC Chairman

**Building the Canadian Geospatial Data**

**Infrastructure**, Irwin Itzkovitch, Assistant Deputy Minister, Earth Sciences Sector, Natural Resources Canada, Ottawa, ON, Canada

**The U.S. Experience—Building the Geospatial One-Stop**, Hank Garie, Executive Director, Geospatial One-Stop, U.S. Department of the Interior, Reston, VA, USA

**Microsoft Virtual Earth: New Horizons in the Spatial Information Business**, Vincent Tao, Director, MSN Virtual Earth, Microsoft, Redmond, WA, USA

**India's National Spatial Data Infrastructure Plans and Progress**, Maj. Gen. M. Gopal Rao, Surveyor General of India, Department of Science and Technology, Government of India, New Delhi, India

**12:00 - 13:25**

Luncheon Speaker, Michael Jones, Chief Technology Officer, Google Earth, Mountain View, CA, USA

SPONSORED BY:

 **TELUS**  
the future is friendly™

 **terrapoint**  
THE SPATIAL INFORMATION CONNECTION

**13:25 - 15:30**

**National Geomatics Initiatives / Initiatives Nationales en Géomatique**  
*Moderator, Alex Miller, GIAC Chairman*

**The National Land and Water Information Service — Current Status and Future Plans**, Susan Till, Assistant Deputy Minister, National Land and Water Information Service, Agriculture and Agri-Food Canada, Ottawa, ON, Canada

**Geomatics Programs and Activities at the National Level in Canada**, Jeff Labonte, Director General, Information Management and Dissemination Branch, Natural Resources Canada, Ottawa, ON, Canada

**Cooperation in the Development and Maintenance of the National Road Network Data Set**, Gordon Deecker, Director, Geography Division, Statistics Canada, Ottawa, ON, Canada

**Defence Production of Digital Geospatial Information for Military Applications Worldwide**, LCol. Pierre Bilodeau, Commanding Officer, National Defence Mapping and Charting Establishment, Department of National Defence, Ottawa, ON, Canada

**15:30 - 16:00**

**Refreshment Break / Pause santé**

SPONSORED BY:

 **NAVTEQ**™  **PCI Geomatics**

**16:00 - 17:30**

**New Market Directions / Évolution du Marché**

**Where the Worldwide Remote Sensing Market is Heading**, Shawana Johnson, President, Global Marketing Insights, Inc., Cleveland, OH, USA

**The Impact of Open Geospatial Consortium (OGC) Standards on Spatial Data Infrastructure (SDI) Development Worldwide**, Robert Moses, Director, Open Geospatial Consortium and President, PCI Geomatics, Richmond Hill, ON, Canada

**Location-Based Services — Poised for Tremendous Growth**, David Williams, CEO, E911-LBS Consulting, Wilton, CT, USA

**17:30 - 20:30**

**Networking Reception and Dinner**

Provinces Ballroom, The Westin Ottawa

Guest Speaker: The Honourable Gary Lunn, Minister of Natural Resources, Ottawa, ON, Canada

SPONSORED BY:

 **INTERGRAPH**

**THURSDAY, JUNE 22/  
JEUDI 22 JUIN**

**8:25 - 10:30**

**National Geomatics Policy Workshop / Atelier sur les politiques nationales relatives à la géomatique**

*Moderator, Jim Huff, GIAC Vice-Chairman*

**GeoConnections: What We've Heard, How We've**

**Responded and Where We're Going**, Jeff Labonte, Director General, Information Management and Dissemination Branch, Natural Resources Canada, Ottawa, ON, Canada

**Geomatics in Infrastructure Applications**, Tony Varriano, Director General, Issues Management, Program Operations Branch, Infrastructure Canada, Ottawa, ON, Canada

**SDI and Critical Infrastructure Databases**, Jean Cooper, Director General, Mapping Services Branch, Natural Resources Canada, Ottawa, ON, Canada

**10:00 - 10:30**

**Refreshment Break / Pause santé**

SPONSORED BY:

 **NSCC**



**10:30 - 12:00**

Round Table Discussion — Implementing the CGDI

**12:00 - 13:30**

Luncheon Speaker, Thongchai Charupatt, Director, Geo-Informatics and Space Technology Development Agency, Royal Thai Government, Bangkok, Thailand

SPONSORED BY:

 **KIM Geomatics Corporation**

**13:30 - 14:00**

**The Environmental Emergency Management System**, Mary-Ann Spicer, Manager, Response, Environmental Emergencies Program, Environment Canada, Ottawa, ON, Canada

**14:00 - 14:30**

**Enhancing and Supporting Public Health and Emergency Management in Canada Using GIS**, Louise Boily, Manager, Geo-Spatial Information System and CBRN Scientific Information, Public Health Security Centre for Emergency Preparedness and Response, Public Health Agency of Canada, Ottawa, ON, Canada

**14:30 - 15:00**

**Refreshment Break / Pause santé**

SPONSORED BY:  **ESRI Canada** ★

**15:00 - 16:30**

**Round Table Discussion — Engaging the Key Stakeholder Communities / Table ronde : Encourager la participation des principaux groupes d'intervenants**

**16:30 - 17:00**

**Wrap-up / Synthèse**

Registration for the GIAC Geomatics Leaders Forum is separate from the GeoTec Event registration fee. You will need to register for both if you would like to attend both.

L'enregistrement pour le forum des Chefs de GIAC Geomatics est séparé des honoraires d'enregistrement d'événement de GeoTec. Vous devrez vous inscrire à tous les deux si vous voudriez vous occuper de tous les deux.

**CONTINUED FROM PAGE 14**

**British Columbia Atlas of Mortality 1989-2002**, John J. Fowler, Senior Lab Instructor, Department of Geography, University of Victoria, Victoria, BC, Canada

**Predicting Outbreaks: A Spatial Risk Assessment of West Nile Virus in British Columbia**, Brian Klinkenberg, Associate Professor, University of British Columbia, Victoria, BC, Canada

**INTEGRATED CASE STUDY**

**On-Demand Mapping at the Innovation Acceleration Centre (IAC) within Natural Resources Canada (NRCan), International Division — OCC, Room 7A**

Sylvain Lemieux, Director of R&D, GeoCapacity Solutions, PCI Geomatics, Gatineau, QC, Canada

**11:00 - 12:30**

**ENTERPRISE INTEGRATION**

**Collaborative Resource Management — OCC, Room 2A**

*Moderator: Peter Schut, Director, Geomatics, National Land and Water Information Service, Agriculture and Agri-Food Canada, Ottawa, ON, Canada*

**Great Lakes Information Network**, Pete Giencke, Program Specialist, Data and Information Management Group, Great Lakes Commission, Ann Arbor, MI, USA

**The RésEau Water Portal**, Sarah Hall, Environment Canada, Dartmouth, NS, Canada

**National Forest Information System**, Brian Low, Geospatial Scientist, Canadian Forest Service, Victoria, BC, Canada

**GIS DEVELOPMENT**

**Imagery Analysis — OCC, Room 7A**

*Moderator: Jody Jeffrey, Marketing Manager, PCI Geomatics, Richmond Hill, ON, Canada*

**Kernel-based Statistical Learning for Individual Tree Recognition in Forest Inventory**, Marek Zaremba, Professor, Université du Québec, Gatineau, QC, Canada

**A GIS and Remote Sensing Based Analysis in Land Use Change Using Asymmetric Relation Analysis Method**, Jing Wang, GIS Specialist, DMTI Spatial Inc., Markham, ON, Canada

**Merging Landsat TM Thermal-IR band With Higher-resolution Reflective Bands**, Linhai Jing, York University, North York, ON, Canada

**GIS & PUBLIC POLICY**

**Climate Change — OCC, Room 1A**

**Flood Risk Modeling for Storm Surge Events and Long term Sea-level Rise**, Tim Webster, Research Scientist, Centre of Geographic Sciences (COGS), Lawrencetown, NS, Canada

**Web-based Spatial Decision Support System for River Runoff Prediction**, Lei Wang, Department of Geography, York University, Toronto, ON, Canada

**GIS & PUBLIC POLICY**

**Contemporary and Historical Geographies of the Canadian Métis — OCC, Room 3A**

**Towards a Historical Geography of the Métis Nation: GIS and Potential Mapping of Surnames**, Frank Tough, Professor, Native Studies, University of Alberta, AB, Canada

**Three Miles to 1 inch Sectional Maps: A Source for Reconstruction of the Historical Geography of the Métis**, Erik Ellehoj, University of Alberta, AB, Canada

**Manitoba Metis Harvesting Initiative: Land Use and Occupancy Mapping**, Al Benoit, Senior Policy Advisor, Manitoba Metis Federation, Winnipeg, MB, Canada

**GIS & PUBLIC POLICY**

**Public Health — OCC, Room 4B**

*Moderator: Tom Koch, Adjunct Professor of Geography (medical), University of British Columbia and Adjunct Professor of Gerontology, Simon Fraser University, Vancouver, BC, Canada*

**GIS-Based Methodologies for Modeling Anthrax Distribution in North America**, Jason Blackburn, World Health Organization Collaborating Center for Remote Sensing and GIS for Public Health, Louisiana State University, Baton Rouge, LA, USA and Bob Parkinson, Agriculture and Agri-Food Canada, Calgary, AB, Canada

**Human and Animal Disease Surveillance Systems**, Valerie Rice, Ph. D, MPH, Scientific Technologies Corporation, Tucson, AZ, USA

**The Use of GIS in Health Care at the Community Geomatics Centre**, Sault Ste. Marie, Ontario, Paul Beach, Manager, Community Geomatics Centre, Sault Ste. Marie Innovation Centre, Sault Ste. Marie, ON, Canada

**INFRASTRUCTURE & INTEROPERABILITY**

**Data Distribution Issues — OCC, Room 5B**

*Moderator: Dave Tracy, Project Manager for Enterprise CADD/GIS Technical Support Services, City of Ottawa, Ottawa, ON, Canada*

**Geospatial Interoperability: Some Rules to Live By**, Raphael Sussman, Manager, Land Information Ontario, Ontario Ministry of Natural Resources, Peterborough, ON, Canada

**GeoBase Principles, Policies and Procedures**, Bob Johnson, Coordinator, GeoBase Secretariat, GeoBase Steering Committee, Ottawa, ON, Canada

**INTEGRATED CASE STUDY**

**Hands-On: Build an Interactive Online Atlas with the Cybercartographic Atlas Framework — GCC, Annex Room**

*Moderator: Fraser Taylor, Distinguished Research Professor in International Affairs, Geography and Environmental Studies, and the Director of the Geomatics and Cartographic Research Centre, Carleton University, Ottawa, ON, Canada*

Amos Hayes, Geomatics and Cartographic Research Centre, Carleton University, Ottawa, ON, Canada

Jean-Pierre Fiset, Carleton University, Ottawa, ON, Canada

Sébastien Caquard, Post-Doctoral Fellow, Carleton University, Ottawa, ON, Canada

Peter Pulsifer, Ph.D. Student & Lead Antarctica Atlas, Geomatics and Cartographic Research Centre, Ottawa, ON, Canada

**13:30 - 15:00**

**ATLASES, CARTOGRAPHY & VISUALIZATION**

**PANEL—Atlas of Canada: Future Opportunities — GCC, Annex Room**

*Moderator: Cameron Wilson, Project Manager, Atlas of Canada, Natural Resources Canada, Ottawa, ON, Canada*

**Panelist,** Jean Thie, Executive Director, Canadian Institute of Geomatics, Ottawa, ON, Canada

**Panelist,** Fraser Taylor, Distinguished Research Professor in International Affairs, Geography and Environmental Studies, and the Director of the Geomatics and Cartographic Research Centre, Carleton University, Ottawa, ON, Canada

**Panelist,** Denis Hains, Director, GeoAccess Division, Natural Resources Canada, Ottawa, ON, Canada

**Panelist,** Dave McIlhagga, President, DM Solutions Group, Ottawa, ON, Canada

## ATLASES, CARTOGRAPHY & VISUALIZATION

### User-Centered Design and Development (CCA)

**Applying UCD in Cyber-Cartography: The Emergence of User Interface Concepts and Designs,** Shamima Khan, Human Oriented Technologies Lab, Carleton University, Ottawa, ON, Canada

**Usability and the National Atlas of the United States of America,** Jay Donnelly, National Atlas of the United States of America, Reston, VA, USA

**A Case Study, Integrating Topographic Maps Into the Atlas of Canada,** Eric Kramers, Senior Project Officer, Natural Resources Canada, Ottawa, ON, Canada

## GEOSPATIAL DATA

### Geographic Names — OCC, Room 4B

*Moderator: Grace Welch, Associate University Librarian, University of Ottawa, Ottawa, ON, Canada*

**Geoname Management in a Bilingual Context: The Ontario Experience,** Andre Lapierre, Assistant Dean and Secretary of the Faculty, University of Ottawa, Ottawa, ON, Canada

**The Geometry of Geographical Names,** Ivy Rose, Project Leader, Natural Resources Canada, Ottawa, ON, Canada

**Accessing Geographical Names Using the Open Geospatial Consortium International Standard,** André Mainville, Project Leader, Natural Resources Canada, Ottawa, ON, Canada

## GEOSPATIAL RESEARCH & EDUCATION

### Cartography and GIS: Human Dimensions (CCA) — OCC, Room 3A

*Moderator: Byron Moldofsky, Cartographer and GIS Analyst, Department of Geography, University of Toronto, Toronto, ON, Canada*

**The Use of Remote Sensing and GIS for Geo-Archaeology Mapping in Indonesia: Cultural Mapping Experience,** Priyadi Kardono, Head of Geomatic Research Division, National Coordinating Agency for Survey and Mapping (BAKOSURTANAL), Jakarta, Indonesia

**The 1855 Map of Welland City, and How Merritton Came to Be,** Alun Hughes, Associate Professor, Department of Geography, Brock University, St. Catharines, ON, Canada

**Using Cartography as a Teaching Tool for Social Studies, Geography, History and Economics,** Paul Beullac, B&B Publishing, Montreal, QC, Canada

**Charting a Poetic Cartography Across Canada: Navigating an Emotional Landscape of Mourning,** Michael J. Coulis, M.A. candidate, Department of Adult Education and Counselling Psychology, Ontario Institute for Studies in Education, Toronto, ON, Canada

## GIS DEVELOPMENT

### Analytical Approaches — OCC, Room 7A

**GIS-based Box-counting Fractal Model on Characterizing Mineral Components,** Zhijiang Wang, Ph.D. Candidate, York University, Toronto, ON, Canada

**Locational Variables for Property Valuation in the City of Calgary,** Matthew Reid, MSc. Candidate, University of Calgary, Calgary, AB, Canada

## GIS & PUBLIC POLICY

### PANEL—PC-IDEA — OCC, Room 2A

**Advances and Perspectives of the Chilean SDI,** Colonel Luis A. Alegría Matta, Director, Military Instituto Geográfico, Santiago, Chile

**Advances and Perspectives of the Mexican SDI,** Francisco Antonio Hansen Albites, Executive Secretary of PC-IDEA, Instituto Nacional de Estadística Geografía e Informática, Mexico City, Mexico

**Advances and Perspectives of the Cuban SDI,** Colonel Eloy Luis Alum Ortiz, Director General, Oficina Nacional de Hidrografía y Geodesia, Havana, Cuba

## INFRASTRUCTURE & INTEROPERABILITY

### Canadian and U.S. Partnerships — OCC, Room 5B

*Moderator: Paula Rojas, CGDI Content Coordinator, GeoConnections, Ottawa, ON, Canada*

**U.S. and Canadian Joint Pilot Projects to Advance Spatial Data Infrastructure,** J. Milo Robinson, Coordinator, Federal Geographic Data Committee, Reston, VA, USA

**Gulf of Maine Project,** Dean Gadoury, Product Manager, DM Solutions Group, Ottawa, ON, Canada

**Mapping Infectious Disease,** Eddie Oldfield, Director, New Brunswick Lung Association, Fredericton, NB, Canada

**15:30 - 17:00**

## GEOSPATIAL RESEARCH & EDUCATION

### Geospatial Career Opportunities Panel — OCC, Room 4B

*Moderator: Brian Klinkenberg, Associate Professor, University of British Columbia, Vancouver, BC, Canada*

**GISJobs.ca,** Jonathan Murphy, GeoCognition, Gatineau, QC, Canada

**Opportunities in the Federal Public Service,** Clifford Scott, Resourcing Officer, Public Service Commission of Canada, Ottawa, ON, Canada

**Technical School Perspective,** David Broscoe, Head, GIS Department, Algonquin College, Ottawa, ON, Canada

# VENDOR SEMINARS/SÉANCES DES FOURNISSEURS

	Monday, June 19 Lundi 19 juin	Tuesday, June 20 Mardi 20 juin	Wednesday, June 21 Mercredi 21 juin
09:00 – 09:30		NRCan - CSRS	ESRI Canada
09:30 – 10:00		BAE Systems	MapInfo
10:00 – 10:30		ESRI Canada	Cansel Survey Equip
10:30 – 11:00		Cansel Survey Equip	Spatial Geo Link
11:00 – 11:30		Spatial Geo Link	Intergraph
11:30 – 12:00		Kheops Technologies	PCI Geomatics
12:00 – 13:00			
13:00 – 13:30		MDA Geospatial	NRCan - CSRS
13:30 – 14:00	MapInfo	MapText, Inc.	GeoConnections
14:00 – 14:30	Linnet Systems	MapInfo	
14:30 – 15:00	ESRI Canada	ER Mapper	
15:00 – 15:30	Cansel Survey Equip.	Optech	
15:30 – 16:00	MDA Geospatial	CARIS	
16:00 – 16:30	Spatial Geo Link	PCI Geomatics	
16:30 – 17:00	PCI Geomatics	Intermap	

**ALL VENDOR SEMINARS TAKE PLACE IN OCC, ROOM 6A**

## MONDAY, JUNE 19/LUNDI 19 JUIN

**13:30 - 14:00**

### MapInfo

*Adrift in Islands of GIS Information: Effective Navigation*  
Do you have islands of GIS information in your municipality? Is your location information inaccessible to those who could benefit from it the most? Are your citizens empowered and informed about where your assets are? This presentation focuses on sharing your location information and GIS data to the municipal workers who need it the most. Eighty percent of data in any organization has a spatial component. Find ways of leveraging this information and make your municipality more efficient and more open to your citizens without having to replace any of your existing technology.

**14:00 - 14:30**

### Linnet Systems

*Accountability and Information Management for Conservation Authorities*

Conservation authorities face increasing pressure to justify program expenditures while improving program administration. Linnet Systems has developed Watershed—The System, a tool, currently in use in several hundred conservation districts in the United States, that allows conservation organizations to manage information on stakeholders, conservation plans and practices, budgeting and grant management, progress reporting, performance measurement and more.

**14:30 - 15:00**

### ESRI Canada

*What's New in ArcGIS 9.2?*

This presentation will examine the new functionality of ArcGIS 9.2, the upcoming major release of ArcGIS. Topics will cover Desktop enhancements like cartographic representations, charting and animation. Geodata management enhancements such as geodatabase replication and archiving will also be covered. On the server, the presentation will highlight the new AJAX-enabled ADF (Application Developer Framework) common to both ArcIMS and ArcGIS Server. New capabilities for geoprocessing on the server, and the new Mobile ADF will also be examined. This presentation is for those who have an understanding of ArcGIS 9.x and are looking to explore the new functionality.

**15:00 - 15:30**

### Cansel Survey Equipment

*Trimble GPS Hardware: The Latest Leap in the Evolution of the GeoExplorer Product Line and the Pathfinder Pro Series Receivers*

The GeoExplorer 2005 series builds on the phenomenal success of the GeoXT and GeoXM handhelds with the addition of a new high-end receiver — the GeoXH - to provide sub-foot accuracy in a fully integrated handheld GPS system. Learn about the H-Star technology found in the GeoXH and Pathfinder ProXH receivers.

**15:30 - 16:00**

### MDA Geospatial Services

*RADARSAT 2: Adding Capabilities to an Operational Success*

RADARSAT 1 has been providing operational SAR data for over 10 years. Radarsat 2 will be launched in 2006 and will provide innovative imaging modes for new application techniques, as well as ensuring data continuity for operational users.

**16:00 - 16:30**

### Spatial Geo-Link Limited/Leica

#### Geosystems Geospatial Imaging

*Fixing What's Wrong with Existing Methods for Digital Orthophoto Production*

The presentation will review new tools introduced in the Leica Photogrammetry Suite to facilitate rapid data capture and orthorectification. It will also introduce the Leica Ortho Accelerator (LOA) that provides a comprehensive view of the production project that is similar to a Geographical Information System (GIS) application. All project data are maintained on the central LOA server. Users interact with the project via graphical clients. The entire ortho processing workflow is accomplished through the Map View interface, custom menus and checklists.

**16:30 - 17:00**

### PCI Geomatics

*Geomatica 10 - Overview and What's New*

With Geomatica 10, PCI Geomatics offers the most complete geospatial solution to date. No other geomatics software has the built-in capabilities to support your organization's geospatial data processing needs and increase productivity like version 10. With an emphasis

on automation, interoperability, and complete support for Oracle 10g, this desktop software offers solutions for all of your geospatial processing needs.

## TUESDAY, JUNE 20/ MARDI 20 JUIN

**9 - 9:30**

### NRCan - Canadian Spatial Reference System (CSRS)

*CSRS- Precise Point Positioning (PPP) Free Online Post-Processing Service*

Learn all about NRCan's CSRS-PPP service that allows GPS users in Canada (and abroad) to compute positions to accuracies that rival phase-differential post-processing. No need to access data simultaneously collected from a base station, simply submit raw observation data from your (single or dual-frequency) GPS receiver over the Internet. Establishing decimeter to centimeter accuracy geodetic control anywhere has never been this easy!

**9:30 - 10:00**

### BAE Systems

*The Latest Release of SOCET SET*

Learn about the innovations in BAE Systems' latest release of SOCET SET, the renowned photogrammetry software for geospatial analysis and mapping. SOCET SET v5.3 enables users to design rapid, productive workflows to expedite the generation of geographic information from imagery.

**10:00 - 10:30**

### ESRI Canada

*Overview of Server GIS at ArcGIS 9.2*

This presentation will cover in depth the capabilities of ArcGIS server products with a focus on 9.2, the upcoming major release of ArcGIS. Topics will cover Personal and Workgroup ArcSDE, built on SQL Server Express, geodatabase replication and archiving. Web application development with the new AJAX-enabled ADF (Application Developer Framework) common to both ArcIMS and ArcGIS Server will also be examined. New capabilities for geoprocessing on the server, and the new Mobile ADF will also be covered. This presentation is for those who have an understanding of ArcGIS 9.x and are looking to explore the new functionality of ArcGIS server products at 9.2.

**10:30 - 11:00**

### Cansel Survey Equipment

*Streamlined GPS Data Processing Inside of ArcGIS with Trimble GPS Analyst Extension for ESRI ArcGIS and the GPSCorrect Extension for ArcPad*

See how to improve efficiency and improve your data quality with this ArcGIS extension. GPS Analyst optimizes field-to-office workflows by allowing you to work with GPS data directly inside your personal geodatabase. Checkout and check-in data from ArcPad or import and export Trimble SSF files. Utilize Trimble's built-in differential correction engines to improve positional accuracy.

**11:00 - 11:30**

### Spatial Geo-Link Limited/Leica Geosystems Geospatial Imaging

*Conveying 3D Digital Reality*

Maximizing the understanding of 3D spatial relation-

# VENDOR SEMINARS / SÉANCES DES FOURNISSEURS

ships is critical to any logistical application. By increasing spatial awareness the costs of a project or process can be reduced while increasing efficiency. The aim of this presentation is to unveil the ultimate 3D visualization tool suite—Leica Virtual Explorer, a scalable enterprise solution that permits users to analyze, annotate, model, overlay, animate and collaborate while communicating and editing 3D scenes in real-time via the Web.

**11:30 - 12:00**

## **Kheops Technologies**

*JMap 3.0: An Open Integrated Web-GIS Solution for Land and Asset Management*

Jacques Charron, president of KHEOPS technologies, will review release 3.0 of JMap 3.0 and its capabilities to integrate various technologies to help manage territorial and infrastructure networks.

**13:00 - 13:30**

## **MDA Geospatial Services**

*From RADAR to OPTICAL Satellite Imagery - We have you covered!*

MDA's Geospatial Services provides data, information products and services from the majority of Earth observation satellites. A description of satellite imaging services with examples from Ontario and Nunavut will be presented, as well as a look into the future of imagery.

**13:30 - 14:00**

## **MapText, Inc.**

*Cartographic Text Placement*

MapText is the leading provider of cartographic label-placement solutions for desktop and Web applications worldwide. Our software is compatible with all major GIS systems. You get high-quality cartographic text placed automatically for any kind of map or chart at incredible speeds.

**14:00 - 14:30**

## **Map Info**

*Adrift in Islands of GIS Information: Effective Navigation*  
Please see the description under the Monday time slot.

**14:30 - 15:00**

## **ER Mapper**

*Enterprise Geospatial Imagery Solutions*

ER Mapper will have a presentation for their latest Enterprise Geospatial Imagery Solutions. This feature demonstrates our Image Web Server technology, and solutions for processing, managing, serving, and remotely accessing JPEG2000 and ECW geospatial imagery.

**15:00 - 15:30**

## **Optech Incorporated**

*The Optech ALTM 3100 EA Airborne Laser Mapping System*

In this session the specifications and features of Optech's new ALTM 3100 EA will be presented, including roll compensation, first, second, third and last pulse capture, wide and narrow beam divergence and much more. Navigation software, flight planning software and the REALM processing suite will be discussed, as well as data samples from third-party processing packages such as Terramodel and QT Modeler.

**15:30 - 16:00**

## **CARIS**

CARIS offers the latest spatial data warehouse and Web-based GIS technology in their Enterprise System for Municipalities. By centralizing all your spatial

information you can ensure that your Web-based GIS content is current, accurate and always available.

**16:00 - 16:30**

## **PCI Geomatics**

*Geomatica X - The Next Generation of Image-Centric Solutions*

PCI Geomatics has introduced a series of image-centric solutions designed to address geospatial industry needs for automation and production capacity. Geomatica X contains the company's software components used for building production workflows, such as automated DEM extraction, orthorectification, mosaicking, and more.

**16:30 - 17:00**

## **Intermap Technologies**

Intermap Technologies is re-mapping the United States and Western Europe using airborne radar mapping systems. The programs, NEXTMap USA and NEXTMap Europe, are producing high-accuracy/high-resolution Digital Elevation Models. Specifications and access to these homogenous, low cost DEMS will be presented.

**WEDNESDAY, JUNE 21/  
MERCREDI 21 JUIN**

**9:00 - 9:30**

## **ESRI Canada**

*Geodata Management in ArcGIS 9.2*

This presentation will discuss some of the latest developments in the management of geospatial data available from ESRI. Topics will include new features in ArcGIS 9.2 that supports the integration of spatial data into the enterprise: non-versioned editing, versioned data replication, archiving geodatabase history and spatial SQL for Oracle.

The presentation will also talk about advancements made in on-going National Road Network Collaboration project. The NRNC uses the latest functionality in ArcGIS 9.2 in the implementation of a distributed multi-user road network geodatabase. This presentation is intended for those who have an understanding of spatial databases and have a requirement to explore new trends in the management of enterprise geodatabases.

**9:30 - 10:00**

## **MapInfo**

*Adrift in Islands of GIS Information: Effective Navigation*  
Please see the description under the Monday time slot.

**10:00 - 10:30**

## **Cansel Survey Equipment**

*Using the Power of the Internet and GPS Infrastructure for Mobile GIS—Cansel's Can-Net*

Learn about the advantages of 'being connected'. Infrastructure systems are enabling technologies: cellular networks, pipelines, highways, fiber optics, power grids. Can-Net is a new serviced managed by Cansel. It's comprised of a series of reference stations across Canada that provide GPS data for real-time and post-processed applications. The data is delivered over the Internet and for real-time applications the Internet is linked to GPS receivers using the cellular wireless technologies of 1X and GPRS.

**10:30 - 11:00**

## **Spatial Geo-Link Limited/Leica Geosystems Geospatial Imaging**

*ERDAS IMAGINE 9.0 — Enterprise Enabled Geospatial Image Processing*

This presentation will detail the new functionality in IMAGINE 9.0, which provides enterprise-enabled geospatial image processing (imagery and feature geospatial information) by leveraging relational database capabilities and providing client-side interaction with spatially aware databases such as Oracle Spatial 10g, or ESRI ArcSDE.

**11:00 - 11:30**

## **Intergraph**

*Spatial Technology Trends in Security and Public Safety*

In recent years, our society has been increasingly focused on security and public safety. This increased attention has been driven by a number of (natural and man-made) actual events as well as by the increasing recognition of the increasing potential for various types of events. Fortunately, advanced technologies are allowing us to address security and public safety needs more effectively than in the past. This presentation will take a look at the evolving role that spatial technology is and will be playing in addressing society's needs for increased security and public safety. The presentation will include some actual case studies that employ spatial technology.

**11:30 - 12:00**

## **PCI Geomatics**

*Geomatica OEM - Empowering Image-Centric Solutions*

Utilize the PCI Software Development Kit V1.0 (ProSDK) and PCI ProPacks to incorporate state-of-the-art PCI Geomatics geospatial data processing technology into your product. The PCI ProSDK and ProPacks are designed for Original Equipment Manufacturers (OEMs) who wish to improve or add-to the geospatial processing power of their products. Plan to attend this session to learn more.

**13:00 - 13:30**

## **NRCAN - Canadian Spatial Reference System (CSRS)**

*CSRS-Precise Point Positioning (PPP) Free Online Post-Processing Service*

Learn all about NRCAN's CSRS-PPP service that allows GPS users in Canada (and abroad) to compute positions to accuracies that rival phase-differential post-processing. No need to access data simultaneously collected from a base station, simply submit raw observation data from your (single or dual-frequency) GPS receiver over the Internet. Establishing decimeter to centimeter-accuracy geodetic control anywhere has never been this easy!

**13:30 - 14:00**

## **GeoConnections**

The Canadian Geospatial Data Infrastructure (CGDI) provides the technology, standards, access systems and protocols necessary to harmonize all of Canada's geospatial databases, and make them accessible on the Internet. Please join us for a presentation on the redesigned GeoConnections Discovery Portal.

# EXHIBITOR DIRECTORY / RÉPERTOIRE DES EXPOSANTS

## Exhibit Hours / Heures d'exposition

Monday, June 19 / Lundi 19 juin	14:00 - 18:00
Tuesday, June 20 / Mardi 20 juin	10:00 - 18:00
Wednesday, June 21 / Mercredi 21 juin	10:00 - 14:00

## Corporate Sponsors / Sociétés Commanditaires

Autodesk



BAE SYSTEMS



### AMEC

#### Booth 314

300 - 210 Colonnade Rd. 5  
Ottawa, ON Canada K2E 7L5  
Phone: 613-727-0658  
Fax: 613-727-9465  
www.amec.com  
info@amec.com

AMEC works in many different markets around the world but we have special expertise and a large customer base in the oil and gas, power and transport sectors and in process industries like mining, food and pharmaceuticals. We also work across the public sector for national and local governments, providing facilities and services in the health, education and defense sectors, and have long experience in urban regeneration projects.

### Association of Canadian Map Libraries and Archives (ACMLA)

#### Booth 124

c/o Canadian Archives and Special Collections Branch  
Library and Archives Canada  
550 Boul. de la Cité  
Gatineau, Quebec Canada K1A 0N4  
www.acmla.org  
contact@acmla.org

ACMLA actively serves as the representative professional group for Canadian map librarians, cartographic archivists and others interested in geographic information in all formats. Since its inception in 1967, the achievements of the association have been notable, including a vigorous publishing program, development of professional standards and international cataloguing rules, and efforts to increase national awareness of issues concerning spatial information and recognition of the contribution of map libraries and cartographic archives.

### Association of Ontario Land Surveyors

#### Booth 521

1043 McNicoll Avenue  
Toronto, ON Canada M1W 3W6  
Phone: 416-491-9020  
Fax: 416-491-2576  
www.aols.org  
info@aols.org

The Association of Ontario Land Surveyors (AOLS) is the governing body for professional surveyors in Ontario. It is made up of over 685 professionals whose combined skills in the disciplines of geodesy, photogrammetry, hydrography, cadastral surveying and geographic information management are recognized and respected worldwide.



### Atlas of Canada, Natural Resources Canada / L'Atlas du Canada, Ressources naturelles Canada

#### Booth 301

615 Booth Street, Room 650  
Ottawa, ON Canada K1A 0E9  
Phone: 613-992-8118  
Fax: 613-947-2410  
www.atlas.gc.ca  
info@atlas.gc.ca

In 2006 The Atlas of Canada marks its 100th anniversary. The first edition of The Atlas of Canada was published in 1906 followed by four printed volumes in 1915, 1957, 1974, and 1993. The Sixth Edition was launched on the Internet in 1994, and was one of the first online atlases. The Atlas of Canada provides a reliable source of national-scale maps that represent the social, economic and environmental make-up of Canada over time. The Atlas of Canada, a product of Natural Resources Canada, provides a reliable summary of national-scale geographical information and framework data. The Atlas of Canada allows users to access high-level, authoritative information of national scope through an interesting and dynamic collection of maps and related information about Canada, with effective and intuitive tools for easy user access.



### Autodesk Canada

#### Booth 409

90 Allstate Parkway, Suite 201  
Markham, ON Canada L3R 6H3  
Phone: 905-946-0928  
Fax: 905-946-0926  
www.autodesk.com/infrastructure  
info@autodesk.com

Autodesk is a leader in Infrastructure Lifecycle Management. Through world-class solutions Autodesk enables you to create, manage and share your geospatial data with customers and partners to meet emerging infrastructure business challenges. Learn how Autodesk's solutions integrate to leverage your valuable mapping, GIS and design data.

BAE SYSTEMS

### BAE Systems

#### Booth 105

10920 Technology Place  
Mail Zone 62-TAL  
San Diego, CA 92127, USA  
Phone: 858-675-2850  
Fax: 858-592-5309  
www.socetgxp.com  
info@socetgxp.com

BAE Systems' geospatial software products provide today's most comprehensive solution for image display and exploitation and for photogrammetric production. Our products serve government and commercial customers' photogrammetry, mapping, GIS, image exploitation, image analysis, precision targeting, intelligence, visualization, simulation and mission preview/rehearsal needs in more than 70 countries around the globe.

### Canada's National Forest Information System (CCFM-NFIS)

#### Booth 323

506 West Burnside Road  
Victoria, BC Canada V8Z 1M5  
Phone: 250-363-8803  
Fax: 250-363-0775  
www.nfis.org

This Canadian Council of Forest Ministers initiative is providing users with direct Web-based access to information holdings of government agencies, non-government organizations and industry across Canada. NFIS provides a wide range of services ranging from simple data portrayal to sophisticated spatial analyses—users can discover, integrate, analyze and display current, authoritative and accurate information on Canada's forests and on sustainable forest management.

### Canadian Cartographic Association (CCA)

#### Booth 225

c/o Department of Geography & Environmental Studies  
Carleton University  
1125 Colonel By Drive  
Ottawa, Canada K1S 5B6  
Phone: 613-520-2600 ext. 2570  
Fax: 613-520-4301  
cca-acc.org  
info@cca-acc.org

The Canadian Cartographic Association, founded in 1975, is open to anyone with an interest in any aspect of mapping. Currently there are five special interest groups in the CCA: Analytical Cartography and GIS, Cartographic Education, History of Cartography, Map Use and Design, and Map Production Technology.

# EXHIBITOR DIRECTORY / RÉPERTOIRE DES EXPOSANTS

## Canadian Institute of Geomatics (CIG)

### Booth 109

1390 Prince of Wales Drive, Suite 400  
Ottawa, ON Canada K2G 3N6  
Phone: 613-224-9851  
Fax: 613-224-9577  
www.cig.acsg.ca  
exdircig@magma.ca

Founded in 1882, the Canadian Institute of Geomatics has evolved to be a non-profit scientific and technical association devoted to advancing the development of Geomatics Sciences in Canada. CIG is the Publisher of *Geomatica*, an internationally respected quarterly journal dedicated to the dissemination of information from Canada and abroad.

## Canal Geomatics Inc.

### Booth 325

51 St. Andrew Street  
Ottawa, ON, K1N 5E8, Canada  
Phone: 819-595-5015  
Fax: 819-595-0089  
www.canalgeomatics.com  
sales@canalgeomatics.com

Canal Geomatics Inc. is an industry-leading distributor of surveying and navigation technology, specializing in OEM GPS, land survey, wireless and GIS data collection hardware and software for markets requiring high accuracy and reliability. Our mission statement is to find the best products and extend premium support to ensure the success of our customers.

## Cansel Survey Equipment Inc.

### Booth 113

3751 Napier Street  
Burnaby, BC Canada V5C 3E4  
Phone: 604-205-7658  
Fax: 604-299-1998  
www.cansel.ca  
info@cansel.ca

Cansel is the largest distributor of land-based positioning systems in Canada, providing sales, rentals, repair, training, and technical support at nine locations nationwide. We offer the largest selection of land-based measurement equipment including high-end optical survey instruments, GPS, construction lasers, machine control, accessories, and field supplies.

## CARIS

### Booth 221

115 Waggoners Lane  
Fredericton, NB Canada E3B 2L4  
Phone: 506-458-8533  
Fax: 506-459-3849  
www.caris.com  
info@caris.com

From its headquarters in Fredericton, New Brunswick, Canada, CARIS develops and supports rigorous, technologically advanced geomatics software. Its systems give value to spatial data and empower its customers with information that is meaningful.

## Compusult Limited

### Booth 316

40 Bannister Street  
Mount Pearl, NF Canada A1N 1W1  
Phone: 709-745-7914  
Fax: 709-745-7927  
www.compusult.net  
marketing@compusult.net

COMPUSULT is the leading provider of open-architecture, interoperable, geo-portal solutions designed to facilitate geospatial data access, integration and rapid, reliable, real-time geospatial data distribution. COMPUSULT's Web Enterprise Suite provides the most comprehensive, standards-based portal system for geospatial data discovery, access and delivery enabling more informed and accurate decision making.

## Consulting Services - World of Maps - Stonebridge Cartography

### Booth 223

1235 Wellington Street  
Ottawa, ON Canada K1Y 3A3  
Phone: 613-724-6776  
Fax: 613-724-7776  
www.worldofmaps.com  
info@worldofmaps.com

We are a consortium specializing in broadcast engineering data, precision rapid field infrastructure data collection, paper maps, electronic maps (GIS/GPS), cartographic books/tools, cartographic data manipulation, map publishing, and custom map making. Clients include the general public, utilities, broadcasters, and government (federal/provincial/municipal).



## DAT/EM Systems International

### Booth 408

8240 Sandlewood Place, Suite 101  
Anchorage, AK 99507, USA  
Phone: 907-522-3681  
Fax: 907-522-8688  
www.datem.com  
info@datem.com

DAT/EM Systems International is an Alaska-based company that has been developing photogrammetric software since 1987. As a leading developer of photogrammetric hardware and software products and services, DAT/EM specializes in 3-D feature collection software with its digital stereoplotter, SUMMIT EVOLUTION.

## DM Solutions Group

### Booth 416

30 Rosemount Ave, Suite 200  
Ottawa, ON Canada K1Y 1P4  
Phone: 613-565-5056  
Fax: 613-565-0925  
www.dmsolutions.ca  
info@dmsolutions.ca

DM Solutions Group has developed a reputation as a leader in the open source community and the clear corporate leader in the development and maintenance of MapServer — the most used Web mapping rendering engine in the world. Building on open source success, The DM Solutions Group business model focuses on custom solution delivery, professional services, hosted online mapping services, and value-added products for transportation (ATS), Location-Based Services and mobile delivery and other vertical markets.

## The Drafting Clinic Canada

### Booth 209

1500 Trinity Drive  
Mississauga, ON Canada L5T 1L6  
Phone: 905-564-1300  
Fax: 905-564-4949  
www.dcltd.ca  
info@dcltd.ca

The Drafting Clinic is Canada's leading source for GIS Imaging Solutions. We are the sole authorized distributor for Contex large format scanners and Consistent Software. Output solution partners include HP and Canon.

## DVP Geomatic Systems Inc.

### Booth 127

3645, boul. Ste-Anne  
Beaumont, QC Canada G1E 3L1  
Phone: 418-780-1900  
Fax: 418-877-3773  
info@dvp-gs.com  
www.dvp-gs.com

DVP-GS is committed to providing "Powerful Photogrammetric Software for the Most Demanding Professionals." We offer a comprehensive and complete family of software and dedicated to helping you meet high productivity standards. If you are looking for high accuracy, user-friendliness, productivity and compatibility, think DVP-GS.

## Editions du Septentrion and Library and Archives Canada / Bibliothèque et Archives Canada

### Booth 417

1300 Maguire  
Sillery, QC Canada G1T 1Z3  
Phone: 418-688-3556  
Fax: 418-527-4978  
www.septentrion.qc.ca  
sept@septentrion.qc.ca

Septentrion publishes titles specialized in history, although it welcomes titles in other topics of the humanities such as archaeology, political science, ethnography, etc. Septentrion also greets literary works, especially historical novels. Septentrion's catalog offers not only scholarly works, but also a large number of titles from art books to popular works. Most of the catalog's titles are published in French, but some are bilingual (French and English) or unilingual English. At GeoTec 2006, Septentrion and Library and Archives Canada present *Terra Nostra: The Stories Behind Canada's Maps, 1550-1950 / Terra Nostra. Les cartes du Canada et leurs secrets, 1550-1950*, written by senior archivist Jeffrey S. Murray. The volume reveals the stories behind 400 years of mapmaking in Canada and is the first history of Canadian cartography to come out in the last 30 years. Visit the booth to meet the author and have your book signed.

## Environment Canada

### Booth 103

70 Cremazie, 7th Floor  
Gatineau, QC Canada K1A 0H3  
Phone: 819-934-1004  
Fax: 819-994-5738  
www.environmentandresources.gc.ca/reseau  
reseau@ec.gc.ca

RésEau is a new and innovative water information demonstration led by the Government of Canada. The RésEau Web portal features interactive maps, tools and data from a diverse cross section of partners. Topics include water quality, quantity, use, groundwater and human health.

## ER Mapper

### Booth 110

13400 Sabre Springs Parkway, Ste. 150  
San Diego, CA 92128 USA  
Phone: 858-391-5638  
Fax: 858-391-5649  
www.ermapper.com  
queries@ermapper.com

ER Mapper leads in the invention, development and deployment of the industry's most advanced Geospatial Imagery Solutions. Since 1989, ER Mapper has been building software solutions for organizations that need to produce, manage, and/or distribute very large geospatial images (typically mosaics of airphotos or high resolution satellite images). We provide off-the-shelf software components, software kits to other application developers, software customization and integration services, consultancy and application hosting.





## eSpatial, Inc.

### Booth 408

2325 Dulles Corner Blvd, #500  
Herndon, VA 20171, USA  
Phone: 703-788-6580  
Fax: 703-788-6511  
www.espatial.com  
info@espatial.com

eSpatial is a world leader in enterprise strength spatial information management technology. The company provides integrated spatial solutions that consolidate all forms of spatial data, integrate that information with business systems and distribute the derived intelligence to users anywhere, on any device, connected or disconnected. Its standards based Rapid Application Development environment, ISMART, enables organizations to quickly and easily build new or extend existing applications to include spatial functionality.



## ESRI Canada

### Booth 201

49 Gervais Drive  
Toronto, ON Canada M3C 1Y9  
Phone: 416-441-6035  
Fax: 416-441-6838  
www.esricanada.com  
info@esricanada.com

Established in 1984, ESRI Canada is a Canadian-owned company specializing in geographic information systems (GIS) solutions. We provide organizations with complete solutions based on the world's leading GIS technologies. ESRI Canada also provides professional services including training, technical support, and enterprise GIS implementation services. ESRI Canada has 13 regional offices across the country, with headquarters in Toronto, Ontario.

## Gemini Positioning Systems

### Booth 123

611 - 71 Ave SE  
Calgary, AB Canada T2H 0S7  
Phone: 403-252-5007  
Fax: 403-252-5392  
www.gps1.com  
info@gps1.com

Gemini Positioning Systems is the exclusive Canadian distributor for Thales Navigation's professional line of GPS products. Our Canada-wide network of sub-dealers provides ideal exposure of Thales Navigation's GPS products. Gemini also provides complete GPS hardware/software development for specific applications.

## GeoConnections Secretariat

### Booth 215

615 Booth Street, 6th floor, Room 644v  
Ottawa, ON Canada K1A 0E9  
Phone: 613-947-8947  
Fax: 613-947-2410  
www.geoconnections.org  
info@geoconnections.org

GeoConnections is a national partnership program to evolve and expand the Canadian Geospatial Data Infrastructure (CGDI)—an online resource that provides Canadians with on-demand, inter-jurisdictional access to geographic information (e.g. maps, satellite images). GeoConnections funds the development of Web-based geospatial applications to support decision making in the following areas of interest: public health, public safety, Aboriginal communities, and environment and sustainable development.

## Geomatics Institute at Fleming

Booth 420  
200 Albert St. South  
Lindsay, ON Canada K0M 2C0  
Phone: 705-324-9144  
Fax: 705-878-9318

The Geomatics Institute at Fleming is an award-winning centre of excellence—excellence in the developing and nurturing of cartographic, GIS, remote sensing, and surveying skills. From the comfort of a small town situated among the Kawartha Lakes, these advanced skills are provided to those individuals who wish to enter the geomatics industry with a level of expertise and motivation that has employers repeatedly saying, "Get me a Fleming grad!"

## Geospatial Information and Technology Association (GITA)

### Booth 111

10 Nester Ct  
Whitby, BC Canada L1P 1H9  
Phone: 705-665-5994  
Fax: 705-665-0947  
www.gita.org  
info@gita.org

For nearly three decades, GITA has provided high-quality, unbiased information for professionals involved with geospatial information and technology. Tap into the wealth of geospatial knowledge available from GITA by visiting our Web site.



## GeoTec Media

### Booth 324

760 Market Street, Suite 432  
San Francisco, CA 94102 USA  
Phone: 415-839-5060  
Fax: 303-544-0595  
www.geoplac.com  
eventinfo@geoplac.com

GeoTec Media has been providing guidance for practitioners and a voice for vendors for 20 years as the publisher of *GeoWorld* magazine and *Geospatial Matters*, the developer of the Web portal GeoPlace.com, the distributor of the weekly "GeoReport" e-newsletter, and the organizer of the annual GeoTec Event tradeshow and conference.

## GIS Development

### Booth 511

G-4 Sector 39  
Noida, VP India 201301  
Phone: 91-120-2502180  
Fax: 91-120-2500060  
www.gisdevelopment.net  
megha.datta@gisdevelopment.net

GIS Development is a Geospatial Communications Network organisation, which strives to promote and propagate usage of Geographic Information Science, technology and applications through its publications, portal, conferences/tradeshows and training programmes in the Asia, Pacific and Middle East Regions.



i n v e n t

## Hewlett-Packard Canada Ltd. (HP)

### Booth 401

5150 Spectrum Way  
Mississauga, ON Canada L4W 5G1  
Phone: 905-206-3252  
Fax: 905-206-3485  
www.hp.ca  
info@hp.ca

HP is the number one IT company world wide, supplying millions of people and industries with premiere computing and printing. HP provides GIS professionals with the ability to use the powerful personal workstations to present geographical information on the widest variety of large format printers. As the leader in reliable printing, we provide industry standard performance systems that deliver fast, premium-quality large-format prints. HP does all this while lowering your total cost of operations.

## Hunter GIS

### Booth 515

2285 Dunwin Drive, Unit 18  
Mississauga, ON Canada L5L 3S3  
Phone: 905-607-4120  
Fax: 905-855-2411  
www.hunter-gis.com  
gisinfo@hunter-gis.com

Hunter GIS develops Geographic Information System solutions on the Autodesk MapGuide platform for the municipal, utility, and resource sectors. Solutions are customized to client data, business practices and future requirements, offering compelling economic advantages for information communication to user desktops.

## I.S.M. International Systemap Corp.

### Booth 101

Suite 1800 - 1188 West Georgia Street  
Vancouver, BC Canada V6E 4A2  
Phone: 604-669-8439  
Fax: 604-669-8496  
www.mypurview.com  
info@mypurview.com

I.S.M. International Systemap Corp. demonstrates PurVIEW—an integrated 3-D mapping extension for ArcGIS. Newly released in 2005, PurVIEW enables precise stereoscopic viewing and accurate Virtual-ZT 3-D feature digitizing, geodatabase-direct, with only a standard mouse. Using the staple data ingredients for orthophoto processing, without external imaging engine or exotic photogrammetric interface, bypassing data translation or interoperability issues, PurVIEW is the efficiency ideal finally attained.

## Intergraph Canada LTD.

### Booth 214

2912 Memorial Drive SE  
Calgary, AB Canada T2A 7R9  
Phone: 403-569-5500  
Fax: 403-569-5801  
www.intergraph.com  
info@intergraph.com

Intergraph Corporation (NASDAQ: INGR) is the leading global provider of spatial information management (SIM) software. Security organizations, businesses and governments in more than 60 countries rely on the company's spatial technology and services to make better and faster operational decisions. Intergraph's customers organize vast amounts of complex data into understandable visual representations, creating intelligent maps, managing assets, building and operating better plants and ships, and protecting critical infrastructure and millions of people around the world.

# EXHIBITOR DIRECTORY / RÉPERTOIRE DES EXPOSANTS

## Intermap Technologies Inc.

### Booth 222

400 Inverness Parkway, Suite 330  
Englewood, CO, 80112-5847 USA  
Phone: 303-708-0955  
Fax: 303-708-0952  
www.intermap.com  
info@intermap.com

Intermap is digitally remapping entire countries, building unprecedented national databases, called NEXTMap, of highly accurate digital topographic maps (including elevation). Customers purchase Intermap's high-quality, low-cost data to facilitate better decision making for numerous commercial, governmental, military and consumer applications.

## Kheops Technologies

### Booth 415

300 St-Sacrement, Suite 114  
Montreal, QC Canada H2Y 1X4  
Phone: 514-285-1211  
Fax: 514-285-1177  
www.kheops-tech.com  
info@kheops-tech.com

KHEOPS Technologies is the software creator of JMap, an open solution that allows online interactive access to spatial information and analysis tools through various networks (Internet, Intranet, Mobile, etc.). One hundred percent Java, JMap is a robust application recognized for its speed, its interoperability (multi-formats/multi-environments) and its ease of use and administration.

## Land Information Ontario

### Booth 114

300 Water St. PO Box 7000  
Peterborough, ON Canada K9J 8M5  
Phone: 705-755-1672  
Fax: 705-755-2149  
www.lio.gov.on.ca  
info@lio.gov.on.ca

Land Information Ontario supports the collaborative use of geospatial data through a number of programs that provide access to geographic information about Ontario. Land Information Ontario also works with partners to establish common data standards so geographic information is efficiently collected, stored and managed.



THE LAND SYSTEMS COMPANY

## Linnet Systems

### Booth 125

1600-444 St. Mary Ave.  
Winnipeg, MB Canada R3K 0P4  
Phone: 204-957-6470  
Fax: 204-957-7568  
www.linnet.com  
info@linnet.com

Linnet Systems develops Internet and GIS-based software solutions for natural-resource-based business processes. Linnet's business intelligence and program delivery products serve agriculture, forest products, environment, utilities and government markets across North America and worldwide.

## MapInfo

### Booth 507

One Global View  
Troy, NY, 12180-8399 USA  
Phone: 518-285-7133  
Fax: 518-285-7090  
www.mapinfo.com

info@mapinfo.com

MapInfo is the global leader in Location Intelligence solutions, integrating software, data and services to provide greater value from location-based information and drive more insightful decisions. Our mission: enable every business and government—worldwide—to harness the power of location.

## Mapping and Charting Establishment

### Booth 116

615 Booth Street  
Ottawa, ON Canada K1A 0E9  
Phone: 613-996-6203

The Mapping and Charting Establishment provides geospatial information and geomatics support to the Canadian Forces.

## MapText, Inc.

### Booth 224

666 Plainsboro Road, Suite 1025  
Plainsboro, NJ, 08536 USA  
Phone: 609-716-7552  
Fax: 609-716-7553  
www.maptext.com  
info@maptext.com

MapText is the leading provider of cartographic label-placement solutions for desktop and Web applications worldwide. Our software is compatible with all major GIS systems. You get high-quality cartographic text placed automatically for any kind of map or chart at incredible speeds.

## MDA Geospatial Services

### Booth 321

13800 Commerce Parkway  
MacDonald Dettwiler Building  
Richmond, BC Canada V6V 2J3  
Phone: 604-231-4972  
Fax: 604-231-4900  
www.mdacorporation.com  
info@mdacorporation.com

MDA's Geospatial Services International (formerly RADARSAT International) is a world-leading provider of data, information products and services derived from radar and optical Earth imaging satellites. Our markets include resource mapping, agriculture, environmental monitoring, disaster management and maritime surveillance. Contact us today!

## National Geospatial-Intelligence Agency

### Booth 117

4600 Sangamore Road, Mail Stop D-143  
Bethesda, MD, 20816-5003 USA  
Phone: 301-227-1045  
Fax: 301-227-0117  
www.nga.mil  
info@nga.mil

NGA provides timely, relevant, and accurate geospatial intelligence (a combination of imagery, imagery intelligence, and geospatial information) to the military warfighter and to our nation's senior policy and decision makers.

## National Land and Water Information Service (NLWIS)

### Booth 115

Building 57, 960 Carling Ave  
Ottawa, ON Canada K1A 0C6  
Phone: 613-694-2671  
Fax: 613-715-5111  
www.agr.gc.ca/NLWIS  
kerrb@agr.gc.ca

The National Land and Water Information Service, a four-year Major Crown Project led by Agriculture and Agri-Food Canada, will provide online agri-environment data, information, tools and expertise to support land-use decision making. Implementation of the Service began in May 2005, with full-service delivery being phased in by 2009.



Natural Resources  
Canada

Ressources naturelles  
Canada

## Natural Resources Canada, Earth Sciences Sector / Ressources naturelles Canada, Secteur des sciences de la Terre

### Booth 309

615 Booth Street  
Ottawa, ON Canada K1A 0E9  
Phone: 613-996-3919  
Fax: 613-943-8742  
www.ess.NRCan.gc.ca  
esstweb@nrcan-rncan.gc.ca

Natural Resources Canada (NRCan) is home of the Earth Sciences Sector: the Government of Canada's principal Earth sciences agency, providing Canadians with timely and reliable geomatics and geoscience knowledge. NRCan builds upon the Government of Canada's commitment to create a world-leading economy driven by innovation, ideas and talent.



## Océ Canada Inc.

### Booth 315

4711 Yonge Street, Suite 1100  
Toronto, ON, M2N 6K8, Canada  
Phone: 416-228-3607  
Fax: 416-224-5778  
www.oce.ca  
info@oce.ca

Océ, a leader in manufacturing Wide Format Printing Systems, from stand-alone monochrome or colour printers and scanners to multifunctional systems. Complimented by our professional imaging supplies portfolio and service organization, we provide customers with unsurpassed quality, reliability and productivity.

## Open Geospatial Consortium, Inc. (OGC)

### Booth 322

35 Main St., Ste 5  
Wayland, MA, 01778 USA  
Phone: 508-655-5858  
Fax: 508-655-2237  
www.opengeospatial.org  
info@opengeospatial.org

The Open Geospatial Consortium, Inc. is a non-profit, international, voluntary consensus standards organization that is leading the development of standards for geospatial and location based services. Through our member-driven consensus programs, OGC works with government, private industry, and academia to create open and extensible software application programming interfaces for geographic information systems (GIS) and other mainstream technologies.

## Optech Incorporated

### Booth 320

300 Interchange Way  
Vaughan, ON Canada L4K 5Z8  
Phone: 905-660-0808  
Fax: 416-661-4168  
www.optech.ca  
info@optech.ca

Optech is the world leader in lidar survey instruments, with a global client base. The company's Airborne Terrain Laser Mapper (ALTM) is the latest in cutting-edge airborne surveying lidar equipment for large or small surveying opportunities.



## PCI Geomatics

### Booth 408

50 W. Wilmot Street, Suite 200  
Richmond Hill, ON Canada L4B 1M5  
Phone: 905-764-0614  
Fax: 905-764-9604  
www.pcigeomatics.com  
info@pcigeomatics.com

PCI Geomatics is a world-leading developer of image-centric geomatics software solutions. Recently, PCI Geomatics has begun offering custom solutions, providing professional services for large and small projects.

## Refractions Research

### Booth 423

Suite 400 - 1207 Douglas St.  
Victoria, BC Canada V8W 2E7  
Phone: 250-383-3022  
Fax: 250-383-2140  
www.refractions.net  
info@refractions.net

Refractions Research is a consulting and product development organization, dedicated to providing great technology and a great client experience. We specialize in spatial and database application development, application integration, and automatic data transformations.

## Safe Software

### Booth 421

Suite 2017 - 7445 132nd Street  
Surrey, BC Canada V3W 1J8  
Phone: 604-501-9985  
Fax: 604-501-9965  
www.safe.com  
info@safe.com

Safe Software Inc., the makers of FME, is the Spatial ETL (Extract, Transform, and Load) industry leader. Safe Software's focus is on providing software solutions and professional services that deliver seamless data access and format translation.

## Sani-International Technology Advisors Inc./LizardTech

### Booth 217

3075 14th Ave, Suite 224  
Markham, ON, L3R 0G9, Canada  
Phone: 905-943-7774  
Fax: 905-943-7775

Sani-International Technology Advisors Inc. (SANI-ITA) provides services and consulting in Geomatics. The Corporation, a GeoEye and LizardTech distributor, is also the authorised training centre in Canada for the ERDAS IMAGINE and Leica Photogrammetry Suite of software products. SANI-ITA is ISO 9001:2000 registered.  
www.sani-ita.com

## LizardTech

LizardTech, a Celartem company, is a worldwide leader in software solutions that make it significantly easier to manage, distribute, and access digital content such as aerial photography, satellite imagery and scanned color documents.  
www.lizardtech.com

## Spatial Geo-Link/ Leica Geosystems Geospatial Imaging

### Booth 120

Suite 224 3075 14th Avenue  
Markham, ON Canada L3R 0G9  
Phone: 905-470-5990  
Fax: 905-470-5992

Spatial Geo-Link Limited is the exclusive Leica Geosystems distributor in Canada of ERDAS IMAGINE remote sensing software, Leica Photogrammetry Suite (LPS) products, and ArcGIS/ESRI Extensions—Image Analysis, Feature Analyst, LIDAR Analyst and Stereo Analyst—and as such distributes and supports these products throughout Canada. Spatial Geo-Link Limited is an ESRI Business Partner.  
www.spatialgeolink.com

## Leica Geosystems Geospatial Imaging

Leica Geosystems Geospatial Imaging is streamlining workflows, enabling users to work more efficiently and accurately. Offering industry-leading photogrammetric mapping and remote sensing software, it facilitates the efficient capture of data, accurate referencing of imagery, easy measurement and analysis, and versatile presentation of spatial information.  
www.gi.leica-geosystems.com

## Statistics Canada

### Booth 220

3-C4 J.T., Tunney's Pasture  
Ottawa, ON Canada K1A 0T6  
Phone: 613-951-1880  
Fax: 613-951-0569  
www.statcan.ca  
geohelp@statcan.ca

Statistics Canada maintains a spatially referenced geographic database in support of the Censuses of Population and Agriculture, the Standard Geographical Classification and other Statistics Canada programs. STC also develops geographical concepts, delineates geographic areas, produces maps and other published reference materials, and offers a variety of services.

## Teranet

### Booth 414

1 Adelaide St. E., Ste. 600  
Toronto, ON Canada M5C 2V9  
Phone: 416-360-8863  
Fax: 416-703-5036  
www.teranet.ca  
info@teranet.ca

Teranet provides business-to-government (B2G) and business-to-business (B2B) e-service solutions that enable organizations to greatly enhance the services they provide to their customers. With a combination of unique capabilities and state-of-the-art systems, Teranet is at the forefront of delivering service potential in the land, legal, and financial services industries as well as enabling electronic government service delivery.

## Terralink International

### Booth 422

PO BOX 2872  
Wellington, New Zealand  
Phone: 64 4 915 6022  
Fax: 64 4 915 6030  
www.teralink.co.nz  
info@teralink.co.nz

Terralink International Limited provides GIS and mapping solutions that enable better business management. The company assists businesses with integrating their own data sets with imagery, cartography, spatial databases and mapping tools to create effective GIS systems.



## Topcon Positioning Systems

### Booth 404

7400 National Drive  
Livermore, CA, 94551 USA  
Phone: 925-245-8372  
Fax: 925-245-8586  
www.topcon.com  
info@topcon.com

Topcon is the worldwide leading manufacturer of precision positioning equipment. Topcon offers the widest selection of precision GPS+ systems, laser and machine control solutions, and land surveying instruments today. Topcon maintains its leadership by developing new technologies and supplying innovative products that target the needs of customers.

## URISA - Ontario Chapter

### Booth 517

15 Thornlea Road  
Thornhill, ON Canada L3T 1X2  
Phone: 416-338-2219  
Fax: 905-709-0764  
www.urisaoc.ca  
info@urisaoc.ca

URISA (Urban & Regional Information Systems Association) is the premiere non-profit organization for the use and integration of spatial information technologies to solve challenges in government agencies and improve the quality of life in urban and regional environments. The Ontario Chapter has over 500 individual and group members from all levels of government, GIS applications vendors, consultants, educators, students, and business professionals that provide educational programs and services related to spatial information systems and integrated solutions.

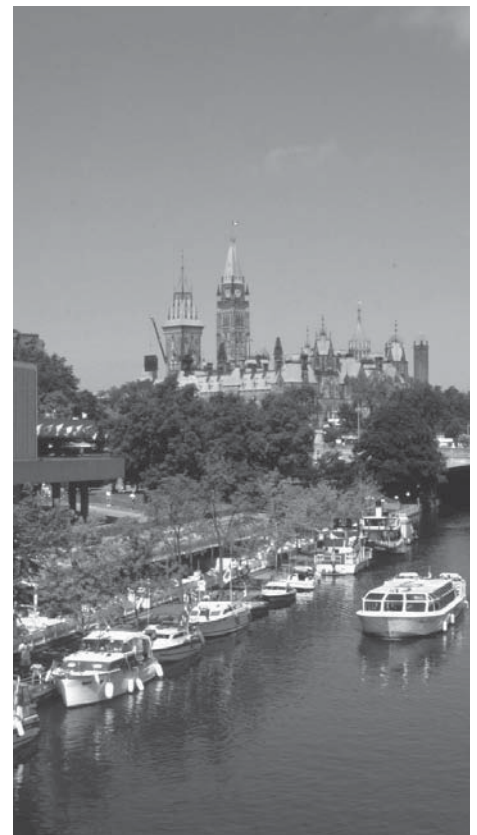
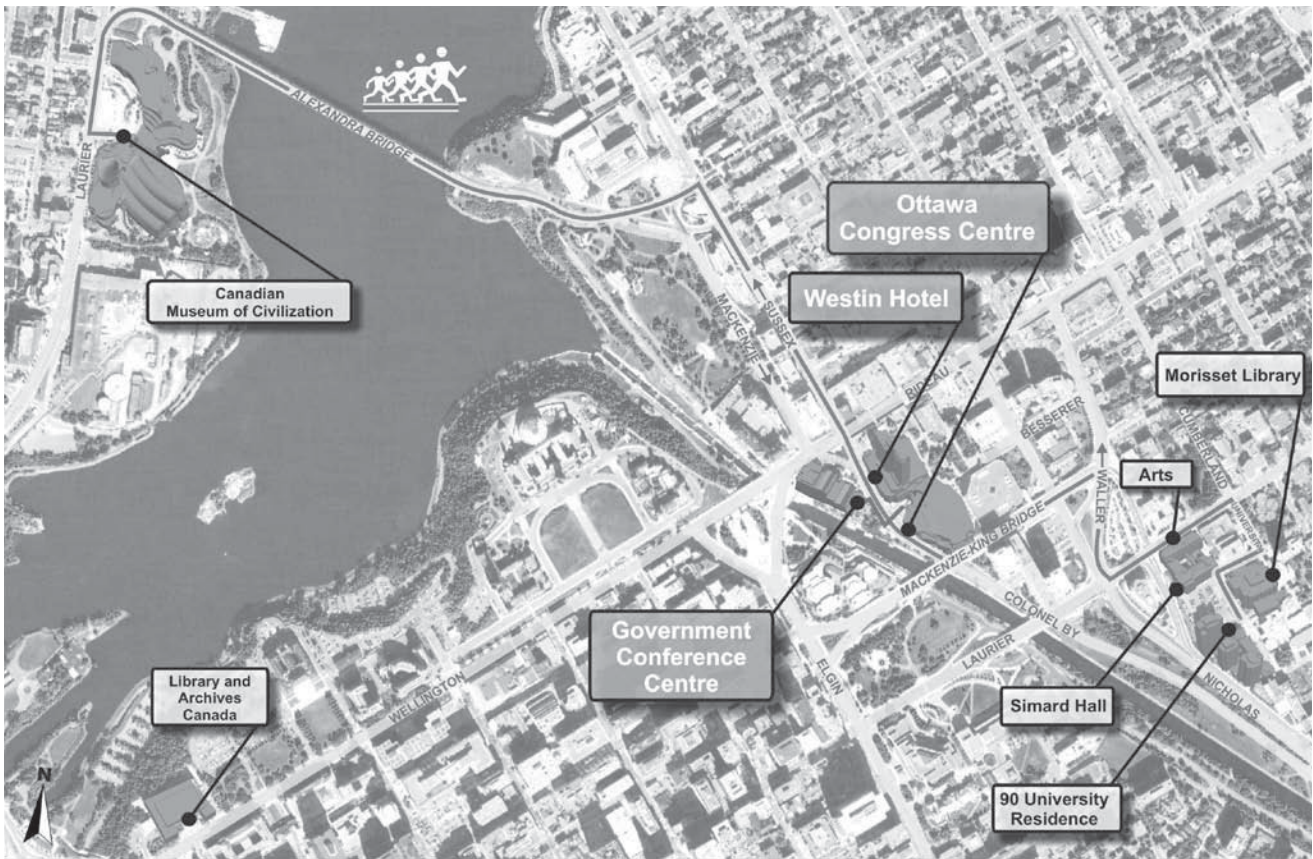


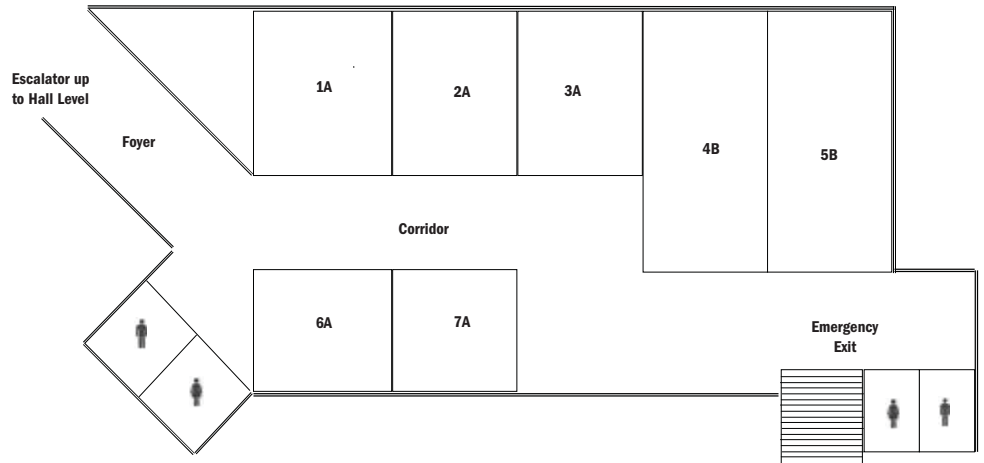
Photo By: Mark Fowl



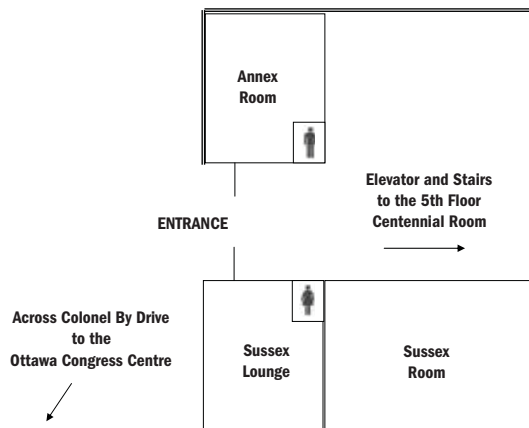


Map design: Eric Séguin, Sam Herold and Zoran Reljic, Laboratory for Applied Geomatics and GIS Sciences (LAGGISS), University of Ottawa. Data from the City of Ottawa Survey and Mapping Branch, PCI Geomatics and Digital Globe.

**OTTAWA CONGRESS CENTRE - Capital Hall Level**



**GOVERNMENT CONFERENCE CENTRE - 1st Floor**



## REGISTRATION/INSCRIPTION

### Registration Hours/ Heures d'inscription

Saturday, June 17 / Samedi 17 juin  
17:00 - 19:00

Sunday, June 18 / Dimanche 18 juin  
07:30 - 17:00

Monday, June 19 / Lundi 19 juin  
08:00 - 17:00

Tuesday, June 20 / Mardi 20 juin  
08:00 - 17:00

Wednesday, June 21 / Mercredi 21 juin  
08:00 - 13:30

### What's Included?/Ce qui est inclus?

The **Conference registration** includes admission to all conference sessions, entrance to the exposition, admission to the Opening Reception, admission to the Keynote Breakfast and a copy of the conference proceedings. NOTE: Workshops are an additional fee.

L'inscription à la conférence de trois jours comprend toutes les séances de la conférence, l'exposition, la réception du mardi, le petit-déjeuner d'ouverture ainsi que les pauses-café du lundi, mardi et mercredi. Note: Vous devez payer des frais additionnels pour assister aux ateliers.

The **One-Day Conference registration** includes admission to all conference sessions and entrance to the exposition on the day of your paid registration only. NOTE: The Wednesday Keynote Breakfast is an additional fee.

L'inscription à la conférence d'une journée comprend toutes les séances de la conférence, l'exposition et les pauses-café de la journée à laquelle vous vous êtes inscrit seulement.

The **Student/Educator registration** includes all conference sessions, entrance to the exposition, and admission to the Tuesday Reception and coffee breaks on Monday, Tuesday and Wednesday. NOTE: The Wednesday Keynote Breakfast is extra.

L'inscription pour les enseignants et les étudiants comprend toutes les séances de la conférence, l'exposition, la réception du mardi et les pauses-café du lundi, mardi et mercredi.

The **Expo-Only registration** includes admission to the exposition and vendor seminars. It is valid for all three days of the show.

L'inscription à l'exposition seulement comprend toutes les activités relatives à l'exposition. L'inscription est valide pour les trois jours au cours desquels aura lieu l'exposition.

A **Workshop registration** includes admission to one workshop on June 18 along with workshop material and a boxed lunch.

L'inscription à l'atelier comprend les droits d'entrée à un atelier, qui se tiendra le 18 juin, et au matériel essentiel à celui-ci.

### Proceedings/Actes

The conference Proceedings will be compiled on an interactive Web site. Access will be provided to all paying registrants immediately following the event.

Les actes de la conférence seront compilés sur un site Web interactif. L'accès sera donné immédiatement après l'événement à toutes les personnes inscrites ayant acquitté leurs frais.

## GENERAL INFORMATION/INFORMATION GÉNÉRALE

### Job Fair/ Salon de l'emploi

#### Exhibit Hall, Booth 427

The job fair at the 2006 GeoTec Event will provide excellent opportunities for matching employers and professionals. The Job Fair is located on the exhibit floor and will be open during exhibit hours. No charges or fees are asked from participants.

Salle des exposants, kiosque 427  
Le salon de l'emploi qui se tiendra à la conférence GeoTec 2006 permettra aux employeurs de rencontrer des professionnels. Le salon de l'emploi aura lieu dans la salle d'exposition et les heures d'ouverture seront les mêmes que celles de la conférence. Aucuns frais ou montant ne devront être défrayés de la part des participants.

### Westin Ottawa/ Hôtel Westin d'Ottawa

The Westin Ottawa is the official conference hotel. The hotel is connected both to the Ottawa Congress Centre and the Rideau Centre and has wonderful views of the Rideau Canal and Parliament Hill.

L'hôtel Westin d'Ottawa est l'hôtel officiel de la conférence. L'hôtel est relié au Centre des congrès d'Ottawa

ainsi qu'au Centre Rideau et offre des vues splendides sur le Canal Rideau et la Colline du Parlement.

Westin Ottawa  
11 Colonel By Drive  
Ottawa, ON K1N 9H4  
Phone: 613-560-7367  
Fax: 613-560-7359

### Speaker Ready Room/ Salle de préparatifs des conférenciers

OCC — Coat Check A / Vestiaire A  
Sunday through Thursday/  
Dimanche au mercredi — 08:00 — 17:00

### Internet Access/ Accessibilité à Internet

Wireless Internet will be provided in all meeting rooms at the Ottawa Congress Centre for a fee of \$25 for the duration of the event. Visit the registration desk to sign up for this service.

Internet sans fil sera offert dans toutes les salles de réunion du Centre des congrès d'Ottawa au coût de 25 \$ pour toute la durée de l'événement. Visiter le bureau d'inscription afin d'avoir accès à ce service.

### Message Centre/ Centre des messages

Incoming messages for attendees will be posted on a bulletin board near the registration area. Please check the board regularly if you expect messages.

Les messages reçus à l'intention des participants seront affichés sur un babillard situé près de l'aire d'inscription. Veuillez donc le consulter régulièrement si vous attendez des messages.

### Lunch Arrangements/ Arrangements de déjeuner

The Rideau Centre has a large food court and the Byward Market is also close by with a large variety of dining options. Workshop attendees will receive a boxed lunch on Sunday.

Le Centre Rideau possède une grande aire de restauration et le Marché By, offrant une grande variété de restaurants, est également situé à proximité. Les participants de l'atelier recevront un panier-repas pour le dîner de dimanche.

# ArcGIS

## GIS for the Enterprise



*ESRI Canada is the leading supplier of GIS for the enterprise. Benefits of the ESRI solution:*

- *Open, scalable, and standards-based*
- *GIS and IT interoperability*
- *Supports Services Oriented Architectures (SOAs)*
- *Supports leading commercial off the shelf integration*
- *Enables GIS functionality and business logic in desktops, servers, web services, mobile devices or from existing business applications*

*Visit us at booth #201 and be sure to attend our demonstrations.*



*[www.esricanada.com](http://www.esricanada.com) or 1-800-GIS-XPRT*

## HIGHLIGHTS / POINTS CULMINANTS

### Mobile Mapping Unit on Display / Unité cartographique mobile exposée

The Canadian Department of National Defence will display the Deployable Geomatic Support System (DGSS) on Tuesday outside of the Government Conference Centre. This system can be deployed almost anywhere and work in environments ranging from extreme cold to excessive heat, as well as heavy humidity and blowing dust. The current build of the DGSS focuses on the ability to be transported in a small footprint and is easily carried, setup and dismantled by a Geomatic Support Team (GST) of two.



Le ministère de la Défense nationale du Canada exposera son système de soutien géomatique déployable (SSGD) mardi à l'extérieur du Centre de conférences du gouvernement. Ce système peut être déployé pratiquement partout et fonctionne dans diverses conditions allant de froids extrêmes à des chaleurs excessives, ainsi que dans des climats très humides ou dans des tourbillons de poussière. La version actuelle du SSGD est orientée sur sa capacité à être transportée facilement et dans des petits endroits; celle-ci peut être installée et démontée par une équipe de soutien géomatique constituée de deux personnes.

### Cartographic Exhibit / Exposition cartographique

Maps and cartographic works are on display at The Atlas of Canada's 100th Anniversary Cartographic Exhibit. The Cartographic Exhibit is located in the exhibit hall adjacent to the tradeshow floor.

A special collection of historical and recently published paper maps will be displayed alongside digital cartographic products. The exhibit will be open to all GeoTec Event participants for self-guided exploration from June 19 to 21.

A total of 10 computer stations will display digital cartographic products such as Web-based mapping sites and other digital products. Supplemental documentation and map products are on display on the walls and adjoining tables.

Des cartes et des travaux cartographiques seront présentés lors de l'Exposition cartographique du 100e anniversaire de l'Atlas du Canada. L'Exposition cartographique se tiendra dans la salle des exposants attenante à l'étage du salon professionnel.

Une collection spéciale de cartes papier historiques et récemment publiés seront affichées aux côtés des produits cartographiques numériques. L'exposition se tiendra du 19 au 21 juin et sera offerte à tous les participants de la conférence GeoTec pour une exploration autoguidée.

Un total de 10 postes informatiques exposera des produits cartographiques numériques tels que des sites cartographiques sur le Web et tout autre produit numérique. De la documentation supplémentaire et des produits cartographiques seront affichés sur les murs et les tables avoisinantes.

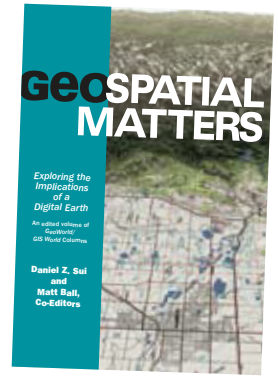
## BOOK LAUNCHES / LANCEMENTS DE LIVRE

### Geospatial Matters

GeoTec Media's new book *Geospatial Matters: Exploring the Implications of a Digital Earth* will be available during the GeoTec Event at Registration and is also available online at [www.geoplac.com](http://www.geoplac.com). The book is a collection of some of the best *GeoWorld* magazine columns written by renowned authorities Jerry Dobson, Nigel Waters, Jeremy Crampton and Daniel Sui.

This book captures a broad perspective of geospatial technology tools and applications, and promises to motivate and inspire discussion about the implications of the technology in today's society.

*Geospatial Matters* is the perfect teaching tool, not only for the academic environment, but also for anyone in government operations or land use planning and development. It's a must-read for anyone interested in GIS fundamentals.



### Presenting Terra Nostra / Nouvelle publication - Terra Nostra

Backed by extensive historical research and drawing on the world's largest and most important collection of early maps relating to Canada, *Terra Nostra: The Stories Behind Canada's Maps, 1550—1950* is the first history of Canadian cartography to come out in the last 30 years.

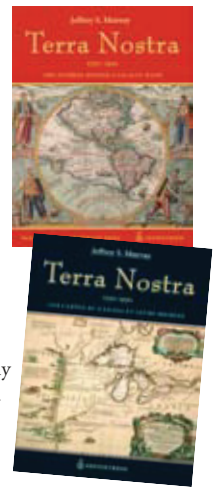
In this new volume published by les éditions du Septentrion in co-operation with Library and Archives Canada, author and Senior Archivist Jeffrey S. Murray reveals the stories behind 400 years of mapmaking in Canada. He unlocks the secrets of some 200 maps, plans, photographs and paintings from the Library and Archives Canada collection—all beautifully reproduced in full colour. He tells of the people who created these artifacts, why they were made and how they influenced the lives of Canadians.

Come visit the Septentrion/Library and Archives Canada booth at the 2006 GeoTec event to purchase a copy of *Terra Nostra* and to meet author Jeffrey S. Murray, who will be on hand to sign books and answer questions.

*Terra Nostra: Les cartes du Canada et leurs secrets, 1550-1950* est le fruit de recherches historiques approfondies et la première histoire de la cartographie canadienne à paraître depuis les trente dernières années. L'auteur a puisé dans la plus vaste et plus importante collection au monde de cartes anciennes se rapportant au Canada.

Dans ce nouveau livre, publié par les éditions du Septentrion en collaboration avec Bibliothèque et Archives Canada, l'auteur Jeffrey S. Murray, archiviste principal, retrace les histoires qui ont marqué 400 années de cartographie au Canada. Il soulève le voile des secrets de quelque 200 cartes, plans, photographies et tableaux de la collection de Bibliothèque et Archives Canada, tous merveilleusement reproduits en couleurs. Il nous parle de ceux qui ont produit ces artefacts, expliquant pourquoi ils les ont créés et en quoi ils ont influé sur la vie des Canadiens.

Vous pourrez vous procurer ce livre au stand de Septentrion/Bibliothèque et Archives Canada à la conférence Geotec. L'auteur Jeffrey S. Murray sera présent et se fera un plaisir de dédicacer ses livres et de répondre aux questions.



# SAVE THE DATE!

**June 11-14, 2007**  
**Calgary Telus Convention Centre**  
**Calgary, Alberta, Canada**

Held in conjunction with

**GeoAlberta**

**GEOTEC**  
**EVENT2007**