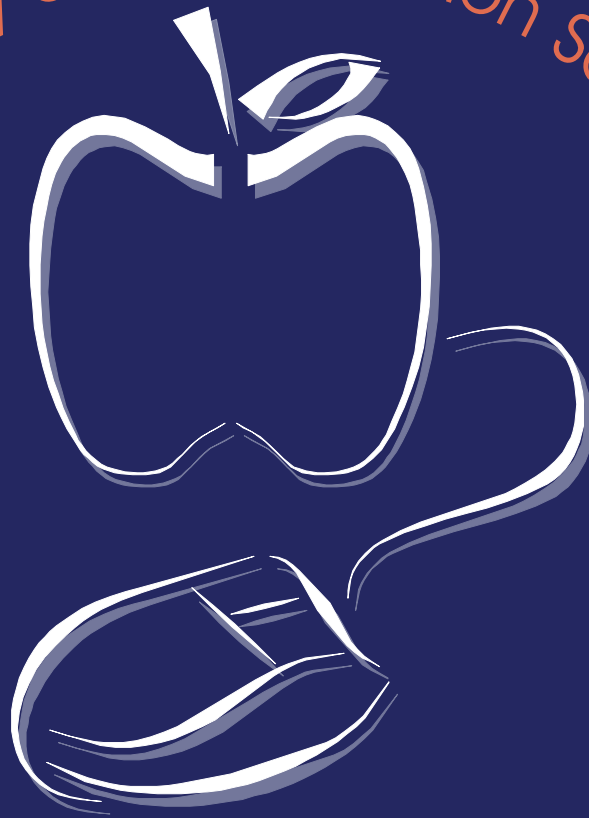


Reconsidering Library and Information Science Education



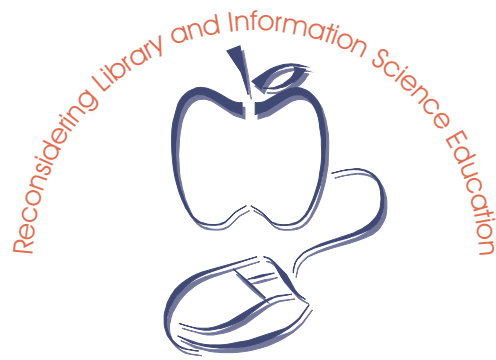
2001 ALISE Annual Conference



January 9–12, 2001

The Capital Hilton

Washington, D.C.



2001 **ALISE** Annual Conference

ACKNOWLEDGEMENTS

The 2001 ALISE Annual Conference would not have been possible without the generosity and hard work of volunteers across the association, the 2001 ALISE Conference Program Planning Committee (see page 3), the schools and programs that are institutional members of ALISE, and the partner organizations that support ALISE. Additional financial support permits the creation of a conference that is affordable for a wide range of participants. ALISE gratefully acknowledges these generous sponsors:

ALISE Partner

- **LEXIS-NEXIS** for underwriting the Awards Luncheon.

ALISE Friends

- **Association of Research Libraries (ARL)** for sponsoring the coffee break on Thursday, January 11.
- **EBSCO Information Services**
- The **Gale Group** for sponsoring the breakfast for an education session on Friday, January 12.
- **ISI**
- **Scarecrow Press** for sponsoring the t-shirts for the Doctoral Student SIG, providing \$300 to cover the cost of the shirts and printing.
- The **Schools and Programs** that have contributed to the Doctoral Student Reception.
- **University of Arizona, School of Information and Library Science**

ALISE Exhibitors:

- **National Library of Medicine**
- **Neal-Schuman Publishers, Inc.**
- **Scarecrow Press**

The **mission** of **ALISE** is to promote excellence in research, teaching, and service for library and information science education. To effect this mission, the goals of the association are to

- promote an understanding of the values and ethos of library and information science;
- support the professional and intellectual growth of individual members;
- advance research that contributes to and enlarges the knowledge base of library and information science and the education in the field;
- provide mechanisms for the exchange, dissemination, and receipt of information about issues, events, and trends in such areas as curriculum, research, funding, consulting, continuing education, government, and society as these influence and inform library and information science; and
- strengthen the association's leadership role in library and information science education.

A MESSAGE FROM THE PRESIDENT

Welcome to Washington, D.C.! I am pleased to serve as ALISE's president in its 86th year of existence. This conference invites us to examine our programs and institutions as we "Reconsider Library and Information Science Education." The Conference Program Planning Committee, chaired by Joseph J. Mika, has developed an exciting array of programs that reflect the broad range of curricular and research interests of our membership and profession.

Four days of sessions, beginning with preconference workshops (that vary from assuring success in writing grant proposals to legislative advocacy to online delivery of LIS education to preparing for employment) offer an opportunity to assess teaching methods, curricula, research, and practice in library and information studies. I believe this conference offers expert guidance, direction, and advice in teaching, research, and service to strengthen library and information science on our campuses.

I wish to thank Drohan Management, our association management firm, for their work on this conference, and I especially want to thank Rand Price, Maureen Thompson, Lisa Frase, Tamara Faggen, and Steve Hennessey for their assistance all year as we have learned to work together to better serve the ALISE membership and the profession through services and activities.

James M. Matarazzo
President

Conference Program Planning Committee

Joseph J. Mika (Wayne), chair

James M. Matarazzo (Simmons), president, ALISE

Norman Horrocks (Scarecrow Press), chair, Awards Committee; ex officio member

Prudence Dalrymple (Dominican), president-elect, ALISE; ex officio member

Delia Neuman (Maryland), chair, Research Committee; ex officio member

Ronald R. Powell (Wayne), chair, Juried Papers Committee; ex officio member

Louise S. Robbins (Wisconsin–Madison), second-year director



2000–2001 ALISE Board of Directors

President: James Matarazzo (Simmons)

Vice president-President-elect: Prudence Dalrymple (Dominican)

Past president: Shirley Fitzgibbons (Indiana)

Secretary-Treasurer: Patricia Feehan (South Carolina)

Directors: Ann Curry (British Columbia)
Louise S. Robbins (Wisconsin–Madison)
Danny P. Wallace (Oklahoma)

EXECUTIVE DIRECTOR'S REPORT

DMG Serves the ALISE Membership

Who hired you? Who pays your salary? What exactly do you do for ALISE? Who controls the checkbook? Who makes the policy decisions? What have you done for ALISE lately? These are but a few of the typical questions asked by members like you of ALISE staff recently. Many members do not realize or understand the contractual arrangement between the management firm and the ALISE Board of Directors (ABOD), nor do they realize the scope of services members of the staff perform daily for the advancement of ALISE as an organization.

Drohan Management Group (DMG) is one of several hundred firms performing a service for small to midsize associations. DMG is the firm that the ALISE Board of Directors selected after an extensive search in early 2000. DMG has agreed to perform a series of services as designated by the ABOD. The scope of services chosen is amendable at any time. All the services performed have fees associated with them. The total of services selected, and the appropriate fees attached to them, combine to make the total management fee that ALISE pays annually to DMG. The tasks ALISE selected include finance and accounting management (including membership and marketing); communications production (including the Membership Directory, Statistical Report, and conference materials); general administrative oversight (forecasting, strategic planning, working with the ABOD); and convention management.

Your ALISE staff are

- Randall Price, executive director
- Maureen Thompson, administrator
- Tamara Faggen, director of communications
- Huong Huynh, accountant
- Mary Lou Brennen, accounts payable clerk
- Lisa Frase, assistant administrator
- Matt Barr, assistant administrator
- Gwendolyn Hogan, director of operations
- Denise Southerland, receptionist
- Su-Hwa Wu, data processing clerk
- Steve Hennessey, Web site manager/communications associate

Finance and Accounting

ALISE staff have established a fund-accounting system that differentiates between restricted (membership dues to be disbursed to states) and unrestricted funds. They initially set up and currently maintain bank accounts and advise the ABOD on money management issues. All checks written and disbursed are signed by Patricia Feehan, the ALISE treasurer. ALISE processes approximately 1,000 checks annually with a lock box system at Bank of America (which is why financial correspondence is sent to a different address). ALISE's accounting staff prepare quarterly financial statements for the ABOD that include a balance sheet; statement of functional expenses; and statement of revenues, expenses, and change in fund balance. Additionally, the ALISE treasurer has access to any and all financial transactions as she/he desires, as does any other member of the ABOD.

Management

ALISE's management firm provides an address and reasonable

office equipment, office space, and a technologically advanced, state-of-the-art computer system. ALISE staff process membership renewals in a timely manner and generate approximately 1,500 invoices each year. Staff provide assistance in soliciting new personal and institutional memberships and in devising additional strategies to recruit and retain existing members. It is the responsibility of ALISE staff to properly answer all questions regarding membership or any other ALISE initiative or issue as requested. Management is provided for two Board meetings annually, and in general, consultation and suggestions are provided so the organization might be managed more effectively and better serve the needs of its members.

ALISE Communications

Tamara Faggen, in her role as director of communications, in tandem with Steve Hennessey of the ALISE staff, works with the various committees in preparing the different communication tools ALISE prepares annually. Staff are working on a major redesign of the Annual Membership Directory to make it a much more user-friendly resource. Tamara and Steve also worked with Joe Mika and his committee on all of the printed materials for the conference, including creating the graphic image that was used for the Washington, D.C., conference. Additionally, Tamara managed the printing aspect of the Statistical Report.

Convention Management

ALISE staff are also responsible for the planning and execution of the annual conference, which includes myriad details, under the direction of the Conference chairman (currently Joe Mika). Together, staff coordinates all aspects of marketing, exhibitor solicitation and sponsorship, logistics, registration, and on-site management.

You are strongly encouraged, if you are ever in the Greater Washington, D.C., metropolitan area, to stop by the ALISE office. We are strategically located about 7 miles from Washington-Dulles International Airport and about 20 miles from the heart of the downtown Washington business district. ALISE staff would be happy to show you around.

Our approach to managing the day-to-day affairs of ALISE is a team approach. Executive Director Randall Price and Administrator Maureen Thompson are both continually aware of the needs of the organization. Both are poised to "pinch-hit" for the other in the event of illness, vacation, or conflicting commitments. And continuous, direct communication with members of the ABOD and other volunteer leaders is critical to the success of the organization. The key to our prosperity is offering individual expertise (general management, accounting, marketing, event planning, professional reception) to an organization at very competitive prices. The overhead and high-tech office equipment are shared by the various organizations, allowing dramatic savings to ALISE. If you have any questions regarding any of the contents of this article, please do not hesitate to contact the ALISE national office. We are your staff, and we wish nothing better than to serve you and your membership needs in whatever way we can.

GENERAL INFORMATION

The Capital Hilton

16th and K Streets, N.W., Washington, D.C. 20036
Phone: (202) 393-1000 or 1 (800) HILTONS

Registration

Registration will be open throughout the meeting. See the program agenda for opening and closing times each day.

Various annual reports, awards, research grant application information, and other items of interest are available in the registration area.

Registration Materials /Name Badges

All conference materials will be distributed at the registration desk. You will receive a name badge and official conference program.

Look for special ribbons identifying first-timers at the ALISE Conference, those seeking job interviews, and schools and programs recruiting new faculty. Special ribbons also identify speakers and presenters, officers, international guests, award winners, juried paper presenters, and press.

Social Events/Awards Luncheon

Your conference registration badge provides entry for all social events *except* the Awards Luncheon on Thursday, January 11. Prepaid luncheon tickets will be distributed with your registration materials. Luncheon tickets (\$20) may be purchased at the conference registration desk until noon Tuesday.

Timothy W. Sineath (Kentucky) will host the ALISE Suite. ALISE appreciates this service to the association.

Dine-around with an ALISE Host

Dine-around with an ALISE Host is Dutch-treat dining at nearby restaurants. Sign up on sheets located on the ALISE message board in the conference registration area for one of the following opportunities:

- Wednesday evening, hosted by Diane Barlow (Maryland), at **McCormick and Schmick's** (seafood), a few short blocks from the hotel. Meet at 5:15 p.m. in the hotel lobby.
- Thursday evening, hosted by Peter Liebscher (Catholic), at **Osteria Goldoni** (Italian cuisine), a few short blocks from the hotel. Meet at 5:15 p.m. in the hotel lobby.

Information on restaurants located within a short distance of the hotel will also be available.

Resolutions

Resolutions for consideration at the Annual Business Meeting must be handed in at the conference registration desk before 10 a.m. on Thursday, January 11, 2001, in accordance with the policies and procedures of the association:

Written copies of all resolutions, including resolutions contained in committee reports, must be given to the membership before they are to be presented to that body for action. To permit this, text must be submitted to the Organization, By-laws, and Resolutions Committee 24 hours in advance of presentation. A resolution that has fiscal implications must be

submitted to the President as well as the Organization, Bylaws, and Resolutions Committee 24 hours before it is to be voted on so that the Budget Committee can provide information on fiscal implications.

A resolution approved January 13, 1979, limits resolutions to statements on substantive matters relating to library education and the profession of librarianship to be voted on by the membership.

The consideration of resolutions will be a standing agenda item at each Board meeting.

Resolutions forms are available at the conference registration desk.

Placement Service

ALISE is providing the opportunity for member schools and programs to conduct job interviews with interested candidates. This placement service features Job Candidate Notebooks and Positions Open Notebooks for prospective employers and applicants to review. Arrangements for interviews should be made directly between candidates and recruiters, using the Placement Service message board in the registration area.

Several rooms have been reserved for interviews during the conference. When you have made your appointments, check at the registration desk to verify your interview room. *Please check the message board often.*

Placement Service participants are encouraged to observe the designated "no conflict" times during general sessions.

Message Center/Lost and Found

Your family and staff can reach you through The Capital Hilton switchboard, (202) 393-1000. A bulletin board in the registration area will be used for messages and may also be used to leave notes for ALISE attendees.

Valuables left in meeting rooms or turned in by attendees to The Capital Hilton staff may be reclaimed by using the house phones to call either Housekeeping or the Bellman/Concierge. Notations of items found will be posted on the ALISE message board.

Please check the board from time to time for messages. (There is a separate message board for the Placement Service.)

Storage of Items

Temporary storage of ALL items (briefcases, slides, coats, purses, luggage, laptop computers, etc.) must be done through The Capital Hilton's Bell Captain, located near the hotel's registration desk.

Conference Evaluation

The ALISE Board of Directors, the executive director, and future program chairs appreciate your review of the 2001 ALISE conference. Evaluation forms are included in each conference packet. If you wish to submit them after the conference, please send them to ALISE, 11250 Roger Bacon Drive, Suite 8, Reston, VA 20190-5202.

2001 ALISE CONFERENCE PROGRAM



Note: Room locations are listed under time or next to name of event.

TUESDAY, JANUARY 9

noon–7:00 p.m. **Registration**

Upper lobby

noon–6:00 p.m. **Placement Services**

Upper lobby

Note: Interview rooms are available until 10:00 p.m.

noon–5:00 p.m. **ALISE Board of Directors Meeting**

Massachusetts

PRECONFERENCE WORKSHOPS—preregistration required

2:00–5:00 p.m. **Successful Proposal Writing and Grantsmanship: Priorities and Perspectives of Funders**

Congressional

Fee: \$80*

Organizers: Leigh Estabrook and Linda Smith (Illinois)
Abstract: **Priorities and Perspectives of Federal Agencies:** A panel presentation with representatives from NSF, Department of Education, IMLS, and one or two other agencies, such as NIH or the Department of Commerce.
Priorities and Perspectives of Foundations and Other Nonprofit Agencies: A second panel presentation with representatives from such organizations as the W. K. Kellogg Foundation, Lila Wallace Reader's Digest Fund, CLIR, OCLC, and the H.W. Wilson Foundation.
*The Graduate School of Library and Information Science, Illinois, has provided a total of \$1,000 in scholarship assistance (on a first-come, first-funded basis) to nontenured faculty and doctoral students (at \$80 per person) attending this workshop.

2:00–4:00 p.m. **Incorporating "Sustainability" Into LIS Curriculum**

Congressional

Cancelled

Legislative Advocacy and LIS Education

Fee: \$30

Ohio

Organizer: Samuel Trosow (UCLA) on behalf of the ALISE Governmental Relations Committee
Speakers: Betty Turock (Rutgers), Emily Sheketoff (ALA), Mary Alice Baish (AALL), and Charles R. McClure (Florida State)

Abstract: Workshop participants will learn about the legislative agenda of library associations and gain insights into how the library community conducts its legislative advocacy work. Substantive areas to be covered include library funding issues, Internet filtering, distance education, licensing and database legislation, and issues concerning permanent public access to government information. Participants will gain an overview of the important developments from

the 106th Congress and an advance glimpse into the prospects for the 107th Congress. This material will then be placed within the context of the library and information science curriculum.

4:00–6:00 p.m. • **7 Ways to CourseInfo: Iterations of Online Delivery for Library Education**

Fee: \$50

Ohio

Organizer: Lesley Farmer (UC–Long Beach)
Abstract: This workshop discusses a variety of ways to use CourseInfo and other online course "delivery systems" in library education. Issues about online presence are explained. CourseInfo is presented as a model; its features are explained, along with implications for instruction and learning. Pointers for course creation online are given, plus implementation options, issues, distance learning opportunities, and limitations.

• **Preparing for the Employment Interview—A Seminar for Doctoral Students** (Fee included in registration for doctoral students) Senate

Organizer: Blanche Woolls (San Jose State)

Speakers: Roberta Shaffer (Texas–Austin) and Robert Grover (Emporia)

Abstract: Participants will learn the components of a good application letter and resume; determine items for a portfolio; consider how to build additional experiences; discuss how to "investigate" the interview team, the other faculty, and the school site; develop strategies to prepare for a visit; learn the perquisites expected in a university community; explore interview techniques in a nonthreatening environment; and decide appropriate questions to be asked during the interview.

6:00–7:00 p.m.

South American AB

Early-Bird Reception

7:00–9:00 p.m.

Congressional

ALISE Committee Meetings I

9:00–10:30 p.m.

ALISE Suite: open

Host: Timothy W. Sineath (Kentucky)

WEDNESDAY, JANUARY 10

8:00 a.m.–6:00 p.m. **Registration**

Upper lobby

8:00 a.m.–5:00 p.m. **Placement Services**

Upper lobby

Note: Interview rooms are available until 10:00 p.m.

7:30–8:45 a.m.

First-timer's Orientation and Continental Breakfast

Pan American

Moderators: Jane Robbins (Florida State) and Ann Prentice (Maryland)

Hosts: Retirees SIG and chair, International Relations Committee

9:00–10:15 a.m.

General Session I

South American AB

- **Welcome:** James M. Matarazzo (Simmons), ALISE president, 2000–2001
- **Introduction:** Joseph J. Mika (Wayne), chair, ALISE 2001 Conference Program Planning Committee
- **Keynote Speakers:** Donald M. Norris, president, Strategic Initiatives, Inc., **“Predictions for Graduate Education Beyond 2000”**; and G. Wayne Clough, president, Georgia Institute of Technology, **“One University President's Response and Predictions”**

10:15–10:45 a.m.

Break

Upper lobby

10:45 a.m.–noon

Juried Papers I

South American AB

Convenor: Ronald Powell (Wayne)

Topic: **Recent Trends in LIS Education**

- **Hong Xu** (Pittsburgh) and **Hsin-liang Chen** (Texas–Austin) **“Systems Librarians: What Do They Do and How to Educate Them”**
Abstract: This paper will investigate employers' expectations and satisfaction with newly hired systems librarians and systems librarians' job responsibilities and core competencies.
- **James Carey** (South Florida), **“Implications of Learner-Centered Pedagogy for Programmatic Efficiency and Accountability in Library and Information Science Education”**
Abstract: The paper reviews a confluence of foundational theories that support learner-centered pedagogies in library and information science education and suggests a model for managing programmatic requirements for efficiency and regional/professional accountability while maintaining the flexibility and power of a learner-centered philosophy.
- **Christine Pawley** (Iowa) and **Patricia Willard** and **Concepcion S. Wilson** (New South Wales), **“Trends and Transformations: The Changing Face of Library and Information Studies in Australia”**
Abstract: The researchers describe the current state of LIS education in Australia and speculate on its future, drawing on documentary and statistical data as well as interviews with faculty to identify trends in programs, student numbers, institutional restructuring, and political and economic pressures.

noon–1:30 p.m.

- **Lunch on your own—colleague networking**
- **LISDEC** (Pan American)

noon–1:15 p.m.

ALISE School Representatives Lunch with ALISE Board

Congressional

(by invitation)

1:30–3:00 p.m.

Concurrent Sessions:

- **SIG: Technical Services** (California)
 Convenor: Deborah Barreau (Catholic)
 Topic: **Library Systems and the LIS Curriculum**
 Speakers: Larry Osborne (Hawaii), Hong Xu (Pittsburgh), Kyung-Sun Kim (Missouri), and Chris Brown-Syed (Wayne)
Abstract: This session will focus on a new generation of integrated library systems and how they are impacting the library and information science curriculum. Some schools maintain labs for hands-on instruction and for projects in database management, MARC conversion, and OPAC design and use. Others have broadened the curriculum to include courses in telecommunications and networking, metadata, and Web design. Panelists will focus on how these second-generation, network-based library systems have impacted instruction in technical services. Discussion will include what is missing as well as what is being taught.
- **SIG: Research Methods** (Ohio)
 Convenor: Colleen Cool (Queens)
 Topic: **Future Research Agendas in LIS**
 Speakers: Bryce Allen (Missouri), Peiling Wang (Tennessee), Marija Dalbello (Rutgers), and Shelly Warwick (Queens)
Abstract: Where is the research community in LIS headed? The purpose of this panel is to explore what's new on the research horizon in our field and to discuss appropriate methodologies for these emerging research agendas. Panelists will discuss what they perceive to be important new research areas in LIS, along with particular issues and challenges associated with them: Bryce Allen, “Information Interaction Research: Issues and Challenges”; Peiling Wang, “Methodologies and Methods for User Behavioral Research”; Marija Dalbello, “Genre as a Hermeneutical Frame of Reference for Research: Textual Communities in Print and Electronic Reading Environments”; and Shelly Warwick, “Future Research Agendas in Intellectual Property and How They Are Relevant to LIS.”
- **SIG: New Faculty** (Massachusetts)
 Convenor: Shelly Warwick (Queens)
 Topic: **Tenure: The Rules**
 Speakers: Marcia J. Bates (UCLA) and Judith Weedman (San Jose); Responders: Jane Robbins (Florida State) and Michael Eisenberg (Washington)
Abstract: The title for this session is tongue-in-cheek, as the rules for getting tenure, such as they are, are highly variable from one institution and one dean to another. Faculty from both research-intensive and teaching-intensive universities will address the “rules” for tenure and the variations among institutions. Further, the panel will cover some good principles and practices that can be employed in almost any circumstance imaginable that should increase one's chances of getting tenure. A group discussion will follow speakers and responders.

- **Database Searching** (*Federal A*)
Convenor: J. Stephen Downie (Illinois)
Topic: **Learning to Retrieve Multimedia Objects**
Abstract: This session deals with the problems of teaching young professionals the new methods of retrieving multimedia objects (pictures, maps, recordings, scores, etc.) from content-based databases. I would like to invite professors, professionals, and instructors in the area of database searching to share with the participants the techniques, lesson scenarios, and examples that they draw upon as they teach this new brand of searching and retrieving.

3:00–4:00 p.m. Networking Break and Exhibitors Showcase
Upper lobby

Note: During the networking break, unassigned tables will be available for groups wishing to announce topics for discussion.

Feature Posters:

Undergraduate Programs in LIS:

- Bertram C. Bruce, Michelle Kazmer, Melanie Kimball (Illinois)
- Don Latham (Florida State)
- Claire McInerney (Rutgers)

Discussions:

- **Table 1:** “25 Ideas That Need to Be Researched,” Virginia Papandrea (Wayne)
- **Table 2:** “So You’d Like to Be a Dean,” Jane Robbins (Florida State)
- **Table 3:** “Reconsidering the Teaching of Reference Service,” Johan Koren (Dominican)

4:00–5:30 p.m. Juried Papers II

South American AB

Convenor: Charles Hildreth (Long Island)

Topic: **Teaching: New Models and Technologies**

- **Linda Smith, Sarai Lastra, and Jennifer Robins** (Illinois), “**Teaching Online: Changing Models of Teaching and Learning in LEEP**”
Abstract: This paper draws data from questionnaires, follow-up interviews, and observations of classes to characterize how teaching in an online environment leads to changes in how faculty, students, and teaching assistants interact and the roles these groups play in instruction.
- **Don Latham and Stephanie Maatta** (Florida State), “**Practicing What We Teach: A Descriptive Analysis of Library Services for Distance-Learning Students in ALA-accredited LIS Schools**”
Abstract: This paper offers a descriptive analysis of three key areas related to library services for students in distance-learning programs at ALA-accredited LIS schools: (1) the availability and accessibility of such services, (2) the training of library personnel involved in providing those services, and (3) the evaluation of those services by individual libraries.
- **Judith Robinson and Thomas L. Jacobson** (Buffalo), “**Integrating LIS into an Organizational IS/IT Environment**”
Abstract: A new master’s degree in the University of

Buffalo’s School of Information and Library Studies will engage faculty from its two departments, Communication and Information and Library Studies, to train students in information systems design and implementation, starting with organizational needs assessment and ending with evaluation.

- **Elizabeth Buchanan, Malore Brown, Dietmar Wolfram, and Hong Xie** (Wisconsin–Milwaukee), “**A Systematic Study of Web-based and Traditional Instruction in an MLIS Program: Success Factors and Implications for Curriculum Design**”
Abstract: Traditional and Web-based learning environments in an MLIS program setting are systematically compared in a mixed-method study employing qualitative and quantitative data collected from participating courses, students, and instructors.

5:30–6:30 p.m. Liaisons to Other Organizations and ALISE Board Reception
Senate
(by invitation)

5:30–7:00 p.m. Dine-around with ALISE Host
Sign up in conference registration area

7:00–8:00 p.m. Research Award Presentations
South American AB

Moderator: Delia Neuman (Maryland), chair, Research Committee

Awards:

- **Eugene Garfield–ALISE Doctoral Dissertation Award:** Priscilla Coit Murphy (North Carolina–Chapel Hill), “What a Book Can Do: Silent Spring and Media-borne Public Debate”; Margaret Blanchard, advisor
- **ALISE–Bohdan Wynar Research Paper Award:** George D’Elia, Corinne Jorgensen, and Joseph Woelfel (Buffalo) and Eleanor Jo Rodger (Urban Libraries Council), “The Impacts of the Internet on Public Library Use: An Analysis of the Current Consumer Market for Library and Internet Services”
- **ALISE Methodology Paper Award:** Diane H. Sonnenwald and Barbara M. Wildemuth (North Carolina–Chapel Hill), “Investigating Information Seeking Behavior Using the Concept of Information Horizons”

8:00–9:15 p.m. Concurrent Sessions:

- **SIG: Associate Deans/Directors** (*Massachusetts*)
Convenors: Kathleen Burnett and Don Latham (Florida State)
Topic: **Playing the Supporting Role in Managing Growth and Change**
Speakers: Michael Eisenberg and Harry Bruce (Washington), Jane Robbins and Kathleen Burnett (Florida State), and Leigh Estabrook and Linda Smith (Illinois)
Abstract: Many schools are currently or will soon be managing significant growth and change. The addition of new degree programs, forays into undergraduate education, and the expansion of delivery formats are just some examples of the ways that schools are growing and changing. Assistant and associate deans and directors are

faced with new challenges that may require new role definitions and strategies for managing growth and change. The panel of three deans/directors and their assistants or associates will share their experiences, followed by an open discussion forum.

- **SIG: Distance Education** (*Pan American*)
Convenors: Nancy Thomas and Cecilia Salvatore (Emporia)
Topic: **Cognitive and Cultural Implications of Web-based Learning and Distance Education**
Speakers: Julie Tallman (Georgia); Kyung-Sun Kim, Linda Esser, and Joi Moore (Missouri); and Mirah Dow and Cecilia Salvatore (Emporia)
Abstract: As Web-based teaching continues to serve a major role in distance education, concern for its implications for students' learning processes and environments increases. A panel of researchers who focus on distance education will discuss the cognitive and cultural implications of Web-based learning and distance education, specifically for the student.
- **SIG: Gender Issues** (*Senate*)
Convenor: Michele Besant (Florida State)
Topic: **Women Research Participants: Locating Their Voices**
Speakers: Clara M. Chu (UCLA), Elfreda A. Chatman (Florida State), and Louise S. Robbins (Wisconsin–Madison)
Abstract: Finding and situating women research participants and subjects can present distinct challenges. How does gender interplay with other potential issues of marginalization? How does a researcher address voice in write-ups? Panelists will share their experiences of “locating” women in a variety of research contexts: Clara M. Chu, “Twice Minorities as Research Subjects and Cultural Keepers: Chinese Women in Latin America”; Elfreda A. Chatman, “Exploring Gender Effects on Theme and Voice in Marginalized Populations”; and Louise S. Robbins, “Silence, Whispers, Legend, and Letters: The Voice of Miss Ruth Brown.”
- **SIG: Curriculum** (*Ohio*)
Convenors: Marija Dalbello (Rutgers) and Luz M. Quiroga (Hawaii)
Topic: **Curricular Transformations and the Marketplace**
Speakers: Lisa M. Covi and Kay Vandergrift (Rutgers) and Thomas J. Froehlich (Kent)
Abstract: How are LIS schools addressing the needs of the changing workforce and responding to opportunities of that expanding job market? The panel explores different angles of this issue, observing the discourses of the job market, the students' perspectives, the curricular responses, and the effects of these changes on disciplinary boundaries: Luz Quiroga and Marija Dalbello, “Technology: What the Employers Want and What the Students Think the Employers Need”; Lisa M. Covi, “Evolving Our Discipline: The Relationship Between the Changing Market for Information Professionals and the Identity of Our Discipline”; Thomas J. Froehlich, “The Interdisciplinary Master of Science Degree in Information Architecture and Knowledge Management at Kent

State University”; and Kay Vandergrift, “The Dichotomy of Transformation and Expectation: The Undergraduate Information Technology Program.”

- 8:00–8:15 p.m. **Poster Setup for Doctoral Students' Poster Session**
Presidential
- 8:15–9:15 p.m. **Closed Doctoral Poster Judging—ALISE Research Committee**
Presidential
- 9:15–10:30 p.m. **Doctoral Student Reception with Poster Session: Doctoral Student SIG**
Supported by Schools/Programs (cash bar)
Presidential
- 10:00–11:00 p.m. **ALISE Suite: open**
Host: Timothy W. Sineath (Kentucky)

THURSDAY, JANUARY 11

- 8:00 a.m.–6:00 p.m. **Registration**
Upper lobby
- 8:00 a.m.–5:00 p.m. **Placement Services**
Upper lobby
Note: Interview rooms are available until 10:00 p.m.
- 7:30–9:00 a.m. **ALISE Committees II (2000 and 2001 Committees)**
Federal AB
 2001 chairs preside; continental breakfast served
- 9:00–10:15 a.m. **Concurrent Sessions:**
 - **Juried Papers III** (*South American AB*)
Convenor: Jack Glazier (Emporia)
Topic: **LIS Education and the Users of Information**
 - **Renee Jefferson** (South Carolina), “**Mapping Needs of Library and Information Science Professionals**”
Abstract: The purpose of this research project is to examine educational needs of library and information science professionals that may be met through distance-education technologies.
 - **Eino Sierpe** (Southern Connecticut), “**Gender and Participation in Computer-mediated LIS Education**”
Topical Discussions: an Examination of JESSE, the Library/Information Science Education Forum
 - **Dan O. O'Connor** and **Soyeon Park** (Rutgers), “**Research Methods as a Core Competency**”
Abstract: If LIS were to adopt core competencies common to all programs, if LIS were to be compatible with similar disciplines and professional programs at their own institutions, and if LIS were to meet the articulated needs of the professional associations it is allied with, then it becomes reasonable to require research methods as a core competency across all accredited programs that would also be expected to have a sustained benefit to our field by increasing the number of researchers and the number of consumers of this research.

- **ALA Task Force on External Accreditation** (*California*)
Speaker: Susan K. Martin (Georgetown) and Task Force members
Abstract: As a result of the 1999 Congress on Professional Education, ALA created a task force to examine the existing accreditation structure, and if found wanting, to make recommendations regarding a new structure. Task force members will present the results of their work to date and engage in discussion with conference attendees. **Note:** the charge of this task force is restricted to structure; therefore, the assumption is that standards and process are not affected.

10:15–10:45 a.m.

Break

Upper lobby

Generously sponsored by **ARL**

10:45 a.m.–noon

Concurrent Sessions:

- **SIG: Multicultural and International Library Education—Part I** (*Massachusetts*)
Convenors: Clara M. Chu (UCLA) and Ismail Abdullahi (Clark–Atlanta)
Topic: **Deconstructing Multiculturalism: Global, National, Post-Colonial, and Diaspora Perspectives**
Speakers: Lorna Peterson (Buffalo), Kirsti Nelson (Western Ontario), and Ismail Abdullahi (Clark–Atlanta);
Respondent: Cecilia Salvatore (Emporia)
Abstract: The struggle for human rights and dignity is a global activity taking place within and outside of national boundaries. Discrimination, persecution, and injustice unfortunately exist all too strongly in our world, and the fight to achieve equality, freedom, and justice has become global, using a common language—multiculturalism or diversity. But what does multiculturalism mean, and how can it be defined globally? National responses to multiculturalism are as different as nations themselves, reflecting their history, governance, and policy positions. This program will address the differences in defining multicultural populations, public policy regarding resident oppressed groups, and immigrant librarians regarding multicultural populations: Lorna Peterson, “The Challenges of Defining Multiculturalism Globally”; Kirsti Nelson, “The Canadian Perspectives”; and Ismail Abdullahi, “The European Perspectives.”
- **SIG: Doctoral Students** (*California*)
Convenors: Laurie Bonnici and Stephanie Maatta (Florida State)
Topic: **From ABD to Assistant Professor: Getting Through, Getting the Job**
Speakers: Panel presentation
Abstract: Have you ever wondered “Is my research topic important? Am I ready for qualifying exams? Will I ever complete the dissertation? Do I have the right experience? What can I expect at an interview? Is there a job that matches my qualifications? Can I negotiate a job offer?” Doctoral students face many challenges and new experiences throughout the degree-seeking and job-search processes. Three new faculty members will share their experiences and strategies for successfully completing their doctoral studies and obtaining a faculty

position. Speaking from experience, panelists will address common problems faced by doctoral students. The panel will field questions from SIG participants.

- **SIG: Archives and Preservation** (*Ohio*)
Convenor: Jeanette Bastian (Simmons)
Topic: **Mapping the Electronic Face of Archival Education**
Speakers: Richard J. Cox (Pittsburgh), Phillip B. Eppard (Albany), Susan E. Davis (Wisconsin–Madison), and Tanya Marshall (Maryland)
Abstract: As the creation and/or presentation of records becomes increasingly electronic, strategies and techniques for teaching archivists to provide accessibility and service in this environment are evolving rapidly and individually. This roundtable of archival educators shares some of these strategies, explores pitfalls and problems, and speculates on future educational trends.
- **SIG: Continuing Education** (*Pan American*)
Convenor: Ellen Perlow (Texas Woman’s)
Topic: **Assistive Technology and Accessibility: Essential LIS Core Competencies**
Speakers: Ellen Perlow and Mary Cissell (Texas Woman’s)
Abstract: Through demonstration and discussion, the audience will actively learn to appreciate the universality of assistive technology as well as accessibility and related diversity issues, within the core curriculum of every school and in continuing education. Participants will realize how the integration of assistive technology and accessibility promotes the diversity, technology, and recruitment initiatives that are top priorities of both ALISE and every school. Handouts and resource lists will be provided.
- **Collaborate to Innovate: The Association of Research Libraries Online Lyceum** (*South American A*)
(The Association of Research Libraries’ proposal to LIS-seeking potential partners)
Presenter: ARL
Abstract: The ARL Online Lyceum is a Web-based learning environment integrating the innovative use of technology and time-tested OLMS program content. Partnerships with Southern Illinois University at Carbondale and with Australia and New Zealand will be described. Ideas will be outlined about ways the ARL Online Lyceum and ALISE and individual library schools could consider working together to enhance the education of librarians and the continuing professional development of librarians and staff. A demonstration of the Online Lyceum will follow.

noon–1:30 p.m.

The 2001 ALISE Awards Luncheon

Federal AB

Generously underwritten by **LEXIS-NEXIS** (ticket required)

Awards and Honors Committee Chair and Presenter
Norman Horrocks (Scarecrow Press):

- **ALISE Service Award:** Shirley Fitzgibbons (Indiana)
- **ALISE Professional Contribution Award:** Jane B. Robbins (Florida State)
- **ALISE Excellence in Teaching Award:** Kay Vandergrift (Rutgers)

- **ALISE Pratt-Severn Award:** Sandra Erdelez (Texas–Austin) *Research Committee Chair and Presenter* Delia Neuman (Maryland): (Award sessions: see pages 8 and 12)

- **Eugene Garfield–ALISE Doctoral Dissertation Award:** Priscilla Coit Murphy (North Carolina–Chapel Hill)

- **Research Grant Awards**

2001: Ingrid Hsieh-ye (Catholic)

2000: Don Fallis and Martin Fricke (Arizona)

- **ALISE-Bohdan Wynar Research Paper Award:** George D'Elia, Corinne Jorgensen, and Joseph Woelfel (Buffalo) and Eleanor Jo Rodger (Urban Libraries Council)

- **ALISE Methodology Paper Award:** Diane H. Sonnenwald and Barbara M. Wildemuth (North Carolina–Chapel Hill)

- **ALISE Dissertation Award Certificates of Recognition:** Daniel G. Dorner (Western Ontario), J. Stephen Downie (Illinois), and Richard William Kopak (Toronto)

Presenter Terry Noreault, vice president, OCLC:

- **OCLC/ALISE Library and Information Science Research Grants:**

Hong Xu and Arlene Taylor (Pittsburgh), "Identification of Resource Types of Web-accessible Information"

Hong Xie (Wisconsin–Milwaukee), "Ease of Use Versus User Control: Desired Interface Model and Functionalities for Web-based Online Databases"

Anna Perrault (South Florida), "Global Collective Resources: WorldCAT as the Foundation for International Library Cooperation"

1:30–3:00 p.m.

Concurrent Sessions:

- **Juried Papers IV** (*South American B*)

Convenor: Louise S. Robbins (Wisconsin–Madison)

Topic: **Core Values in LIS**

- **Wallace Koehler** (Oklahoma), "Core Values as Defined by the LIS Discipline"

- **Christopher Khoo, Susan E. Higgins, Schubert Foo, and Sey-Peng Lim** (Nanyang Technological, Singapore), "A Cluster Analysis of LIS Students Based on Their Choice of Subjects"

Abstract: A cluster analysis of students based on their choice of subjects found two well-defined clusters, which can be characterized as the library-oriented cluster and the IT-oriented cluster, as well as several sub-clusters. The relationship between these clusters of students and LIS specializations is analyzed.

- **Roma Harris and Margaret Ann Wilkinson** (Western Ontario), "(Re)Positioning Librarians: How Young People View the Information Sector"

Abstract: Young people beginning their university studies have views about the information sector in which there are clear occupational winners and losers; regrettably, they perceive librarianship in a particularly dim light, especially in view of rather more optimistic government labor force projections.

- **Woo-seob Jeong** (Florida State), "Locating Information Science: Changes in Ph.D. Dissertations During the Past Three Decades"

Abstract: Based on the "co-subject" analysis of Dissertation Abstracts database, this study shows

that "information science" has maintained its consistent position away from "library science" and "computer science" in an intellectual space during the past 30 years.

- **Council of Deans, Directors, and Program Chairs**

(California)

Convenor: Leigh Estabrook (Illinois)

Topic: **Current Management Issues: A Problem-Solving Meeting**

Abstract: This is a forum for chief academic officers of LIS schools to share strategies for solving administrative problems. The following issues will be addressed:

1. Faculty development: protecting, mentoring, and retaining the best; motivating the inactive researchers; finding ways to support retirement.
2. Intellectual property rights of course materials. How do different schools approach course materials posted on their Web sites? Are these typically copyrighted? What are the long-term implications of using an open model over a restricted one?
3. External relations: establishing collaborative relationships with other units and departments on our campuses, developing undergraduate programs, surviving/thriving changes at the top.
4. Managing new programmatic ventures: distance education and undergraduate programs.

- **SIG: Multicultural and International Library Education—Part II** (*South American A*)

Convenors: Ismail Abdullahi (Clark–Atlanta) and Clara M. Chu (UCLA)

Topic: **Deconstructing Multiculturalism: Global, National, Post-Colonial, and Diaspora Perspectives**

Speakers: John Agada and Cecilia Salvatore (Emporia), Clara M. Chu (UCLA), and Malore Brown (Wisconsin–Madison); *Respondent:* Lorna Peterson (Buffalo)

Abstract: The second panel examines specific aspects of multicultural society and links them to research or practice. More recent immigration patterns, post-colonial and other political status, and interethnic and interracial marriage are only some of the characteristics that are reshaping the make-up of peoples who constitute multicultural societies.

These new multicultural notions create new knowledge that needs to be incorporated into established knowledge and organization systems and produce new experiences and identities that suggest different information needs. These changes represent new emerging voices that need to be heard and understood by both educators and practitioners.

The following topics will be addressed: John Agada, "Post-colonial Perspectives"; Cecilia Salvatore, "Situating Guam"; Clara M. Chu, "Preservation of Chinese Culture in Latin America"; and Malore Brown, "Multicultural and International Literature for Young Adults."

3:00–4:00 p.m.

Networking Break and Exhibitors Showcase

Upper lobby

Note: During the networking break, unassigned tables will be available for groups wishing to announce topics for discussion.

Feature:

IMLS Grants Showcase:

- George D’Elia (Buffalo), “Impact of the Internet on Public Library Use”
- Sydney Pierce (Catholic), “Virtual Library Branch”
- Charles R. McClure and John C. Bertot (Florida State), “1999 Findings, 2000–2001 Study”
- Danny P. Wallace (Oklahoma), “1999 Findings”
- Evelyn H. Daniel (North Carolina–Chapel Hill), “Plant Information Center”
- Diane Walster and Carol Doll (Wayne), “1999–2000, 2000–2001 Urban School & Public Library Collaboration”

Discussions:

- **Table 1:** “10 Best Ways to Use Web Pages to Teach,” Charles Hildreth (Long Island)
- **Table 2:** “Pedagogical Help for New Faculty,” (open)
- **Table 3:** “Using OCLC FirstSearch to Teach Online Reference Skills,” Joan Giglierano (OCLC)

(1) the implications of metadata for LIS curricula, and (2) the priorities in metadata research. Data analysis after a four-round study with approximately 30 experts will lead to suggestions about how to cover metadata in LIS curriculum and how to create a systematic, balanced research approach to advance knowledge about metadata.

- **2000 ALISE Research Grants Report**
Don Fallis and Martin Fricke (Arizona),
“Verifiable Health Information on the Internet”

Abstract: The Internet has the potential to be an extremely efficient means for people to acquire knowledge on all sorts of subjects. However, since almost anyone can post almost anything on the Internet, the Internet also has the potential to be an extremely unreliable information source.

This study, which looked specifically at Web sites that provide information about managing fever in children at home, tested several of the proposed indicators of accuracy. By identifying which of the proposed indicators are good indicators of accuracy and which are not, the results should help people distinguish accurate from inaccurate health information on the Internet.

- **SIG: Library History** (*California*)
Convenors: Abulfazal Kabir (Clark–Atlanta) and Melanie Kimball (Illinois)
Topic: **Emerging Trends in Historical Research in LIS**
Abstract: Panel: Cheryl Knott Malone (Illinois), “Popular Culture as Historical Evidence: Re-Viewing *Desk Set*”; R.N. Sharma (West Virginia State), “Library Education: An International Perspective—the Indian Subcontinent”; Andrew B. Wertheimer (doctoral student, Wisconsin–Madison), “Reflections on Oral History as a Primary Source: Pragmatic and Historical Implications for Historical Researchers in LIS.”
- **SIG: Teaching Methods** (*Ohio*)
Convenor: Sanda Erdelez (Texas–Austin)
Topic: **Using Web-based Courseware in LIS Classes**
Speakers: Bertram C. Bruce (Illinois), Elizabeth Buchanan (Wisconsin–Milwaukee), and Charles Hildreth (Long Island)
Abstract: Web-based courseware is being extensively used for teaching and course management in many LIS schools. The panelists will demonstrate the use of several commercial and in-house-developed applications in their courses and present their individual views about the impact of these tools on their teaching.
- **SIG: Youth Services** (*Massachusetts*)
Convenor: Sue Easun (Scarecrow Press)
Abstract: A “fireside” chat with Carolyn Breedlove of the National Educational Association, followed by a hands-on tour of the award-winning Making the Grade technology lab. Further information and instructions on how to get to NEA will be available at the ALISE registration desk and, upon request, from the convenor.
- **SIG: Multicultural** (*Pan American*)
Convenor: Clara M. Chu (UCLA)
Topic: **Breaking Barriers: The BCALA/ALISE Project**

4:00–5:30 p.m. General Session II

South American AB

Reconsidering LIS Education:

- **“Core Competencies—Implications for LIS Education”:** Sharon A. Hogan (Illinois–Chicago), chair, ALA Core Competencies Task Force, will discuss the latest information from the ALA Task Force working on competencies for the profession.
- **“Core Values—Implications for LIS Education”:** Donald J. Sager (Highsmith), chair, ALA Core Values Task Force, will discuss the ALA-initiated study and action on definition and identification of core values for the profession during 1999–2000. The chair of the ALA Task Force will report on research, development, and feedback from within the profession on this project, and the implications core values will have on LIS education.
- **“Congress on Professional Education II—Continuing Education”:** James G. Neal (Johns Hopkins), chair, ALA Congress on Professional Education/Continuing Professional Education, will present the findings and recommendations of the 2nd Congress on Professional Education, held in Chicago in November 2000, which focused on Continuing Professional Development.

5:30–6:30 p.m. Reception for Past Presidents

New York

(by invitation)

5:30–7:00 p.m. Dine-around with ALISE Host

Sign up in conference registration area

7:00–9:00 p.m. Concurrent Sessions:

- **Research Grant Awards** (*South American AB*)
Convenor: Delia Neuman (Maryland)
- **2001 ALISE Research Grants Report**
Ingrid Hsieh-yee (Catholic), **“A Delphi Study on Metadata: Curriculum Implications and Research Priorities”**
Abstract: This study proposes to use the Delphi technique to collect metadata experts’ views on

on Recruiting and Retaining Minority Students

Speakers: Howard McGinn and Greg Reese (Black Caucus, ALA)

Abstract: An investigation of the academic and student support barriers.

9:00–10:30 p.m.

Federal AB

All-Conference Reception and Exhibitors Showcase

10:30–11:00 p.m.

ALISE Suite: open

Host: Timothy W. Sineath (Kentucky)

FRIDAY, JANUARY 12

8:00 a.m.–noon

Upper lobby

- **Registration**
- **Placement Services**

Note: Interview rooms are available until 5:00 p.m.

7:30–8:30 a.m.

- **Bibliographic Instruction Proposal to LIS Schools—by the Gale Group**

(South American AB)

Abstract: The Gale Group offers gratis access to a wide range of its most popular and important electronic products, including the company's newest Resource Centers, plus classic GaleNet and InfoTrac databases. LIS programs and students will have access to a series of instructional modules designed to support and extend existing programs of bibliographic instruction. These modules provide tools and techniques that are relevant for instruction in the use of electronic databases.

Breakfast generously provided by the Gale Group

- **JELIS Editorial Board and Column Editors Meeting**
(by invitation) (California)

8:45–10:30 a.m.

South American AB

General Session III

“Reconsidering LIS Education: A View From the Field—Practitioners Speak to Educators, or What I Wish You Had Taught Me and Would Teach My New Hires”

- Deborah Abston (Arizona State): Librarians desiring to work in academic settings face a number of challenges when looking for their first positions. I have served on numerous search committees and served as both a formal and informal mentor to new librarians. I will share a few ideas on what new graduates may need to know in order to become successful information professionals.
- Molly E. Raphael (District of Columbia Public Library): After 30 years working in public libraries, I find that my formal education as a professional librarian is only a distant memory. How library educators can help shape new hires not only for entry-level positions but also for becoming effective library administrators is a topic of interest to us and to the future of libraries. The focus is on what library science areas are important in an urban public library as well as what additional knowledge, skills, and abilities are needed for success.”

- Christie Brandau (State Library of Michigan) presents the viewpoint of state and governmental libraries and discusses recommendations from the Public Library Association Committee on Recruitment of Public Librarians' report that have ramifications for LIS.

10:30–11:00 a.m.

Upper lobby

Break

11:00 a.m.–noon

South American AB

Annual Business Meeting

Presiding: James M. Matarazzo (Simmons)

12:15–1:30 p.m.

Pan American

Orientation Session

Board Lunch with 2001 SIG Convenors and Committee Chairs

12:15–3:00 p.m.

California

A Funny Thing Happened on the Way to the Old Folks Home: Retirement and Work

Host: Retirees SIG and F. William Summers (Florida State); panel includes Norman Horrocks (Scarecrow Press) and Brooke Sheldon (Arizona)

Abstract: Three recently retired LIS faculty discuss their decisions to continue working: one as a dean, one as an academic library director, and one as a part-time faculty member and editor. The program will cover retirement planning and lack thereof, boredom, continued enthusiasms, and how to leave the profession without being out of it.

2:00–3:00 p.m.

South American AB

ALA Office of Accreditation (OA) Meeting with **New** Deans, Directors, and Chairs

2:15–5:30 p.m.

New York

ALISE Board of Directors Meeting

3:00–4:00 p.m.

South American AB

ALA Office of Accreditation (OA) Meeting with **All** Deans, Directors, and Chairs

4:00–5:00 p.m.

California

ALA Committee on Accreditation (COA) Meeting with **All** Deans, Directors, and Chairs

4:00–5:30 p.m.

Massachusetts

SIG: Adjunct Faculty

Convenor: Ernest DiMattia (Ferguson Library, Stamford, CT)

5:30–6:30 p.m.

Federal B

Reception for Adjunct Faculty

DOCTORAL POSTERS

NAME/INSTITUTION	TITLE
June M. Abbas (North Texas)	Hunting with Artemis: A Preliminary Study of Student Use of Artemis Digital Library Project
Gwen Alexander (Arizona)	Hunting and Gathering: The WWW as a Facet of Information Access in Collection Development
Cynthia Barrancotto (Florida State)	THE CREATIVE ACADEMIC: Identification and Examination of the Eminent Academic
Joan C. Bartlett (Toronto)	Facilitating Access to and Use of Bioinformatics Resources
Laurie J. Bonnici (Florida State)	Expert Opinion as a Means of Identifying Potential Leaders: A Delphi Study with Enhanced Interaction for Respondents
Allen E. Brewer (Maryland)	Deterministic Inductive Logic: A multi-valued logic for reasoning about categories
Robert F. Carey (Western Ontario)	Rhetoric and Knowledge Construction
Donna C. Chan (Toronto)	Maintaining Professional Competence: Impact of Organizational and Individual Factors on the Updating Activities of Public Reference Librarians
Mary Cissell (Texas Woman's)	Differability as Diversity: An Analysis of the Portrayal of Characters with "Disabilities" in Contemporary Realistic Fiction for Children
Catherine Collins (Indiana)	Information Flow, Organizational Culture, and Salmon Recovery in the Pacific Northwest
Karen F. Gracey (UCLA)	The Imperative to Preserve: Competing Definitions of Value in the World of Film Preservation
Boyd Holmes (Western Ontario)	The Domain of Information Science, with an Emphasis on Contributing Disciplines: 1973 to 1998
Wooseob Jeong (Florida State)	What the heck is "haptic?"—multimodal display in geographic information systems
Steve Joyce (Western Ontario)	The Creation of Bent Knowledge: How Lesbian, Gay, and Bisexual (LGB) Youth Negotiate and Reconfigure Homophobic and Heterosexist Discourse
Boryung Ju (Florida State)	Assessing usability of menu-driven interfaces: The user-process model approach
Michelle Kazmer (Illinois)	Disengaging from Social Worlds: Distance Students Preparing to Graduate
Jinmook Kim (Maryland)	Concept maps as an aid in problem clarification and query formulation
Melanie A. Kimball (Illinois)	Picturing Wonderland: Alice's Illustrators Reflect Perceptions of Childhood, 1865–2000
Anita Komlodi (Maryland)	Search Histories for User Support in Information Systems
Sharyn J. Ladner (Florida State)	Career Narratives of High-Tech Women Librarians: A Feminist/Critical Analysis
Jee Yeon Lee (Syracuse)	An Investigation of Access Modes for Retrieving Emotional Content of Pictures
Jeong-Mee Lee (Florida State)	Metadata
Maureen L. Mackenzie (Long Island)	Information Accumulation and Managerial Decision Making
Emily Marsh (Maryland)	Rhetorical Relationships Between Images and Text in Web Pages
Christine Marton (Toronto)	(no title)
Pamela J. McKenzie (Western Ontario)	A discursive approach to considering authoritative knowledge within an information-seeking context
Shawne Miksa (Florida State)	Coding for Interactivity: an examination of the coding scheme used in a content analysis of online classroom log files
Miguel Angel Morales-Arroyo (North Texas)	Physiology of collaboration—an experience in nonprofit organizations, museums, libraries, and universities
Scott Nicholson (no institution)	Creating a criterion-based information agent through data mining for automated identification of scholarly research on the World Wide Web
Billie B. Oakes (Florida State)	The Personal Papers of Paul A. M. Dirac: Their History and Preservation at the Florida State University
Bradley L. Taylor (Michigan)	The Effect of Surrogation on Viewer Response to Expressional Qualities in Works of Art
Teresa Smith Walsh (Tennessee–Knoxville)	Citation Analyses of Telemedicine Authors and Journal Articles: Examples of Lotka's Law and Bradford's Law
Ruth Sawyer Woo (Florida State)	An Information Behavior Study: Attributes of Older Adults with an Optimistic Outlook
Lisl Zach (Maryland)	When is "enough" enough? An investigation of the information-seeking and -stopping behavior of decision maker
Dangzhi Zhao (Florida State)	Citation analysis of Web publications: a solution to problems in citation analysis studies introduced by ISI databases? A case study on the research area of XML

CONFERENCE PARTICIPANTS

A

Ismail Abdullahi (Clark–Atlanta)
Deborah Abston (Arizona State)
John Agada (Emporia)
Bryce Allen (Missouri)

B

Mary Alice Baish (AALL)
Deborah Barreau (Catholic)
Jeanette Bastian (Simmons)
Marcia J. Bates (UCLA)
John C. Bertot (Florida State)
Michele Besant (Florida State)
Laurie Bonnici (Florida State)
Christie Brandau (State Library of Michigan)
Carolyn Breedlove (National Educational Association)
Malore Brown (Wisconsin–Milwaukee)
Chris Brown-Syed (Wayne)
Bertram C. Bruce (Illinois)
Harry Bruce (Washington)
Elizabeth Buchanan (Wisconsin–Milwaukee)
Kathleen Burnett (Florida State)

C

James Carey (South Florida)
Elfreda A. Chatman (Florida State)
Hsin-liang Chen (Texas–Austin)
Clara M. Chu (UCLA)
Mary Cissell (Texas Woman's)
G. Wayne Clough, (Georgia Institute of Technology)
Colleen Cool (Queens)
Lisa M. Covi (Rutgers)
Richard J. Cox (Pittsburgh)

D

Marija Dalbello (Rutgers)
Evelyn H. Daniel (North Carolina–Chapel Hill)
Susan E. Davis (Wisconsin–Madison)
George D'Elia (Buffalo)
Ernest DiMattia (Ferguson Library, CT)
Carol Doll (Wayne)
Mirah Dow (Emporia)
J. Stephen Downie (Illinois)

E

Sue Easun (Scarecrow Press)
Michael Eisenberg (Washington)
Phillip B. Eppard (Albany)
Sanda Erdelez (Texas–Austin)
Linda Esser (Missouri)
Leigh Estabrook (Illinois)

F

Don Fallis (Arizona)
Lesley Farmer (UC–Long Beach)
Shirley Fitzgibbons (Indiana)
Schubert Foo (Nanyang Technological, Singapore)
Martin Fricke (Arizona)
Thomas J. Froehlich (Kent)

G

Joan Giglierano (OCLC)
Jack Glazier (Emporia)
Robert Grover (Emporia)

H

Roma Harris (Western Ontario)
Charles Hildreth (Long Island)
Susan E. Higgins (Nanyang Technological, Singapore)
Sharon A. Hogan (Illinois–Chicago)
Norman Horrocks (Scarecrow Press)
Ingrid Hsieh-ye (Catholic)

J

Thomas L. Jacobson (Buffalo)
Renee Jefferson (South Carolina)
Woo-seob Jeong (Florida State)
Corinne Jorgensen (Buffalo)

K

Abulfazal Kabir (Clark–Atlanta)
Michelle Kazmer (Illinois)
Christopher Khoo (Nanyang Technological, Singapore)
Kyung-Sun Kim (Missouri)
Melanie Kimball (Illinois)
Wallace Koehler (Oklahoma)
Johan Koren (Dominican)

L

Sarai Lastra (Illinois)
Don Latham (Florida State)
Sey-Peng Lim (Nanyang Technological, Singapore)

M

Stephanie Maatta (Florida State)
Cheryl Knott Malone (Illinois)
Tanya Marshall (Maryland)
Susan K. Martin (Georgetown)
James M. Matarazzo (Simmons)
Charles R. McClure (Florida State)
Howard McGinn (Black Caucus, ALA)
Claire McInerney (Rutgers)
Cindy Mediavilla (UCLA)
Joseph J. Mika (Wayne)
Joi Moore (Missouri)
Priscilla Coit Murphy (North Carolina–Chapel Hill)

N

James G. Neal (Johns Hopkins)
Kirsti Nelson (Western Ontario)
Delia Neuman (Maryland)
Terry Noreault (OCLC)
Donald M. Norris, (Strategic Initiatives, Inc.)

O

Dan O. O'Connor (Rutgers)
Larry Osborne (Hawaii)

P

Virginia Papandrea (Wayne)

Soyeon Park (Rutgers)
Christine Pawley (Iowa)
Ellen Perlow (Texas Woman's)
Anna Perrault (South Florida)
Lorna Peterson (Buffalo)
Sydney Pierce (Catholic)
Ron Powell (Wayne)
Ann Prentice (Maryland)

Q

Luz M. Quiroga (Hawaii)

R

Molly E. Raphael (D.C. Public Library)
Greg Reese (Black Caucus, ALA)
Jane Robbins (Florida State)
Louise S. Robbins (Wisconsin–Madison)
Jennifer Robins (Illinois)
Judith Robinson (Buffalo)
Eleanor Jo Rodger (Urban Libraries Council)

S

Donald J. Sager (Highsmith)
Cecilia Salvatore (Emporia)
Roberta Shaffer (Texas–Austin)
R.N. Sharma (West Virginia State)
Emily Sheketoff (ALA)
Brooke Sheldon (Arizona)
Eino Sierpe (Southern Connecticut)
Timothy W. Sineath (Kentucky)
Linda Smith (Illinois)
Diane H. Sonnenwald (North Carolina–Chapel Hill)
F. William Summers (Florida State)

T

Julie Tallman (Georgia)
Arlene Taylor (Pittsburgh)
Nancy Thomas (Emporia)
Samuel Trosow (UCLA)
Betty Turock (Rutgers)

V

Kay Vandergrift (Rutgers)

W

Danny P. Wallace (Oklahoma)
Diane Walster (Wayne)
Peiling Wang (Tennessee)
Shelly Warwick (Queens)
Judith Weedman (San Jose)
Andrew B. Wertheimer (Wisconsin–Madison)
Barbara M. Wildemuth (North Carolina–Chapel Hill)
Margaret Ann Wilkinson (Western Ontario)
Patricia Willard (New South Wales)
Concepcion S. Wilson (New South Wales)
Joseph Woelfel (Buffalo)
Dietmar Wolfram (Wisconsin–Milwaukee)
Blanche Woolls (San Jose State)

X

Hong Xie (Wisconsin–Milwaukee)
Hong Xu (Pittsburgh)

2000 ALISE ANNUAL BUSINESS MEETING MINUTES

FRIDAY, JANUARY 14, 2000

1. President Shirley Fitzgibbons called the meeting to order at 11:50 a.m., a quorum having been established.
2. **Rules of Order:** *Rules for ALISE Annual Business Meeting* adopted. President Fitzgibbons introduced the parliamentarian, Norman Horrocks.
3. The **agenda** was adopted as proposed.
4. **Approval of Minutes** of January 29, 1999, Annual Business Meeting. Adopted as recorded.
5. **Matters arising** (Shirley Fitzgibbons, president): No matters arising.
6. **Financial Report** (Lynne Howarth, secretary-treasurer): The Statement of Financial Position as of June 30, 1999, was distributed to the membership. The secretary-treasurer commented that the statement reflects the Board's commitments to (1) continuing to build the financial base of the association, and (2) enhancing membership services through, for example, additional support for research and other awards. Hearing no questions, the report was filed as read.
7. **President's Report** (Shirley Fitzgibbons): The president spoke to her report. President Fitzgibbons also welcomed international guests Tom Wilson (England), Taghreed Alqudsi-Ghabra (Kuwait), Elizabeth Davenport (Scotland), Ole Harbe (Denmark), Leif Kajberg (Denmark), Susan Higgins (Singapore), Patricia Milne (Australia), and Belle Alderman (Australia); association representatives Mary Ghikas (ALA), Lorelle Swader (MLA), Martha Brown (AALS), and Carla Funk (MLA); and new international affiliate members: the St. Petersburg State Academy of Culture and the MGIK, both of Russia.

President Fitzgibbons acknowledged, with deep appreciation, the partner organizations that support ALISE. Their support makes possible the creation of a conference that is affordable for a wide range of participants. These sponsors include Factiva, a Dow Jones & Reuters Company (for support of the all-conference reception); LEXIS-NEXIS (for underwriting the Awards Luncheon); the W.K. Kellogg Foundation (for support of the KALIPER Showcase and KALIPER program); OCLC (for partnership in the OCLC/ALISE Library and Information Science Research Grants); Libraries Unlimited (for support of the Early-Bird Reception); Morgan Kaufman (for special awards for the Doctoral Poster Award winners); and Scarecrow Press (for general conference support).
8. **Proposed Bylaws Change:** J. Matarazzo moved the following bylaws amendment for approval (additional text appears in **bold**):

Article III: Board of Directors
Section 6. There shall be an Executive Committee of the Board, to consist of the President, President-elect, **Secretary-Treasurer**, and the most recent Past President, with all the powers of the Board to act between meetings of the Board.

Rationale: The ALISE Board of Directors recommends the addition of the secretary-treasurer to the Executive Committee of the association in order to appropriately reflect financial information about the association in any possible actions that might be taken by the Executive Committee of the Board of Directors. This will bring the bylaws into conformity with earlier statements of the bylaws (IV, Section 1). The motion was approved unanimously. The proposed bylaws change will be submitted to a vote of the personal members of ALISE.
9. President Fitzgibbons asked members to observe a moment of silence in memory of faculty from member schools and programs who had passed away in the past year. Recognition was extended to Caroline Arden (Catholic), Barbara Bartley (Wisconsin-Milwaukee), Margaret Chisholm (Washington), Jack Alden Clarke (Wisconsin-Madison), Margaret Glazier (Wayne), Belver C. Griffith (Drexel), Ira Whitney Harris (Hawaii), John Miller (Dalhousie), Frederic J. Mosher (Berkeley), Barbara Patton (Dalhousie), George Piternick (British Columbia), and Pamela Richards (Rutgers).
10. **Executive Director's Report** (Sharon J. Rogers): The executive director spoke to her report.
11. **Committee Reports** (Shirley Fitzgibbons, president):
 - a. **Tellers Committee:** President Fitzgibbons invited Sibyl Moses, chair of the Tellers Committee, to officially report the results of the 1999 election. Results were as follows:

Vice president and President-elect: Pru Dalrymple (Dominican); **Secretary-Treasurer: Pat Feehan** (South Carolina); and **Director (1st year): Ann Curry** (British Columbia).
 - b. **Government Relations Committee:** On behalf of Betty Turrock, chair of the Government Relations Committee, Samuel Trosow presented a report. In addition to proposing a program, "ALISE Meets the 107th Congress," at the ALISE 2001 Conference in Washington, D.C., the committee plans to become more active in the Library Legislative Coalition, to post fact sheets about particular

issues with links to additional resources on the ALISE Web site, and to maintain a network of contacts for each school. B. Turrock will be posting a message on JESSE requesting that each ALISE member school designate one contact to be a member of a Government Relations Assembly for keeping the membership informed about current issues of interest to the field.

S. Trosow introduced Emily Sheketoff, executive director of the ALA Washington Office, who reported that she is focusing on outreach to the ALA membership and other member-based organizations, such as ALISE.

President Fitzgibbons noted that other committee reports had been submitted to the Board, thanked all committee chairs and members for their input throughout the past year, and asked if there were any questions regarding the work of any ALISE committees. None were forthcoming.

12. New Business (Shirley Fitzgibbons, president):

- a. President Fitzgibbons was informed by the chair of the Organization, Bylaws, and Resolutions Committee that there were no resolutions to present to the Annual Business Meeting.
- b. President Fitzgibbons noted that the conference in 2001 will be held in Washington, D.C. Joe Mika (Wayne) will chair the Conference Program Planning Committee.
- c. Members were directed to the current version of the ALISE Strategic Plan, which was distributed in the confer-

ence packets and appears on the ALISE Web site. President Fitzgibbons noted that while primary responsibility for strategic planning for ALISE rests with the Board, committees and other units of the association must ultimately engage in the directions proposed. It is important, therefore, to have feedback from committees and other units of the association on the strategies. As the Board reviews post-conference report forms, another round of strategic planning will begin for the year.

d. President Fitzgibbons acknowledged, with thanks, the service of three members of the ALISE Board who are completing their terms on the Board. She presented Past-President Toni Carbo (Pittsburgh), Secretary-Treasurer Lynne Howarth (Toronto), and Director (3rd year) Carol Kuhlthau a token of the association's appreciation.

13. Induction of the new ALISE President: President Fitzgibbons presented the association gavel to Jim Matarazzo and welcomed him as new ALISE president. President Matarazzo thanked Past-President Fitzgibbons for her outstanding service to the association and, particularly, for serving as president for two years. The membership acknowledged her contribution to ALISE with a standing ovation.

14. There being no other new business, the meeting was adjourned at 12:50 p.m.

“CHANGES IN LIS EDUCATION” BIBLIOGRAPHY

Bernie Sloan, senior library information systems consultant, University of Illinois Office for Planning and Budgeting (bernies@uillinois.edu), is putting together a bibliography titled “Changes in LIS Education.” According to Sloan, this bibliography is an attempt to gather relevant literature related to changes in LIS education over the past fifteen years or so for North American schools accredited by the American Library Association. It contains entries that treat the topic from the perspectives of both practitioner and educator. Currently, there are about 125 entries in the bibliography, with about three dozen available online: <http://www.lis.uiuc.edu/~b-sloan/edbib.html>.

This bibliography is very much a work in progress. Sloan has not yet reviewed every entry to determine its applicability, and new entries will be added and existing entries may be dropped if they are not directly applicable and as he tightens the focus of his research.

FINANCIAL REPORT

ALISE STATEMENT OF FINANCIAL POSITION AS OF JUNE 30, 2000

	June 30	
	2000	1999
ASSETS		
Current Assets		
Checking/Savings		
Alliance Bank Checking	\$20,000	\$0
SunTrust Checking	\$3,751	\$4,891
SunTrust Money Market Savings	\$33,801	\$17,973
Total Checking/Savings	<u>\$57,552</u>	<u>\$22,864</u>
Accounts Receivable		
Accounts Receivable	\$4,845	\$8,039
Total Accounts Receivable	<u>\$4,845</u>	<u>\$8,039</u>
Other Current Assets		
SunTrust Investments	\$169,105	\$167,749
Certificates of Deposit	\$1,625	\$2,531
Accrued Interest Receivable	\$0	\$40
Grants Receivable	\$0	\$24,000
Prepaid Expenses	\$5,000	\$7,324
Total Other Current Assets	<u>\$175,730</u>	<u>\$201,644</u>
Total Current Assets	<u>\$238,127</u>	<u>\$232,547</u>
Total Assets	<u>\$238,127</u>	<u>\$232,547</u>
LIABILITIES AND EQUITY		
Liabilities		
Current Liabilities		
Accounts Payable	\$416	\$0
Deferred Revenue—Member Dues	\$180	\$0
Deferred Revenue—JELIS	\$17,733	\$18,454
Total Current Liabilities	<u>\$18,329</u>	<u>\$18,454</u>
Total Liabilities	<u>\$18,329</u>	<u>\$18,454</u>
Equity		
Equity—Unrestricted	\$164,735	\$199,395
Net Income	\$27,790	\$7,219
Unrealized Gains/ (Losses)	\$0	(\$1,546)
Equity—Restricted	\$27,273	\$9,025
Total Equity	<u>\$219,798</u>	<u>\$214,093</u>
Total Liabilities and Equity	<u>\$238,127</u>	<u>\$232,547</u>

ALISE STRATEGIC PLAN

Time Frame for Goals and Objectives: 2000/2001–2001/2002.
Strategies are reviewed annually by committees and the Board of Directors.

Note: Assignments to ALISE committees are made for their review and assessment of the strategies.

Mission

The mission of this association shall be to promote excellence in research, teaching, and service for library and information science education.

Key Assumptions

1. Library and information science as a field is growing and maturing. Schools are developing niches and creating new partnerships.
2. Library and information science is grounded in higher education, which is also displaying growing complexity and stress from competing political, social, and economic demands.
3. Long-term societal trends—such as demographic changes, globalization of communication and commerce, technology developments and the inequality of technology access—will continue to shape evolution and change in both higher education and library and information science.
4. ALISE must be economically viable and must be perceived as vital and relevant to the member individuals and institutions.
5. At this time, the major building blocks for achieving the goals of ALISE are an annual conference, a scholarly journal, an annual statistical report, and other communication.
6. The activities of ALISE should address critical societal issues related to its mission and should evolve from a strategic planning process.

Goals and Objectives

GOAL 1: Promote an understanding of the values and ethos of library and information science.

Objective 1: Promulgate values in all association activities.

Objective 2: Formulate and promote policy positions on matters related to library and information science education. (Governmental Relations Committee)

Strategies:

- Review, eliminate, revise (Wallace), publicize existing position statements and disseminate through the Web site. (Rogers)
- Identify additional areas where policy statements are needed. (Board)

Objective 3: Continue to promote diversity in library and information science education.

Strategies:

- Work with the Multicultural, Ethnic and Humanistic Concerns, and International SIGs to incorporate programs on these issues at the conference. (Matarazzo and Dalrymple)

- Invite the *JELIS* co-editors and the *JELIS* Editorial Board to suggest strategies for promoting diversity. (*JELIS* Co-editors, *JELIS* Editorial Board)
- Work with the Association of Research Libraries (ARL) and other organizations to present sessions on diversity at each other's meetings. (Dalrymple)
- Work closely with ALA on the Spectrum Initiative and Century Scholarships. (Recruitment Committee)
- Work with ALA/OLPR, ARL, ACRL, ASIS, The Black Caucus, Reforma, and similar agencies to market LIS programs to underrepresented groups. (Recruitment Committee)
- Work with appropriate organizations (IMLS, NCLIS) for continued support for affirmative programs to double the number of persons from minority groups in LIS in 10 years. (Recruitment Committee)
- Compile a summary of activities of LIS schools/programs to recruit and retain minority students. (Rogers) See *Web site*.
- Pursue ALISE representation on Spectrum Advisory Committee to achieve better linkage between Spectrum calendar and school/program enhancement of Spectrum funding (Recruitment Committee, Rogers)

GOAL 2: Support the professional and intellectual growth of individual members.

Objective 1: Promote excellence and innovation in teaching and learning.

Strategies:

- Collaborate with sections of allied associations that are devoted to educational issues or concerns. (President, President-elect)
- Encourage ALISE Teaching Methods SIG to approach allied associations to identify their instructional services.
- Continue to promote the ALISE Teaching Excellence, Pratt-Severn Award for Faculty Innovation, and other teaching awards. (Teaching Methods SIG, Awards Committee, Rogers)

Objective 2: Provide faculty and doctoral students development opportunities.

Strategies:

- Continue to offer a formal mentoring program for doctoral students and first-year faculty members. (Recruitment Committee, New Faculty SIG, Doctoral SIG, Conference Program Planning Committee) See *2001 Conference Program*.
- Invite New Faculty SIG, Doctoral SIG, and Recruitment Committee to propose ways in which the association can provide ongoing means to help early-career faculty members to be successful. (New Faculty SIG, Doctoral SIG, Recruitment Committee)
- Continue to appoint doctoral students to ALISE committees. (President-elect)

- Appoint new faculty to ALISE committees. (President-elect)

GOAL 3: Advance research that contributes to and enlarges the knowledge base of library and information science and education in the field.

Objective 1: Improve the funding base for research in the field of library and information science.

Strategies:

- Develop strategies for obtaining research support and writing proposals. (Conference Program Planning Committee, Research SIG, Research Committee)
- Develop, organize, and prioritize a plan for contacting potential donors and obtain funding to cover existing research awards. (Ad Hoc Committee on Revenue Enhancement)
- Develop a plan to broaden funding sources. (Ad Hoc Committee on Revenue Enhancement, President-elect, Governmental Relations Committee)
- Establish channels of communication with potential funding sources.

Objective 2: Create and implement additional vehicles for sharing research.

Strategies:

- Continue to include a conference session focused on research from related fields. (Research SIG, Conference Program Planning Committee)
- Continue to put abstracts of juried conference papers and research papers on the Web site six (6) weeks in advance of the annual conference. (Conference Program Planning Committee, Rogers)
- Encourage discussion on JESSE and other listservs of juried conference papers in advance of and following the conference. (Doctoral SIG)
- Work with liaisons to other organizations to arrange sessions at the other associations on research issues of common interest. (President, President-elect, liaisons) *See 2001 Conference Program—reception for liaisons.*
- Invite the *JELIS* co-editors and the *JELIS* Advisory Committee to suggest strategies for achieving this objective. (*JELIS* co-editors, *JELIS* Advisory Committee)
- Place abstracts of doctoral student posters on the ALISE Web site in advance of each conference. (Doctoral SIG, Rogers)

Objective 3: Expand opportunities to promote recognizing excellence in research.

Strategies:

- Create enhanced promotional materials (including photographs, personal biographical information) to recognize ALISE research awards winners in journals, newsletters, and other communications. (Feehan)

GOAL 4: Provide mechanisms for the exchange, dissemination, and receipt of information about issues, events, and trends in such areas as curriculum, research, funding, consulting, continuing education, government, and society as these influence and inform library and information science.

Objective 1: Provide opportunities to focus on and exchange information about issues, innovations, and trends of importance to the education of library information professionals.

Strategies:

- Organize conference sessions to share strategies, models, management, and operational information among the members. (Council of Deans, Directors, and Program Chairs; SIGs; Conference Program Planning Committee)
- Strengthen the system of liaisons to/from organizations by reporting and meeting with the ALISE Board annually. (Liaisons, President-elect)

Objective 2: Ensure quality, timeliness, and profitability of all publications.

Strategies:

- Thoroughly review all of the ALISE publications and develop a plan to improve efficiency and effectiveness. (Publications Committee, Feehan)
- Promote the awareness and use of links from the schools' pages to the ALISE Web site. (School representatives, Rogers)
- Assess the database format of the Directory (Publications Committee, Feehan)

Objective 3: Interact effectively with other information organizations.

Strategies:

- Sponsor cooperative programs with library, information, and education organizations. (President, President-elect)
- Review the list of those library, information, and education organizations with which we have established affiliation; add, drop, revise, as necessary. (President, President-elect)

Objective 4: Create materials to promote ALISE.

Strategies:

- Develop new personal and institutional membership brochures. (Rogers)
- Disseminate press releases. (Feehan, association management)

GOAL 5: Strengthen the association's leadership role in library and information science education.

Objective 1: Improve the effectiveness of the organizational structure of ALISE. (Executive Committee)

Strategies:

- Review committee structure and make recommendations for change. (President-elect, Executive Committee)
- Spring 2001 meeting. Review liaison roles and responsibilities of directors and officers on the Board and distribute workload evenly. (Executive Committee)

Objective 2: Encourage wider participation from LIS programs.

Strategies:

- Annually monitor membership retention and develop and implement a plan to respond to results. (Membership, Secretary-Treasurer, Executive Director)
- Increase membership by 25 members each year. (Membership Committee, Executive Director)
- Recruit five (5) affiliate institutional members. (Rogers)

Objective 3: Encourage wider participation from related fields.

Strategies:

- Attract to ALISE membership individuals from cognate disciplines and professions. (Membership Committee, liaisons, Conference Program Planning Committee)

Objective 4: Encourage partnerships to recruit students to library and information science professions.

Strategies:

- Work with ACRL and other professional associations as appropriate to develop strategies, programs, and recruitment materials (Liaisons, Recruitment Committee)

- Link ALISE Web site to ALA's Office of Library Personnel Resources so promotional materials are easily available to Schools/Programs. (Rogers)
- Work with liaisons to create strategies for promoting the library and information science profession. (Liaisons, President, President-elect)



BYLAWS

The following bylaws changes are being proposed (changes highlighted in **bold**):

1. In order to provide a process for SIG dissolution, our committee proposes that Section 1 of Article VIII be altered to read: "Interest groups may be established **and disestablished** by the board to respond to special and unique membership concerns.
2. Since the Deans would like the opportunity to send a proxy to the Dean's Council, our committee proposes that Article VII, Section 2, be altered to read: "The Council shall consist of the chief executive officer of each individual Institutional Member School, **or a proxy appointed by the chief executive officer.**"
3. To clarify membership categories, our committee

proposes that Article II, Section 1, be altered to read: "Membership in the Association shall consist of: Personal Members, Institutional Members, **Associate Institutional Members**, and International Affiliate Members"

4. To clarify whether non-ALISE members may serve on committees, our committee proposes that the following sentence be added to the end of Article VI, Section 1: "**Members of Standing and Special Committees shall be personal members of ALISE. However, as appropriate, the president is empowered to waive this requirement to advance organizational objectives. All such waivers shall be reported to the Board of Directors.**" This addition would allow the Board to appoint non-ALISE members to draw on particular expertise, if needed.

—Submitted by Heidi Julien (Dalhousie)

2001 ALISE ANNUAL CONFERENCE AT A GLANCE

	WEDNESDAY	THURSDAY	FRIDAY
	<p>8:00 a.m.–6:00 p.m. Registration</p> <p>8:00 a.m.–10:00 p.m. Placement Services</p> <p>7:30–8:45 a.m. First-timer's Orientation and Breakfast</p> <p>9:00–10:15 a.m. General Session I: Predictions for Graduate Education Beyond 2000 South American AB</p> <p>10:15–10:45 a.m. Break</p> <p>10:45 a.m.–noon Juried Papers I: Recent Trends in LIS Education</p> <p>noon–1:30 p.m. • Lunch on your own—colleague networking • LISDEC</p> <p>noon–1:15 p.m. ALISE School Rep./Board Lunch Congressional</p> <p>1:30–3:00 p.m. Concurrent Sessions:</p> <ul style="list-style-type: none"> • SIC: Technical Services California • SIC: Research Methods Ohio • SIC: New Faculty Massachusetts • Database Searching Federal A <p>3:00–4:00 p.m. Networking Break/Exhibitors Showcase—Posters: Undergrad. Programs in LIS/ Discussions Upper lobby</p> <p>4:00–5:30 p.m. Juried Papers II: Teaching: New Models and Technologies South American AB</p> <p>5:30–6:30 p.m. Liaisons to Other Organizations and ALISE Board Reception Senate</p> <p>5:30–7:00 p.m. Dine-around with ALISE Host South American AB</p> <p>7:00–8:00 p.m. Research Award Presentations South American AB</p> <p>8:00–9:15 p.m. Concurrent Sessions:</p> <ul style="list-style-type: none"> • SIC: Assoc. Deans/Directors Massachusetts • SIC: Distance Education Pan American • SIC: Gender Issues Senate • SIC: Curriculum Ohio <p>8:00–10:30 p.m. Doctoral Students' Poster Setup/Session/Reception Presidential</p> <p>10:00–11:00 p.m. ALISE Suite: open</p>	<p>8:00 a.m.–6:00 p.m. Registration</p> <p>8:00 a.m.–10:00 p.m. Placement Services</p> <p>7:30–9:00 a.m. ALISE Committees II Federal AB</p> <p>9:00–10:15 a.m. Concurrent Sessions:</p> <ul style="list-style-type: none"> • Juried Papers III: LIS Education and the Users of Information South American AB • ALA Task Force on External Accreditation California <p>10:15–10:45 a.m. Break Upper lobby</p> <p>10:45 a.m.–noon Concurrent Sessions:</p> <ul style="list-style-type: none"> • SIC: Multicult./Int'l. Lib. Part I Massachusetts • SIC: Doctoral Students California • SIC: Archives and Preservation Ohio • SIC: Continuing Education Pan American • Collaborate to Innovate South American A <p>noon–1:30 p.m. Awards Luncheon Federal AB</p> <p>1:30–3:00 p.m. Concurrent Sessions:</p> <ul style="list-style-type: none"> • Juried Papers IV: Core Values in LIS South American B • Council of Deans, Directors, and Program Chairs California • SIC: Multicult./Int'l. Lib. Part II South Amer. A <p>3:00–4:00 p.m. Networking Break and Exhibitors Showcase—IMLS Grants Showcase/ Discussions Upper lobby</p> <p>4:00–5:30 p.m. General Session II: Reconsidering LIS Education South American AB</p> <p>5:30–6:30 p.m. Reception for Past Presidents and ALISE Board Reception New York</p> <p>5:30–7:00 p.m. Dine-around with ALISE Host South American AB</p> <p>7:00–9:00 p.m. Concurrent Sessions:</p> <ul style="list-style-type: none"> • Research Grant Awards Reports: 2000 & 2001 South American AB • SIC: Library History California • SIC: Teaching Methods Ohio • SIC: Youth Services Massachusetts • SIC: Multicultural Pan American <p>9:00–10:30 p.m. All-Conference Reception and Exhibitors Showcase Federal AB</p> <p>10:00–11:00 p.m. ALISE Suite: open</p>	<p>8:00 a.m.–noon Registration</p> <p>8:00 a.m.–5:00 p.m. Placement Services</p> <p>7:30–8:30 a.m. • Gale Group/Breakfast South American AB • JELIS Editorial Meeting California</p> <p>8:45–10:30 a.m. General Session III: Reconsidering LIS Education: A View From the Field South American AB</p> <p>10:30–11:00 a.m. Break Upper lobby</p> <p>11:00 a.m.–noon Annual Business Meeting South American AB</p> <p>12:15–1:30 p.m. Orientation Session/Board Lunch with 2001 SIG Convenors and Committee Chairs Pan American</p> <p>12:15–3:00 p.m. A Funny Thing Happened on the Way to the Old Folks Home California</p> <p>2:00–3:00 p.m. ALA OA Meeting with New Deans, Directors, and Chairs South American AB</p> <p>2:15–5:30 p.m. ALISE Board of Directors Meeting New York</p> <p>3:00–4:00 p.m. ALA OA Meeting with All Deans, Directors, and Chairs South American AB</p> <p>4:00–5:00 p.m. ALA COA Meeting with All Deans, Directors, and Chairs California</p> <p>4:00–5:30 p.m. SIG: Adjunct Faculty Massachusetts</p> <p>5:30–6:30 p.m. Reception for Adjunct Faculty Federal B</p>
<p>noon–7:00 p.m. Registration</p> <p>noon–6:00 p.m. Placement Services</p> <p>noon–5:00 p.m. ALISE Board of Directors Meeting Massachusetts</p> <p>Preconference Workshops:</p> <p>2:00–6:00 p.m. Successful Proposal Writing and Grantsmanship Congressional</p> <p>2:00–4:00 p.m. Legislative Advocacy and LIS Education Ohio</p> <p>4:00–6:00 p.m. • 7 Ways to CourseInfo Ohio • Preparing for Employment Interview Senate</p> <p>6:00–7:00 p.m. Early-Bird Reception South American AB</p> <p>7:00–9:00 p.m. ALISE Committee Meetings I Congressional</p> <p>9:00–10:30 p.m. ALISE Suite: open</p>			



ALISE is active
year 'round
at
www.alise.org

Mark your calendars
for the
2002 ALISE Annual Conference
in
New Orleans
January 15–18, 2002!

